

**RPA547Ra02 50µg**

**Recombinant Vascular Cell Adhesion Molecule 1 (VCAM1)**

**Organism Species: *Rattus norvegicus* (Rat)**

***Instruction manual***

FOR RESEARCH USE ONLY

NOT FOR USE IN CLINICAL DIAGNOSTIC PROCEDURES

---

12th Edition (Revised in Aug, 2016)

**[ PROPERTIES ]**

**Source:** Prokaryotic expression

**Host:** *E.coli*

**Residues:** Ala20~Thr682

**Tags:** N-terminal His Tag

**Subcellular Location:** Secreted

**Purity:** > 90%

**Traits:** Freeze-dried powder

**Buffer formulation:** 20mM Tris, 150mM NaCl, pH8.0, containing 0.01% SKL, 5% Trehalose.

**Original Concentration:** 100µg/mL

**Applications:** Positive Control; Immunogen; SDS-PAGE; WB.

(May be suitable for use in other assays to be determined by the end user.)

**Predicted isoelectric point:** 4.7

**Predicted Molecular Mass:** 76.5kDa

**Accurate Molecular Mass:** 77kDa as determined by SDS-PAGE reducing conditions.

**[ USAGE ]**

Reconstitute in ddH<sub>2</sub>O to a concentration of 0.1-1.0 mg/mL. Do not vortex.

**[ STORAGE AND STABILITY ]**

**Storage:** Avoid repeated freeze/thaw cycles.

Store at 2-8°C for one month.

Aliquot and store at -80°C for 12 months.

**Stability Test:** The thermal stability is described by the loss rate. The loss rate was determined by accelerated thermal degradation test, that is, incubate the protein at 37°C for 48h, and no obvious degradation and precipitation were observed. The loss rate is less than 5% within the expiration date under appropriate storage condition.

**[ SEQUENCE ]**

```

          A VSQAFKIEIS PEYKTLAQIG DSMLLTCSTT
GCESPSFSWR TQIDSPNGK VKTEGAKSVL TMDPVSFENE HSYLCTATCN
SGKLERGIQV DIYSFPKDPE IQFSGPLEVG KPVMVKCLAP DVYPIDRLEI
ELFKGDRLMK KQDFVDEMAK KSLETKSLEV IFTPVIEDIE KALVCRAKLY
IDQTD SIPKE  RETVRELQVY TSPKNTEISV HPSTRLHEGA AVTMTCASEG
LPAPEIFWSK KLDNGVLQLL SGNATLTLIA MRMEDSGIYV CEGVNLVGRD
KTEVELIVQE KPFTVDISPG SQVAAQVGDS VVLTCAAVGC DSPSFSWRTQ
TDSPLNGEVR DEGATSTLTL SPVGVEDEHS YLCTVTCQRR KLEKTIQVEV
YSFPEDPEIE ISGPLVHGRP VTVNCTVPMV YPFDHLEIEL LKGETTLLNK
FLREEIGTKS LETKSLEMTF IPTAEDTGKA LVCLAKLHSS QMESEPKQRQ
STQTLYVNVA PKEPTIWWSP SPVPEEGSPV NLTCSSDGFP TPKILWSRQL
KNGELQPLSQ NTTLSFMATK MEDSGIYVCE GINEAGISKK SVELIIQGSS
KDIQLTVFPS KSVKEGDTVI ISCTCGSVPE IWIIILKKKAK TGDMLKSVN
GSYTIRKAQL QDAGVYECES KTEVGSQLRS LT

```

**[ IDENTIFICATION ]**

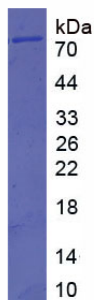


Figure. SDS-PAGE

**[ IMPORTANT NOTE ]**

The kit is designed for research use only, we will not be responsible for any issue if the kit was used in clinical diagnostic or any other procedures.