

**APB592Ra01 100µg**

**Active Caspase 1 (CASP1)**

**Organism Species: Rattus norvegicus (Rat)**

***Instruction manual***

FOR IN VITRO USE AND RESEARCH USE ONLY  
NOT FOR USE IN CLINICAL DIAGNOSTIC PROCEDURES

---

---

1st Edition (Apr, 2016)

## **[ PROPERTIES ]**

**Source:** Prokaryotic expression.

**Host:** *E. coli*

**Residues:** Asn119~Asp296

**Tags:** N-terminal His-tag

**Purity:** >95%

**Buffer Formulation:** 20mM Tris, 150mM NaCl, pH8.0, containing 0.05% sarcosyl and 5% trehalose.

**Applications:** Cell culture; Activity Assays.

(May be suitable for use in other assays to be determined by the end user.)

**Predicted isoelectric point:** 7.7

**Predicted Molecular Mass:** 21.2kDa

**Accurate Molecular Mass:** 21kDa as determined by SDS-PAGE reducing conditions.

## **[ USAGE ]**

Reconstitute in 20mM Tris, 150mM NaCl (pH8.0) to a concentration of 0.1-1.0 mg/mL. Do not vortex.

## **[ STORAGE AND STABILITY ]**

**Storage:** Avoid repeated freeze/thaw cycles.

Store at 2-8°C for one month.

Aliquot and store at -80°C for 12 months.

**Stability Test:** The thermal stability is described by the loss rate. The loss rate was determined by accelerated thermal degradation test, that is, incubate the protein at 37°C for 48h, and no obvious degradation and precipitation were observed. The loss rate is less than 5% within the expiration date under appropriate storage condition.

## **[ SEQUENCE ]**

NK EGGAFPGPSG SLKFCPLEIA QKLWKENHSE  
IYPIMKTPTR TRLALIICNT DFQHLRRVG ADVDLREMKL LLQDLGYTVK  
VKENLTALEM TKELKEFAAC PEHKTS DSTF LVFMSHGLQE GICGITYSNE  
VADILKVDTI FQMMNTLKCP SLKDKPKVII IQACRGEKQG VLLK D

## **[ ACTIVITY ]**

Caspase 1 (CASP1) cleaves IL-1 beta between an Asp and an Ala, releasing the mature cytokine which is involved in a variety of inflammatory processes. It also has lots of other function, such as defenses against pathogens, cleaves and activates sterol regulatory element binding proteins (SREBPs), promotes apoptosis. Besides, Interleukin 1 Alpha (IL1a) has been identified as an interactor of CASP1, thus a binding ELISA assay was conducted to detect the interaction of recombinant rat CASP1 and recombinant rat IL1a. Briefly, CASP1 were diluted serially in PBS, with 0.01% BSA (pH 7.4). Duplicate samples of 100uL were then transferred to IL1a-coated microtiter wells and incubated for 2h at 37°C. Wells were washed with PBST and incubated for 1h with anti-CASP1 pAb, then aspirated and washed 3 times. After incubation with HRP labelled secondary antibody, wells were aspirated and washed 3 times. With the addition of substrate solution, wells were incubated 15-25 minutes at 37°C. Finally, add 50µL stop solution to the wells and read at 450nm immediately. The binding activity of of CASP1 and IL1a was shown in Figure 1, and this effect was in a dose dependent manner.

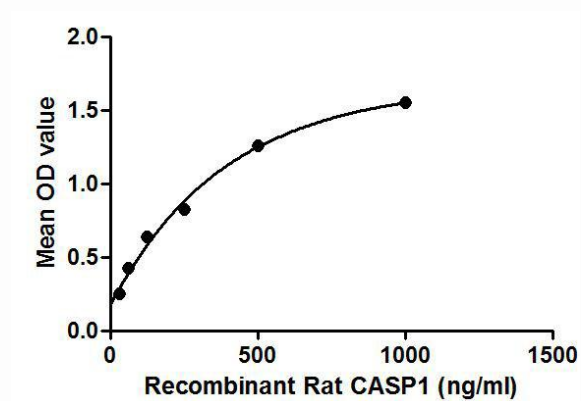


Figure 1. The binding activity of CASP1 with IL1a.

## [ IDENTIFICATION ]

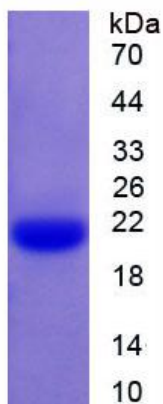
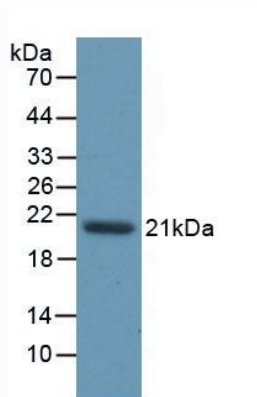


Figure 2. SDS-PAGE

Sample: Active recombinant CASP1, Rat



**Figure 3. Western Blot**

**Sample: Recombinant CASP1, Rat;**

**Antibody: Rabbit Anti-Rat CASP1 Ab (PAB592Ra01)**