



**CAB341Hu22**  
**Anti-Actin Alpha 1, Cardiac Muscle (ACTC1)**  
**Organism Species: Homo sapiens (Human)**  
*Instruction manual*

FOR IN VITRO USE AND RESEARCH USE ONLY  
NOT FOR USE IN CLINICAL DIAGNOSTIC PROCEDURES

---

---

12th Edition (Revised in Aug, 2016)

## **[ PROPERTIES ]**

**Source:** Monoclonal antibody preparation

**Host:** Mouse

**Purification:** Protein A/G Affinity Chromatography.

**Traits:** Liquid

**Concentration:** 500µg/mL

**UOM:** 100µg

**Applications:** Loading Control of WB.

## **[ IMMUNOGEN ]**

**Immunogen:** Recombinant ACTC1 (Asp156~Gly368) expressed in *E.coli*.

**Accession No.:** RPB341Hu01

## **[ ORGANISM SPECIES MORE ]**

**React with:** Human, mouse, rat, rabbit, gallus, canine, cavia, simian, porcine;  
Other species have not been detected.

## **[ APPLICATIONS ]**

Western blotting: 0.5-5µg/mL

Optimal working dilutions must be determined by end user.

## **[ FORMULATION ]**

**Form & Buffer:** Supplied as solution form in 0.01M PBS, pH7.4, containing 0.05% Proclin-300, 50% glycerol.

## **[ STORAGE AND STABILITY ]**

**Storage:** Avoid repeated freeze/thaw cycles.

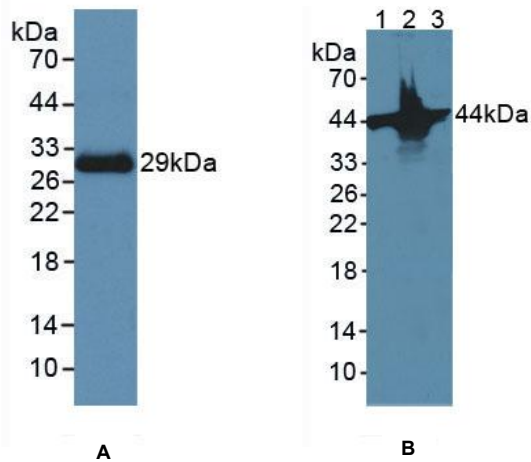
Store at 4°C for frequent use.

Aliquot and store at -20°C for 12 months.

**Stability Test:** The thermal stability is described by the loss rate. The loss rate was determined by accelerated thermal degradation test, that is, incubate the protein at 37°C for 48h, and no obvious degradation and precipitation were

observed. The loss rate is less than 5% within the expiration date under appropriate storage condition.

## [ IDENTIFICATION ]



**Figure 1. Western Blot**

**A. Sample: Recombinant ACTC1, Human**

**B. Lane1: Mouse Heart Tissue**

**Lane2: Mouse Skeletal Muscle Tissue**

**Lane3: Mouse Skin Tissue**

**Primary Ab: 3 $\mu$ g/mL Mouse Anti-Human ACTC1 Ab**

**Second Ab: 1:5000 Dilution of HRP-Linked Rabbit**

**Anti-Mouse IgG Ab (Catalog: SAA544Mu09)**