



CAB021Hu22

Anti-Catenin Beta 1 (CTNNb1) Monoclonal Antibody

Organism Species: *Homo sapiens* (Human)

Instruction manual

FOR IN VITRO USE AND RESEARCH USE ONLY
NOT FOR USE IN CLINICAL DIAGNOSTIC PROCEDURES

13th Edition (Revised in Aug, 2023)

[PROPERTIES]

Source: Monoclonal antibody preparation

Host: Mouse

Antibody isotype: IgG2b Kappa

Purification: Protein A+G Affinity Chromatography.

Clone number: C9

Traits: Liquid

Concentration: 1mg/mL

UOM: 100µL

Applications: WB; IHC

[IMMUNOGEN]

Immunogen: Recombinant CTNNb1 (Cys439~Ser675) expressed in *E.coli*.

Accession No.: RPB021Hu01

[ORGANISM SPECIES MORE]

React with: Mouse; Rat; Cavia; Rabbit; Canine; Porcine; Bovine; Gallus ; Fish

[APPLICATIONS]

Western blotting: 0.01-2µg/mL;

Immunohistochemistry: 5-20µg/mL;

Optimal working dilutions must be determined by end user.

[FORMULATION]

Form & Buffer: Supplied as solution form in 0.01M PBS, pH7.4, containing 0.02% NaN₃, 50% glycerol.

[STORAGE AND STABILITY]

Storage: Avoid repeated freeze/thaw cycles.

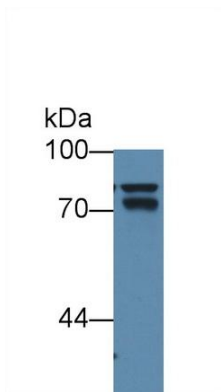
Store at 4°C for frequent use.

Aliquot and store at -20°C for 24 months.

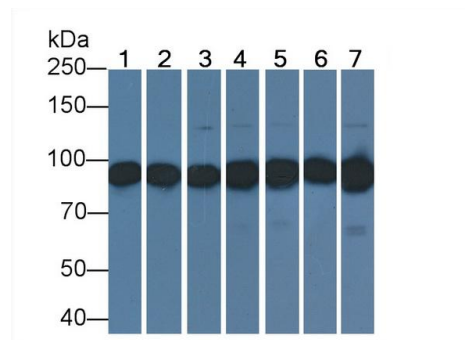
Stability Test: The thermal stability is described by the loss rate. The loss rate

was determined by accelerated thermal degradation test, that is, incubate the protein at 37°C for 48h, and no obvious degradation and precipitation were observed. The loss rate is less than 5% within the expiration date under appropriate storage condition.

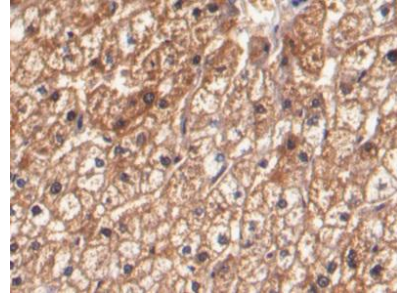
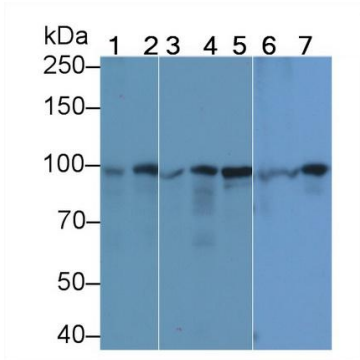
[IDENTIFICATION]



Western Blot; Sample: Mouse Lung lysate;
Primary Ab: 3µg/ml Mouse Anti-Human
CTNnb1 Antibody
Second Ab: 0.2µg/mL HRP-Linked Rabbit
Anti-Mouse IgG Polyclonal Antibody
(Catalog: SAA544Mu19)



Western Blot; Sample: Lane1: Mouse
Cerebrum lysate;
Lane2: Porcine Heart lysate;
Lane3: Rat Cerebrum lysate;
Lane4: Canine Heart lysate;
Lane5: Gallus Cerebrum lysate;
Lane6: Bovine Heart lysate;
Lane7: Rabbit Heart lysate
Second Ab: 0.2µg/mL HRP-Linked Rabbit
Anti-Mouse IgG Polyclonal Antibody
(Catalog: SAA544Mu19)



Western Blot; Sample:

Lane1: Porcine Heart lysate;
 Lane2: Porcine Cerebrum lysate;
 Lane3: Rat Cerebrum lysate;
 Lane4: Canine Heart lysate;
 Lane5: Canine Cerebrum lysate;
 Lane6: Canine Heart lysate;
 Lane7: Cavia Heart lysate;
 Lane8: Cavia Cerebrum lysate
 Primary Ab: 2 μ g/ml Mouse Anti-Human
 CTNNb1 Antibody
 Second Ab: 0.2 μ g/mL HRP-Linked Rabbit
 Anti-Mouse IgG Polyclonal Antibody
 (Catalog: SAA544Mu19)

DAB staining on IHC-P;
 Samples: Human Liver Tissue;
 Primary Ab: 20 μ g/ml Mouse
 Anti-Human CTNNb1 Antibody
 Second Ab: 2 μ g/mL HRP-Linked
 Caprine
 Anti-Mouse IgG Polyclonal
 Antibody
 (Catalog: SAA544Mu19)

[**Important Note**]

The kit is designed for in vitro and research use only, we will not be responsible for any issue if the kit was used in clinical diagnostic or any other procedures.