



CAB870Mi01
Anti-Tubulin Beta (TUBb) Polyclonal Antibody
Instruction manual

FOR RESEARCH USE ONLY
NOT FOR USE IN CLINICAL DIAGNOSTIC PROCEDURES

12th Edition (Revised in Aug, 2016)

[PROPERTIES]

Source: Polyclonal antibody preparation

Host: Rabbit

Purification: Antigen-specific Affinity Chromatography

Traits: Liquid

Concentration: 260µg/mL

UOM: 100µg(385µl)

Applications: Loading Control of WB.

[IMMUNOGEN]

Immunogen: Recombinant TUBb (Val170~Val419) expressed in *E.coli*.

Accession No.: RPB870Hu01

[ORGANISM SPECIES MORE]

React with: Human, mouse, rat, bovine, porcine;

Other species have not been detected.

[APPLICATIONS]

Western blotting: 1:130-500

Optimal working dilutions must be determined by end user.

[FORMULATION]

Form & Buffer: Supplied as solution form in 0.01M PBS, pH7.4, containing 0.05% Proclin-300, 50% glycerol.

[STORAGE AND STABILITY]

Storage: Avoid repeated freeze/thaw cycles.

Store at 4°C for frequent use.

Aliquot and store at -20°C for 12 months.

Stability Test: The thermal stability is described by the loss rate. The loss rate was determined by accelerated thermal degradation test, that is, incubate the protein at 37°C for 48h, and no obvious degradation and precipitation were

observed. The loss rate is less than 5% within the expiration date under appropriate storage condition.

[IDENTIFICATION]

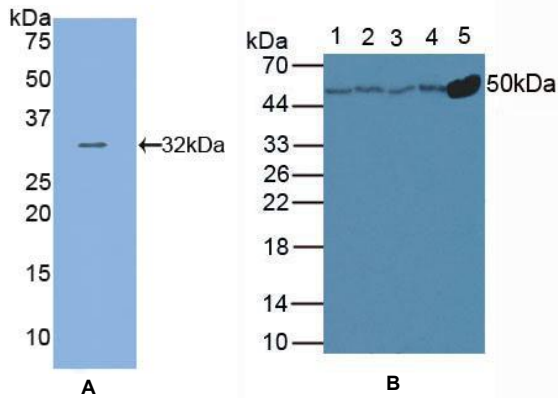


Figure 1. Western Blot

A. Sample: Recombinant TUBb, Human

B. Lane1: Rat Liver Tissue

Lane2: Rat Kidney Tissue

Lane3: Mouse Liver Tissue

Lane4: Mouse Kidney Tissue

Lane5: Mouse Brain Tissue

Primary Ab: 1:200 Dilution of Rabbit Anti- TUBb Ab

Second Ab: 1:2000 Dilution of HRP-Linked Guinea pig

Anti-Rabbit Ab (Catalog: SAA544Rb59)

[Important Note]

The kit is designed for in vitro and research use only, we will not be responsible for any issue if the kit was used in clinical diagnostic or any other procedures.