

PAC030Ca01

Polyclonal Antibody to Creatine Kinase, Brain (CKB)

Organism Species: *Canis familiaris*; Canine (Dog)

Instruction manual

FOR IN VITRO USE AND RESEARCH USE ONLY
NOT FOR USE IN CLINICAL DIAGNOSTIC PROCEDURES

9th Edition (Revised in Jul, 2013)

[PRODUCT INFORMATION]

Immunogen: CKB, Canine

Clonality: Polyclonal

Host: Rabbit

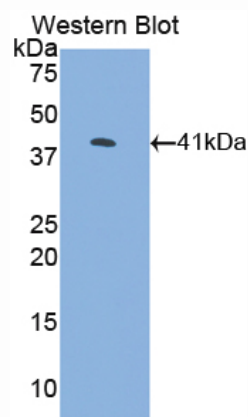
Immunoglobulin Type: IgG

Purification: Affinity Chromatography.

Applications: WB, ICC, IHC-P, IHC-F, ELISA

Concentration: 200µg/mL

UOM: 100µg



Sample: Recombinant CKB, Canine

[IMMUNOGEN INFORMATION]

Immunogen: Recombinant CKB (Lys11~Leu367) expressed in *E.coli*.

USCN Accession No.: RPC030Ca01

Sequence: The target protein is fused with N-terminal His-Tag and its sequence is listed below.

MGHHHHHSGS-KLRFPAEDEF PDLSAHNNHM AKVLTPELYA ELRAKSTPSG FTLLDDVIQGT
VDNPGHPYIM TVGCVAGDEE SYDVFKEKELFD PIIEDRHGGY KPSDEHKTDL NPDNLQGGDD
LDPNYVLSSR VRTGRSIRGF CLPPHCSRGE RRAIEKLAVE ALSSLDGDLA GRYYALKSMT
EAEQQQLIDD HFLFDKPVSP LLLASGMARD WPDARGIWHN DNKTFVLWIN EEDHLRVISM
QKGGNMKEVF TRFCNGLTQI ETLFKSKNYE FMWNPFLGYI LTCPSNLGTG LRAGVHIKLP
HLGKHEKFPE VLKRLRLQKR GTGGVDAAV GGVFDVSNAD RLGFSSEVELV QMVVDGVKLL
IEMEQRL

[ANTIBODY SPECIFICITY]

The antibody is a rabbit polyclonal antibody raised against CKB. It has been selected for its ability to recognize CKB in immunohistochemical staining and western blotting.

[APPLICATIONS]

Western blotting: 1:100-400

Immunocytochemistry in formalin fixed cells: 1:100-500

Immunohistochemistry in formalin fixed frozen section: 1:100-500

Immunohistochemistry in paraffin section: 1:50-200

Enzyme-linked Immunosorbent Assay: 1:100-200

Optimal working dilutions must be determined by end user.

[CONTENTS]

Form & Buffer: Supplied as solution form in PBS, pH7.4, containing 0.02% NaN_3 , 50% glycerol.

[QUALITY CONTROL]

Content: The quality control contains recombinant CKB (Lys11~Leu367) disposed in loading buffer.

Usage: 10uL per well when 3,3'-Diaminobenzidine(DAB) as the substrate.

5uL per well when used in enhanced chemiluminescent (ECL).

Note: The quality control is specifically manufactured as the positive control. Not used for other purposes.

Loading Buffer: 100mM Tris(pH8.8), 2% SDS, 200mM NaCl, 50% glycerol, BPB 0.01%, NaN_3 0.02%.

[STORAGE]

Store at 4°C for frequent use. Stored at -20°C to -80°C in a manual defrost freezer for one year without detectable loss of activity. Avoid repeated freeze-thaw cycles.