

PAB815Ra02

Polyclonal Antibody to Interleukin 6 Receptor(IL6R)

Organism Species: Rattus norvegicus (Rat)

Instruction manual

FOR IN VITRO USE AND RESEARCH USE ONLY

NOT FOR USE IN CLINICAL DIAGNOSTIC PROCEDURES

9th Edition (Revised in Jul, 2013)

[PRODUCT INFORMATION]

Immunogen: IL6R, Rat

Clonality: Polyclonal

Host: Rabbit

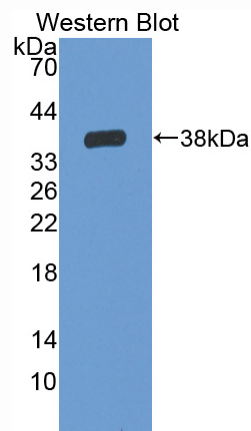
Immunoglobulin Type: IgG

Purification: Affinity Chromatography.

Applications: WB, ICC, IHC-P, IHC-F, ELISA

Concentration: 200µg/mL

UOM: 100µg



Sample: Recombinant IL6R, Rat

[IMMUNOGEN INFORMATION]

Immunogen: Recombinant IL6R (Ala19~Ala348) expressed in *E.coli*.

Accession No.: RPB815Ra02

Sequence: The target protein is fused with N-terminal His-Tag and its sequence is listed below.

MGHHHHHHSGSEF- AL VLGSCRALEV ANGTVTSLPG ATVTLICPGK EAAGNATIH
WYSGSQSREW TTTGNTLVLR AVQVNDTGHY LCFLDDHLVG TVPLLVDVPP EEPKLSCFRK
NPLVNAFCEW HPSSTPSPTT KAVMFAKKIN TTNGKSDFQV PCQYSQQLKS FSCEVEILEG
DKVYHIVSLC VANSVGSRSS HNVVFQSLKM VQPDPPANLV VSAIPGXPRW LKVSQWDPES
WDPSYYLLQF ELRYRPVWSK XFTVWPLQVA QHQCVIHDAL RGVKHVVQVR
GKEEFDIGQW SKWSPEVTGT PWLAEPRTTP AGIPGNPTQV SVEDYDNHED QYGSSTEA

[ANTIBODY SPECIFICITY]

The antibody is a rabbit polyclonal antibody raised against IL6R. It has been selected for its ability to recognize IL6R in immunohistochemical staining and western blotting.

[APPLICATIONS]

Western blotting: 1:100-400

Immunocytochemistry in formalin fixed cells: 1:100-500

Immunohistochemistry in formalin fixed frozen section: 1:100-500

Immunohistochemistry in paraffin section: 1:50-200

Enzyme-linked Immunosorbent Assay: 1:100-200

Optimal working dilutions must be determined by end user.

[CONTENTS]

Form & Buffer: Supplied as solution form in PBS, pH7.4, containing 0.02% NaN₃, 50% glycerol.

[QUALITY CONTROL]

Content: The quality control contains recombinant IL6R (Ala19~Ala348) disposed in loading buffer.

Usage: 10uL per well when 3,3'-Diaminobenzidine(DAB) as the substrate.
5uL per well when used in enhanced chemiluminescent (ECL).

Note: The quality control is specifically manufactured as the positive control. Not used for other purposes.

Loading Buffer: 100mM Tris(pH8.8), 2% SDS, 200mM NaCl, 50% glycerol, BPB 0.01%, NaN₃ 0.02%.

[STORAGE]

Store at 4°C for frequent use. Stored at -20°C to -80°C in a manual defrost freezer for one year without detectable loss of activity. Avoid repeated freeze-thaw cycles.