

**PAB177Mu01****Polyclonal Antibody to Low Molecular Weight Kininogen (LMWK)****Organism Species: Mus musculus (Mouse)*****Instruction manual***

FOR IN VITRO USE AND RESEARCH USE ONLY

NOT FOR USE IN CLINICAL DIAGNOSTIC PROCEDURES

9th Edition (Revised in Jul, 2013)

## **[ PRODUCT INFORMATION ]**

**Immunogen:** LMWK, Mouse**Clonality:** Polyclonal**Host:** Rabbit**Immunoglobulin Type:** IgG**Purification:** Affinity Chromatography.**Applications:** WB, ICC, IHC-P, IHC-F, ELISA**Concentration:** 200µg/mL**UOM:** 100µg

## **[ IMMUNOGEN INFORMATION ]**

**Immunogen:** Recombinant LMWK (Glu22~Arg379) expressed in *E.coli*.**USCNC Accession No.:** RPB177Mu01**Sequence:** The target protein is fused with N-terminal His-Tag and its sequence is listed below.

MGHHHHHHSGS-EAQEIDCND EAVFQAVDFS LKQFNPGVKS GNQYMLHRVI  
EGTKTDGSPT FYSFKYLIKE GNCSAQSGLA WQDCDFKDAE EAATGECTAT VGKRENEFFI  
VTQTCKIAPS KAPILKAYFP CIGCVHAIST DSPDLEPVLK HSIEHFNNNT DHSHLFTLRK  
VKSahrQVVA GLNFDITYTI VQTNCSEKERF PSLHGDCVAL PNGDDGECRG NLFMDINNKI  
ANFSQSCTLY SGDDLVEALP KPCPGCPRDI PVDSPPELKEV LGHSIAQLNA ENDHPFYKYI  
DTVKKATSQV VAGTKYVIEF IARETKCSKE SNTELAEDCE IKHLGQSLDC NANVYMRPWE  
NKVVPTVKCQ ALDMTEMAR

## **[ ANTIBODY SPECIFICITY ]**

The antibody is a rabbit polyclonal antibody raised against LMWK. It has been selected for its ability to recognize LMWK in immunohistochemical staining and western blotting.

## **[ APPLICATIONS ]**

Western blotting: 1:100-400

Immunocytochemistry in formalin fixed cells: 1:100-500

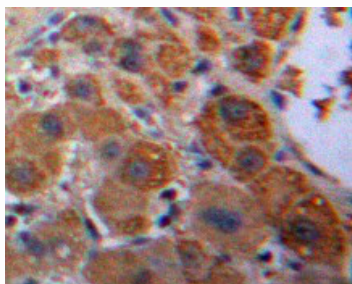
Immunohistochemistry in formalin fixed frozen section: 1:100-500

Immunohistochemistry in paraffin section: 1:50-200

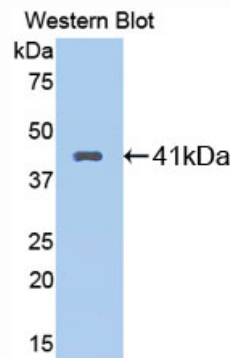
Enzyme-linked Immunosorbent Assay: 1:100-200

Optimal working dilutions must be determined by end user.

## [ IMAGES ]



Used in DAB staining on formalin fixed  
paraffin- embedded tissue



Used in Western Blot ,Sample:  
Recombinant LMWK,Mouse

## [ CONTENTS ]

**Form & Buffer:** Supplied as solution form in PBS, pH7.4, containing 0.02%  $\text{NaN}_3$ , 50% glycerol.

## [ QUALITY CONTROL ]

**Content:** The quality control contains recombinant LMWK (Glu22~Arg379) disposed in loading buffer.

**Usage:** 10uL per well when 3,3'-Diaminobenzidine(DAB) as the substrate.  
5uL per well when used in enhanced chemiluminescent (ECL).

**Note:** The quality control is specifically manufactured as the positive control. Not used for other purposes.

**Loading Buffer:** 100mM Tris(pH8.8), 2% SDS, 200mM NaCl, 50% glycerol, BPB 0.01%,  $\text{NaN}_3$  0.02%.

## [ STORAGE ]

Store at 4°C for frequent use. Stored at -20°C to -80°C in a manual defrost freezer for one year without detectable loss of activity. Avoid repeated freeze-thaw cycles.