

CPK525Ge11 50µg
BSA Conjugated Carmine (CM)
Organism Species: General
Instruction manual

FOR IN VITRO USE AND RESEARCH USE ONLY
NOT FOR USE IN CLINICAL DIAGNOSTIC PROCEDURES

9th Edition (Revised in Jul, 2013)

[PROPERTIES]

Antigen: Conjugated Carmine-BSA

Chemical Formula: C₂₂H₂₀O₁₃

Mol. Mass: 492.39g/mol

Purity: >95%

Endotoxin Level: <1.0EU per 1µg (determined by the LAL method).

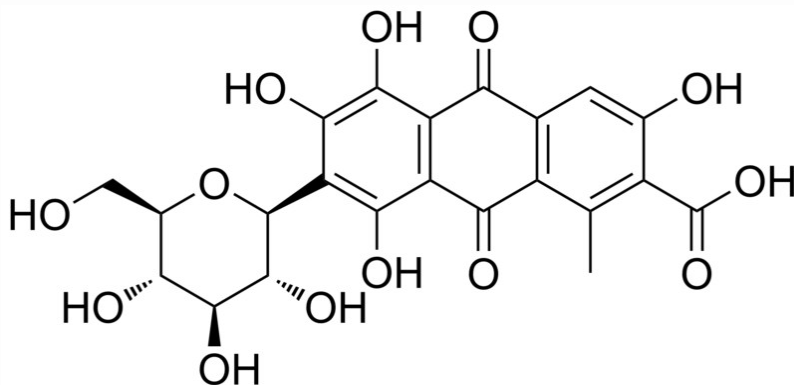
Formulation: Supplied as solution form iin 0.01M PBS, and 50% glycerol.

Concentration: 200µg/mL

Applications: SDS-PAGE; WB; ELISA; IP.

(May be suitable for use in other assays to be determined by the end user.)

Structural Formula:



[USAGE]

Reconstitute in sterile PBS, pH7.2-pH7.4.

[STORAGE AND STABILITY]

Storage: Avoid repeated freeze/thaw cycles.

Store at 2-8°C for one month.

Aliquot and store at -80°C for 12 months.

Stability Test: The thermal stability is described by the loss rate of the target protein. The loss rate was determined by accelerated thermal degradation test, that is, incubate the protein at 37°C for 48h, and no obvious degradation and precipitation were observed. (Referring from China Biological Products Standard, which was calculated by the Arrhenius equation.) The loss of this protein is less than 5% within the expiration date under appropriate storage condition.