

CPA858Ge11 100µg
BSA Conjugated Epinephrine (EPI)
Organism Species: General
Instruction manual

FOR IN VITRO USE AND RESEARCH USE ONLY
NOT FOR USE IN CLINICAL DIAGNOSTIC PROCEDURES

9th Edition (Revised in Jul, 2013)

[PROPERTIES]

Antigen: EPI-BSA

Chemical Formula: $C_9H_{13}NO_3$

Mol. Mass: 183.2g/mol

Purity: >95%

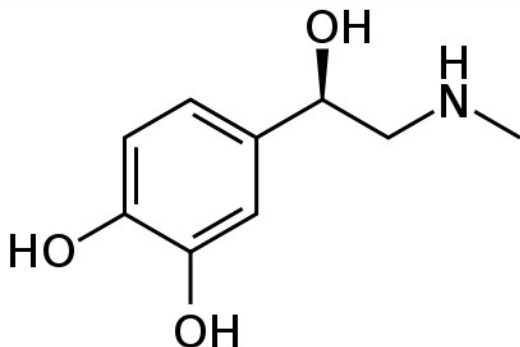
Endotoxin Level: <1.0EU per 1µg (determined by the LAL method).

Formulation: Supplied as lyophilized form in PBS.

Applications: SDS-PAGE; WB; ELISA; IP.

(May be suitable for use in other assays to be determined by the end user.)

Structural Formula:



[**USAGE**]

Reconstitute in sterile ddH₂O.

[**STORAGE AND STABILITY**]

Storage: Avoid repeated freeze/thaw cycles.

Store at 2-8°C for one month.

Aliquot and store at -80°C for 12 months.

Stability Test: The thermal stability is described by the loss rate of the target protein. The loss rate was determined by accelerated thermal degradation test, that is, incubate the protein at 37°C for 48h, and no obvious degradation and precipitation were observed. (Referring from China Biological Products Standard, which was calculated by the Arrhenius equation.) The loss of this protein is less than 5% within the expiration date under appropriate storage condition.