

PAC147Hu71

Biotin-linked Antibody to Collagen Type VII (COL7)

Organism Species: Homo sapiens (Human)

Instruction manual

FOR IN VITRO USE AND RESEARCH USE ONLY
NOT FOR USE IN CLINICAL DIAGNOSTIC PROCEDURES

9th Edition (Revised in Jul, 2013)

[**PRODUCT INFORMATION**]

Immunogen: COL7, Human

Conjugation: Biotin

Clonality: Polyclonal

Host: Rabbit

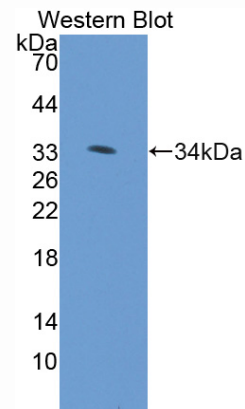
Immunoglobulin Type: IgG

Purification: Affinity Chromatography.

Applications: WB, ICC, IHC-P, IHC-F, ELISA

Concentration: 200µg/mL

UOM: 100µg



Sample: Recombinant COL7, Human

[**IMMUNOGEN INFORMATION**]

Immunogen: Recombinant COL7 (Pro190~Asp472) expressed in *E.coli*.

Accession No.: RPC147Hu01

Sequence: The target protein is fused with N-terminal His-Tag and its sequence is listed below.

MGHHHHHHSG SEF- P TSDFFFFVND FSILRTLLPL VSRRVCTTAG GVPVTRPPDD
STSAPRDLVL SEPSSQSLRV QWTAASGPVT GYKVQYTPLT GLGQPLPSEK QEVNVPAGET
SVRLRGLRPL TEYQVTVIAL YANSIGEAVS GTARTTALEG PELTIQNTTA HSLLVAWRSV
PGATGYRVTW RVLSSGGPTQQ QELGPGQGSV LLRDLEPGTD YEVTVSTLFG
RSVGPATSLM ARTDASVEQT LRPVILGPTS ILLSWNLVPE ARGYRLEWRR ETGLEPPQKV
VLPSDVTRYQ LD

[ANTIBODY SPECIFICITY]

The antibody is a rabbit polyclonal antibody raised against COL7. It has been selected for its ability to recognize COL7 in immunohistochemical staining and western blotting.

[APPLICATIONS]

Western blotting: 1:100-400

Immunocytochemistry in formalin fixed cells: 1:100-500

Immunohistochemistry in formalin fixed frozen section: 1:100-500

Immunohistochemistry in paraffin section: 1:50-200

Enzyme-linked Immunosorbent Assay: 1:100-200

Optimal working dilutions must be determined by end user.

[CONTENTS]

Form & Buffer: Supplied as solution form in PBS, pH7.4, containing 0.02% NaN₃, 50% glycerol.

[STORAGE]

Store at 4°C for frequent use. Stored at -20°C to -80°C in a manual defrost freezer for one year without detectable loss of activity. Avoid repeated freeze-thaw cycles.