

PAA556Hu71

Biotin-Linked Antibody to Keratin 7 (KRT7)

Organism Species: Homo sapiens (Human)

Instruction manual

FOR IN VITRO USE AND RESEARCH USE ONLY

NOT FOR USE IN CLINICAL DIAGNOSTIC PROCEDURES

9th Edition (Revised in Jul, 2013)

[**PRODUCT INFORMATION**]

Immunogen: KRT7, Human

Clonality: Polyclonal

Conjugation: Biotin

Host: Rabbit

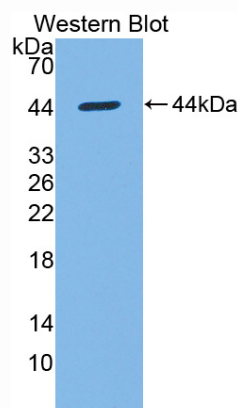
Immunoglobulin Type: IgG

Purification: Affinity Chromatography.

Applications: WB, ICC, IHC-P, IHC-F, ELISA

Concentration: 200µg/mL

UOM: 100µg



Sample: Recombinant KRT7, Human

[**IMMUNOGEN INFORMATION**]

Immunogen: Recombinant KRT7 (Glu91~Lys394) expressed in *E.coli*.

Accession No.: RPA556Hu01

Sequence: The target protein is fused with two N-terminal Tags, His-tag and S-tag and its sequence is listed below.

MHHHHHHSSG LVPRGSGMKE TAAAKFERQH MDSPDLGTDD DDKAMADIGS EF-
 ESEQIKTLNN KFAFIDKVR FLEQQNKLL TKWTLLQEQK SAKSSRLPDI FEAQIAGLRG
 QLEALQVDGG RLEAELRSMQ DVVEDFKNKY EDEINHRTAA ENFVVLKKD VDAAYMSKVE
 LEAKVDALND EINFLRTLNE TELTELQSQI SDTSVVLSD NSRSLDLGI IAEVKAQYEE
 MAKCSRAEAE AWYQTKFETL QAQAGKHGDD LRNTRNEISE MNRAIQRQLQA EIDNIKNQRA
 KLEAAIAEAE ERGELALKDA RAKQEELEAA LQRGKQDMAR QLREYQELMS VKLALDIEIA
 TYRK

[ANTIBODY SPECIFICITY]

The antibody is a rabbit polyclonal antibody raised against KRT7. It has been selected for its ability to recognize KRT7 in immunohistochemical staining and western blotting.

[APPLICATIONS]

Western blotting: 1:100-400

Immunocytochemistry in formalin fixed cells: 1:100-500

Immunohistochemistry in formalin fixed frozen section: 1:100-500

Immunohistochemistry in paraffin section: 1:50-200

Enzyme-linked Immunosorbent Assay: 1:100-200

Optimal working dilutions must be determined by end user.

[CONTENTS]

Form & Buffer: Supplied as solution form in PBS, pH7.4, containing 0.02% NaN₃, 50% glycerol.

[STORAGE]

Store at 4°C for frequent use. Stored at -20°C to -80°C in a manual defrost freezer for one year without detectable loss of activity. Avoid repeated freeze-thaw cycles.