

PAB070Hu71

Biotin-Linked Antibody to Tryptase (TPS)

Organism Species: Homo sapiens (Human)

Instruction manual

FOR IN VITRO USE AND RESEARCH USE ONLY

NOT FOR USE IN CLINICAL DIAGNOSTIC PROCEDURES

[**PRODUCT INFORMATION**]

Immunogen: TPS, Human

Clonality: Polyclonal

Conjugation: Biotin

Host: Rabbit

Immunoglobulin Type: IgG

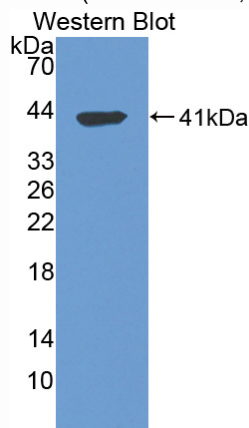
Purification: Affinity Chromatography.

Applications: WB, ICC, IHC-P, IHC-F, ELISA

Concentration: 200µg/mL

UOM: 100µg

9th Edition (Revised in Jul, 2013)



Sample: Recombinant TPS, Human

[**IMMUNOGEN INFORMATION**]

Immunogen: Recombinant TPS (Gly161~Tyr262) expressed in *E.coli*.

Accession No.: RPB070Hu01

Sequence: The target protein is fused with two N-terminal Tags, His-tag and GST-tag and its sequence is listed below.

MSPILGYWKI KGLVQPTRL LLEYLEEKYEE HLYERDEGDK WRNKKFELGL EFPNLPYYID
 GDVKLTQSMA IIRYIADKHN MLGGCPKERA EISMLEGAVL DIRYGVSR IA YSKDFETLKV
 DFLSKLPEML KMFEDRLCHK TYLNGDHVTH PDFMLYDALD VVLYMDPMCL DAFPKLVCFK
 KRIEAIQID KYLKSSKYIA WPLQGWQATF GGGDHPPKSD GSTSGSGHHH HHHSAGLVPR
 GSTAIGMKET AA AKFERQHM DSPDLGTLEV LFQGPLGSEF- GDVDNDERLP PPFPLKQVKV
 PIMENHICDA KYHLGAYTGD DVRIVRDDML CAGNTRRDSC QGDSSGGPLVC
 KVNGTWLQAG VVSWGEGCAQ PNRPGIYTRV TY

[ANTIBODY SPECIFICITY]

The antibody is a rabbit polyclonal antibody raised against TPS. It has been selected for its ability to recognize TPS in immunohistochemical staining and western blotting.

[APPLICATIONS]

Western blotting: 1:100-400

Immunocytochemistry in formalin fixed cells: 1:100-500

Immunohistochemistry in formalin fixed frozen section: 1:100-500

Immunohistochemistry in paraffin section: 1:50-200

Enzyme-linked Immunosorbent Assay: 1:100-200

Optimal working dilutions must be determined by end user.

[CONTENTS]

Form & Buffer: Supplied as solution form in PBS, pH7.4, containing 0.02% NaN₃, 50% glycerol.

[STORAGE]

Store at 4°C for frequent use. Stored at -20°C to -80°C in a manual defrost freezer for one year without detectable loss of activity. Avoid repeated freeze-thaw cycles.