

EPC374Mu61 100µg

Eukaryotic Carboxylesterase 1 (CES1)

Organism Species: *Mus musculus* (Mouse)

Instruction manual

FOR RESEARCH USE ONLY

NOT FOR USE IN CLINICAL DIAGNOSTIC PROCEDURES

12th Edition (Revised in Aug, 2016)

[PROPERTIES]

Source: Eukaryotic expression

Host: 293F cell

Residues: His19~Leu565

Tags: N-terminal His Tag

Subcellular Location: Secreted

Purity: > 90%

Traits: Freeze-dried powder

Buffer formulation: PBS, pH7.4, containing 5% Trehalose.

Original Concentration: 200µg/mL

Applications: Positive Control; Immunogen; SDS-PAGE; WB.

(May be suitable for use in other assays to be determined by the end user.)

Predicted isoelectric point: 5.9

Predicted Molecular Mass: 62.4kDa

Accurate Molecular Mass: 60kDa as determined by SDS-PAGE reducing conditions.

[USAGE]

Reconstitute in 10mM PBS (pH7.4) to a concentration of 0.1-1.0 mg/mL. Do not vortex.

[STORAGE AND STABILITY]

Storage: Avoid repeated freeze/thaw cycles.

Store at 2-8°C for one month.

Aliquot and store at -80°C for 12 months.

Stability Test: The thermal stability is described by the loss rate. The loss rate was determined by accelerated thermal degradation test, that is, incubate the protein at 37°C for 48h, and no obvious degradation and precipitation were observed. The loss rate is less than 5% within the expiration date under appropriate storage condition.

[SEQUENCE]

```

HP SLPPVVHTVH GKVLGKYVTL EGFSQPVAVF
LGVPFAKPPL GSLRFAPPEP AEPWSFVKHT TSYPPLCYQN PEAALRLAEL
FTNQRKIIPH KFSEDCLYLN IYTPADLTQN SRLPVMWVIH GGGLVIDGAS
TYDGVPLAVH ENVVVVVIQY RLGIVGFFST EDEHSRGNWG HLDQVAALHW
VQDNIANFGG NPGSVTIFGE SAGGESVSVL VLSPLAKNLF HRAIAQSSVI
FNPCLFGRAA RPLAKKIAAL AGCKTTTSAA MVHCLRQKTE DELLEVSLKM
KFGTVDFLGD PRESYPFLPT VIDGVLLPKA PEEILAEKSF NTPYPMVGIN
KHEFGWIIPM FLDFPLSERK LDQKTAASIL WQAYPILNIS EKLIPAAIEK
YLGATEDPAT MTDLFLDLIG DIMFGVPSVI VSRSHRDAGA PTYMYEYQYR
PSFVSDDRPQ ELLGDHADEL FSVWGAPFLK EGASEEEINL SKMVMKFWAN
FARNGNPNGE GLPHWPEYDQ KEGYLQIGVP AQAHRCLKDK EVDFWTELRA
KETAERSSHR EHVEL

```

[IDENTIFICATION]

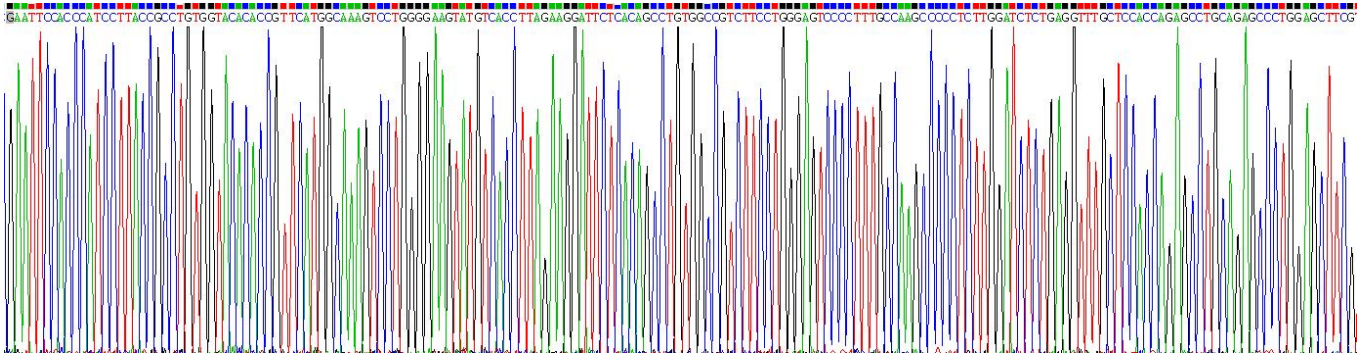


Figure . Gene Sequencing (extract)

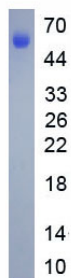


Figure. SDS-PAGE

[IMPORTANT NOTE]

The kit is designed for research use only, we will not be responsible for any issue if the kit was

used in clinical diagnostic or any other procedures.