

**EPH816Hu61 1mg**

**Eukaryotic Interleukin 4 Induced Protein 1 (IL4I1)**

**Organism Species: *Homo sapiens (Human)***

***Instruction manual***

FOR RESEARCH USE ONLY

NOT FOR USE IN CLINICAL DIAGNOSTIC PROCEDURES

---

13th Edition (Revised in Aug, 2023)

**[ PROPERTIES ]**

**Source:** Eukaryotic expression

**Host:** CHO Cell

**Residues:** Gln22~His567

**Tags:** N-terminal His Tag and C-terminal Fc Region of Human IgG1

**Subcellular Location:** Lysosome

**Purity:** > 90%

**Traits:** Freeze-dried powder

**Buffer formulation:** PBS, pH7.4, containing 5% Trehalose.

**Original Concentration:** 120µg/mL

**Applications:** Positive Control; Immunogen; SDS-PAGE; WB.

(May be suitable for use in other assays to be determined by the end user.)

**Predicted isoelectric point:** 9.0

**Predicted Molecular Mass:** 91.7kDa

**Accurate Molecular Mass:** 90kDa as determined by SDS-PAGE reducing conditions.

**[ USAGE ]**

Reconstitute in 10mM PBS (pH7.4) to a concentration of 0.1-1.0 mg/mL. Do not vortex.

**[ STORAGE AND STABILITY ]**

**Storage:** Avoid repeated freeze/thaw cycles.

Store at 2-8°C for one month.

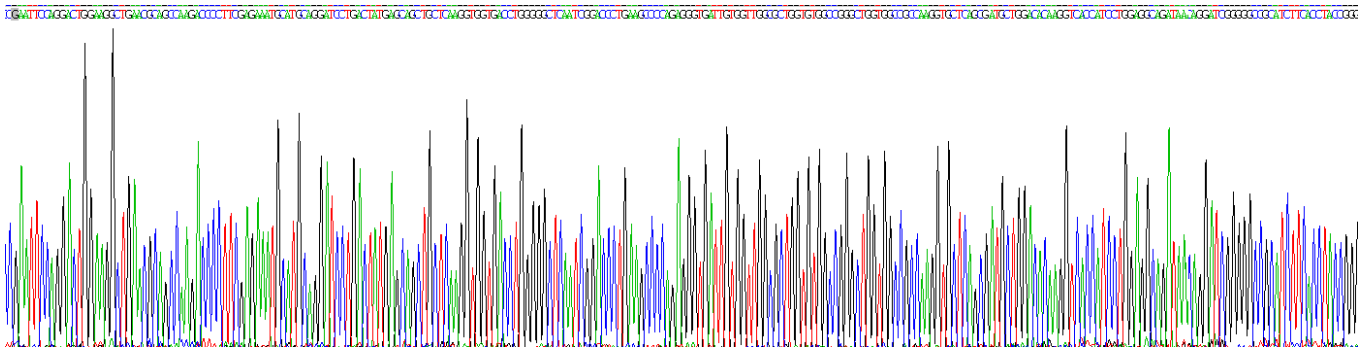
Aliquot and store at -80°C for 12 months.

**Stability Test:** The thermal stability is described by the loss rate. The loss rate was determined by accelerated thermal degradation test, that is, incubate the protein at 37°C for 48h, and no obvious degradation and precipitation were observed. The loss rate is less than 5% within the expiration date under appropriate storage condition.

**[ SEQUENCE ]**

QDWAERSQ DPFCKMQDP DYEQLLKVVT  
WGLNRTLKPQ RVIVVGAGVA GLVAAKVLSD AGHKVTILEA DNRIGGRIFT  
YRDQNTGWIG ELGAMRMPSS HRILHKLCQG LGLNLTKFTQ YDKNTWTEVH  
EVKLRNYVVE KVPEKLGAL RPQEKHSPE DIYQMALNQA LKDLKALGCR  
KAMKKFERHT LLEYLLGEGN LSRPAVQLLG DVMSEDGFFY LSFAEALRAH  
SCLSDRLQYS RIVGGWDLIP RALLSSLSGL VLLNAPVVAM TQGPVDVHVQ  
IETSPARNL KVLKADVLL TASGPAVKRI TFSPLPRHM QEALRRLHYV  
PATKVFLSFR RPFWREEHIE GGHSNTDRPS RMIFYPPPRE GALLASYTW  
SDAAAFAGL SREEALRLAL DDVAALHGPV VRQLWDGTGV VKRWAEDQHS  
QGGFVVQPPA LWQTEKDDWT VPYGRIYFAG EHTAYPHGWV ETAVKSALRA  
AIKINSRKGP ASDTASPEGH ASDMEGQGHV HGVASSPSHD LAKEEGSHPP  
VQGQLSLQNT THTRTSH

## [ IDENTIFICATION ]



**Figure . Gene Sequencing (extract)**

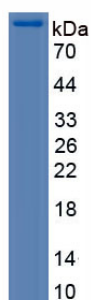


Figure. SDS-PAGE

## [ IMPORTANT NOTE ]

The kit is designed for research use only, we will not be responsible for any issue if the kit was used in clinical diagnostic or any other procedures.