

**EPC580Hu61 10µg**

**Eukaryotic Lysyl Oxidase (LOX)**

**Organism Species: *Homo sapiens (Human)***

***Instruction manual***

**FOR RESEARCH USE ONLY**

**NOT FOR USE IN CLINICAL DIAGNOSTIC PROCEDURES**

---

13th Edition (Revised in Aug, 2023)

**[ PROPERTIES ]**

**Source:** Eukaryotic expression

**Host:** 293F cell

**Residues:** Asp169~Tyr417

**Tags:** N-terminal His Tag

**Subcellular Location:** Secreted

**Purity:** > 90%

**Traits:** Freeze-dried powder

**Buffer formulation:** PBS, pH7.4, containing 5% Trehalose.

**Original Concentration:** 200µg/mL

**Applications:** Positive Control; Immunogen; SDS-PAGE; WB.

(May be suitable for use in other assays to be determined by the end user.)

**Predicted isoelectric point:** 6.3

**Predicted Molecular Mass:** 30.6kDa

**Accurate Molecular Mass:** 33kDa as determined by SDS-PAGE reducing conditions.

**[ USAGE ]**

Reconstitute in ddH<sub>2</sub>O to a concentration of 0.1-0.5 mg/mL. Do not vortex.

**[ STORAGE AND STABILITY ]**

**Storage:** Avoid repeated freeze/thaw cycles.

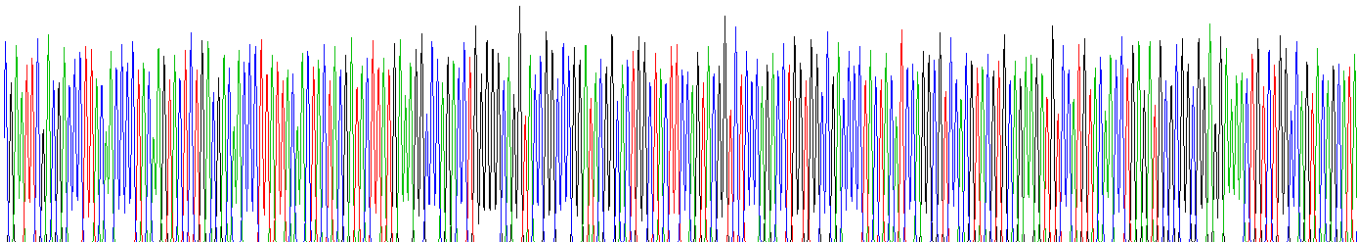
Store at 2-8°C for one month.

Aliquot and store at -80°C for 12 months.

**Stability Test:** The thermal stability is described by the loss rate. The loss rate was determined by accelerated thermal degradation test, that is, incubate the protein at 37°C for 48h, and no obvious degradation and precipitation were observed. The loss rate is less than 5% within the expiration date under appropriate storage condition.

**[ SEQUENCE ]**

	DD	PYNPYKYSDD	NPYYNYYDTY	ERPRPGGRYR
PGYGTGYFQY	GLPDLVADPY	YIQASTYVQK	MSMYNLRCAA	EENCLASTAY
RADVRDYDHR	VLLRFPQRVK	NQGTSDFLPS	RPRYSWEWHS	CHQHYHSMDE
FSHYDLLDAN	TQRRVAEGHK	ASFCELTSC	DYGYHRRFAC	TAHTQGLSPG
CYDTYGADID	CQWIDITDVK	PGNYILKVSV	NPSYLVPESD	YTNNVVRCDI
RYTGHHAYAS	GCTISPY			

[illegible]

### Figure . Gene Sequencing (extract)

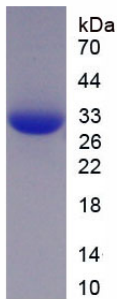


Figure. SDS-PAGE

**[ IMPORTANT NOTE ]**

The kit is designed for research use only, we will not be responsible for any issue if the kit was used in clinical diagnostic or any other procedures.