

**EPC895Mu61 100µg**

**Eukaryotic Sortilin 1 (SORT1)**

**Organism Species: *Mus musculus* (Mouse)**

***Instruction manual***

FOR RESEARCH USE ONLY

NOT FOR USE IN CLINICAL DIAGNOSTIC PROCEDURES

---

12th Edition (Revised in Aug, 2016)

**[ PROPERTIES ]**

**Source:** Eukaryotic expression

**Host:** 293F cell

**Residues:** Arg74~Ser754

**Tags:** N-terminal His Tag

**Subcellular Location:** Membrane, Golgi apparatus

**Purity:** > 95%

**Traits:** Freeze-dried powder

**Buffer formulation:** 20mM Tris, 150mM NaCl, pH8.0, containing 0.01% SKL, 5% Trehalose.

**Original Concentration:** 150µg/mL

**Applications:** Positive Control; Immunogen; SDS-PAGE; WB.

(May be suitable for use in other assays to be determined by the end user.)

**Predicted isoelectric point:** 5.4

**Predicted Molecular Mass:** 77.5kDa

**Accurate Molecular Mass:** 100kDa as determined by SDS-PAGE reducing conditions.

**Phenomenon explanation:**

The possible reasons that the actual band size differs from the predicted are as follows:

1. Splice variants: Alternative splicing may create different sized proteins from the same gene.
2. Relative charge: The composition of amino acids may affect the charge of the protein.
3. Post-translational modification: Phosphorylation, glycosylation, methylation etc.
4. Post-translation cleavage: Many proteins are synthesized as pro-proteins, and then cleaved to give the active form.
5. Polymerization of the target protein: Dimerization, multimerization etc.

**[ USAGE ]**

Reconstitute in 20mM Tris, 150mM NaCl (pH8.0) to a concentration of 0.1-1.0 mg/mL. Do not vortex.

**[ STORAGE AND STABILITY ]**

**Storage:** Avoid repeated freeze/thaw cycles.

Store at 2-8°C for one month.

Aliquot and store at -80°C for 12 months.

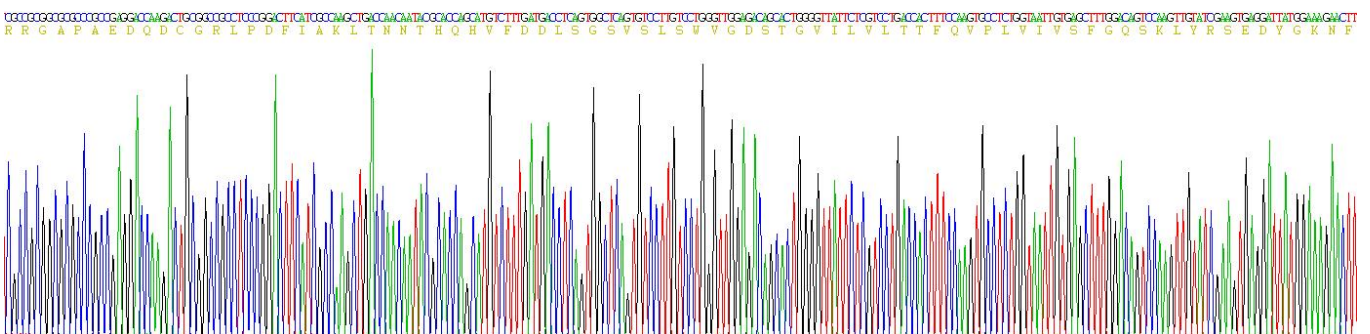
**Stability Test:** The thermal stability is described by the loss rate. The loss rate was determined by accelerated thermal degradation test, that is, incubate the protein at 37°C for 48h, and no obvious degradation and precipitation were observed. The loss rate is less than 5% within the expiration date under appropriate storage condition.

**[ SEQUENCE ]**

```

                RRGAPAE DQDCGRLPDF IAKLTNNTHQ
HFVDDLGSV SLSWVG DSTG VILVLTTFQV PLVIVSFGQS KLYRSEDYGK
NFKDITNLIN NTFIRTEFGM AIGPENSGKV ILTAEVSGGS RGGRVFRSSD
FAKNFVQTDL PFHPLTQMMY SPQNSDYLLA LSTENGLWVS KNFGEKWEEI
HKAACLAKWG PNNIIFFTTH VNGSCKADLG ALELWRTSDL GKTFTKIGVK
IYSFGLGGRF LFASVMADKD TTRRIHVSTD QGDTWSMAQL PSVGQEQFYS
ILAANEDMVF MHVDEPGDTG FGTIFTSDDR GIVYSKSLDR HLYTTTGET
DFTNVTSLRG VYITSTLSED NSIQSMITFD QGGRWEHLRK PENSKCDATA
KNKNECSLHI HASYSISQKL NVPMAPLSEP NAVGIVIAHG SVGDAISVMV
PDVVISDDGG YSWAKMLEGP HYYTILDSSG IIVAIEHSNR PINVIKSTD
EGQCWQSYVF TQEPYFTGL ASEPGARSMN ISIWGFTESE ITRQWVSYTV
DFKDILERN C EEDDYTTWLA HSTDPGDYKD GCILGYKEQF LRLRKSSVCQ
NGRDYVVAQ Q PSVCPCSLED FLCDFGYFRP ENASECVEQP ELKGHELEFC
LYGKEEHLT T NGYRKIPGDK CQGGMNPARE VKDLKKKCTS NFLNPTKQNS
KSNS
    
```

**[ IDENTIFICATION ]**



**Figure. Gene Sequencing (Extract)**

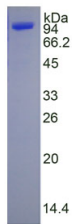


Figure. SDS-PAGE

**[ IMPORTANT NOTE ]**

The kit is designed for research use only, we will not be responsible for any issue if the kit was used in clinical diagnostic or any other procedures.