

**EPB171Hu62 50µg**

**Eukaryotic Transferrin Receptor (TFR)**

**Organism Species: *Homo sapiens (Human)***

***Instruction manual***

**FOR RESEARCH USE ONLY**

**NOT FOR USE IN CLINICAL DIAGNOSTIC PROCEDURES**

---

13th Edition (Revised in Aug, 2023)

**[ PROPERTIES ]**

**Source:** Eukaryotic expression

**Host:** 293F cell

**Residues:** Cys89~Phe760

**Tags:** N-terminal His Tag

**Subcellular Location:** Membrane, Secreted

**Purity:** > 90%

**Traits:** Freeze-dried powder

**Buffer formulation:** PBS, pH7.4, containing 5% Trehalose .

**Original Concentration:** 750µg/mL

**Applications:** Positive Control; Immunogen; SDS-PAGE; WB.

(May be suitable for use in other assays to be determined by the end user.)

**Predicted isoelectric point:** 6.8

**Predicted Molecular Mass:** 76.8kDa

**Accurate Molecular Mass:** 80kDa as determined by SDS-PAGE reducing conditions.

**Phenomenon explanation:**

The possible reasons that the actual band size differs from the predicted are as follows:

1. Splice variants: Alternative splicing may create different sized proteins from the same gene.
2. Relative charge: The composition of amino acids may affects the charge of the protein.
3. Post-translational modification: Phosphorylation, glycosylation, methylation etc.
4. Post-translation cleavage: Many proteins are synthesized as pro-proteins, and then cleaved to give the active form.
5. Polymerization of the target protein: Dimerization, multimerization etc.

**[ USAGE ]**

Reconstitute in 10mM PBS (pH7.4) to a concentration of 0.1-1.0 mg/mL. Do not vortex.

**[ STORAGE AND STABILITY ]**

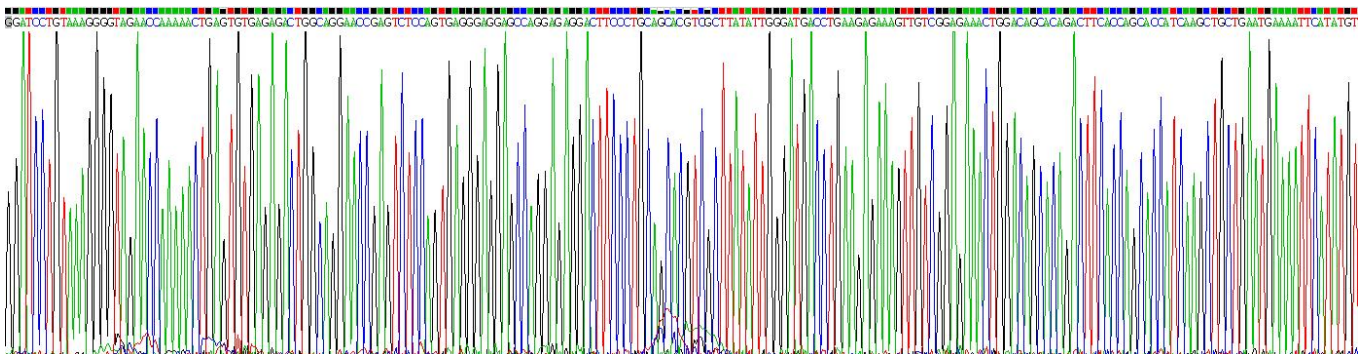
**Storage:** Avoid repeated freeze/thaw cycles.

Aliquot and store at -80°C for 12 months.

**[ SEQUENCE ]**

				CK	GVEPKTECER
LAGTESPVRE	EPGEDFPAAR	RLYWDDLKRR	LSEKLDSTDF	TGTIKLLNEN	
SYVPREAGSQ	KDENLALYVE	NQFREFKLSK	VWRDQHFVKI	QVKDSAQNSV	
IIVDKNGRLV	YLVENPGGYV	AYSKAATVTG	KLVHANFGTK	KDFEDLYTPV	
NGSIVIVRAG	KITFAEKVAN	AESLNAIGVL	IYMDQTKFPI	VNAELSSFFGH	
AHLGTGDPYT	PGFPSFNHTQ	FPPSRSSGLP	NIPVQTISRA	AAEKLFGNME	
GDCPSDWKTD	STCRMVTSES	KNVKLTVSNV	LKEIKILNIF	GVIKGFVEPD	
HYVVVGAQRD	AWGPGAASKG	VGTALLLKLA	QMFSDMVLKD	GFQPSRSIIF	
ASWSAGDFGS	VGATEWLEGY	LSSLHLKAFT	YINLDKAVLG	TSNFKVSASP	
LLYTLIEKTM	QNVKHPVTGQ	FLYQDSNWAS	KVEKLTLDNA	AFPFLAYSGI	
PAVSFCFCED	TDYPYLGTTM	DTYKELIERI	PELNKVARAA	AEVAGQFVIK	
LTHDVELNLD	YERYNSQLLS	FVRDLNQYRA	DIKEMGLSLQ	WLYSARGDFF	
RATSRLTTDF	GNAEKTDRFV	MKKLNDRVMR	VEYHFLSPYV	SPKESPFRRHV	
FWGSGSHTLP	ALLENLKLRR	QNNGAFNETL	FRNQLALATW	TIQGAANALS	
GDVWDIDNEF					

## [ IDENTIFICATION ]



**Figure . Gene Sequencing (extract)**

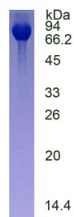


Figure. SDS-PAGE

### [ **IMPORTANT NOTE** ]

The kit is designed for research use only, we will not be responsible for any issue if the kit was used in clinical diagnostic or any other procedures.