

PAA861Mu81

FITC-linked Antibody to Complement Component 3 (C3)

Organism Species: Mus musculus (Mouse)

Instruction manual

FOR IN VITRO USE AND RESEARCH USE ONLY

NOT FOR USE IN CLINICAL DIAGNOSTIC PROCEDURES

9th Edition (Revised in Jul, 2013)

[PRODUCT INFORMATION]

Immunogen: C3, Mouse

Clonality: Polyclonal

Conjugation: FITC

Host: Rabbit

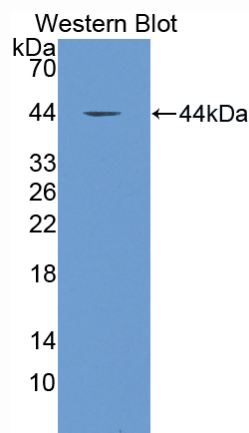
Immunoglobulin Type: IgG

Purification: Affinity Chromatography.

Applications: WB, ICC, IHC-P, IHC-F, ELISA

Concentration: 200µg/mL

UOM: 100µg



Sample: Recombinant C3, Mouse

[IMMUNOGEN INFORMATION]

Immunogen: Recombinant C3 (Glu1314~Asn1663) expressed in *E.coli*.

Accession No.: RPA861Mu01

Sequence: The target protein is fused with N-terminal His-Tag and its sequence is listed below.

MGHHHHHHSGSEF-ENGILLR SEETKQNEAF SLTAKGKGRG TLSVVAVYHA KLKSKVTCKK
FDLRVSIRPA PETAKKPEEA KNTMFLEICT KYLGDVDATM SILDISMMTG FAPDTKDLEL
LASGVDRYIS KYEMNKAFFN KNTLIILEK ISHTEEDCLT FKVHQYFNVG LIQPGSVKVY
SYYNLEESCT RFYHPEKDDG MLSKLCHSEM CRCAEENCFFM QQSQEKINLN
VRDKACEPG VDYVYKTELT NIELLDFFDE YTMITQQVIK SGSDEVQAGQ QRFKISHIKC
RNALKLQKGK KYLMWGLSSD LWGEKPNTSY IIGKDTWVEH WPEAEECQDQ
KYQKQCEELG AFTESMVVYG CPN

[ANTIBODY SPECIFICITY]

The antibody is a rabbit polyclonal antibody raised against C3. It has been selected for its ability to recognize C3 in immunohistochemical staining and western blotting.

[APPLICATIONS]

Western blotting: 1:50-400

Immunocytochemistry in formalin fixed cells: 1:50-500

Immunohistochemistry in formalin fixed frozen section: 1:50-500

Immunohistochemistry in paraffin section: 1:10-100

Enzyme-linked Immunosorbent Assay: 1:100-200

Optimal working dilutions must be determined by end user.

[CONTENTS]

Form & Buffer: Supplied as solution form in PBS, pH7.4, containing 0.02% NaN₃, 50% glycerol.

[STORAGE]

Store at 4°C for frequent use. Stored at -20°C to -80°C in a manual defrost freezer for one year without detectable loss of activity. Avoid repeated freeze-thaw cycles.

Note: *As fluorescence can photobleach when exposed to light, so the antibody must be protected from light.*