

PAC025Hu81

FITC-Linked Antibody to Keratin 8 (KRT8)
Organism Species: Homo sapiens (Human)

Instruction manual

FOR IN VITRO USE AND RESEARCH USE ONLY
NOT FOR USE IN CLINICAL DIAGNOSTIC PROCEDURES

9th Edition (Revised in Jul, 2013)

[PRODUCT INFORMATION]

Immunogen: KRT8, Human

Conjugation: FITC

Clonality: Polyclonal

Host: Rabbit

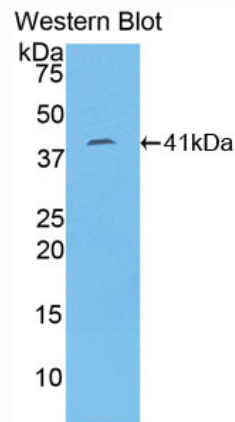
Immunoglobulin Type: IgG

Purification: Affinity Chromatography.

Applications: WB, ICC, IHC-P, IHC-F, ELISA

Concentration: 200µg/mL

UOM: 50µg



Sample: Recombinant KRT8, Human

[IMMUNOGEN INFORMATION]

Immunogen: Recombinant KRT8 (Lys92~Lys393) expressed in *E.coli*.

Accession No.: RPC025Hu01

Sequence: The target protein is fused with two N-terminal Tags, His-tag and S-tag and its sequence is listed below.

MHHHHHHSSG LVPRGSGMKE TAAAKFERQH MDSPDLGTDD DDKAMADIGS EF-
KEQIKTLNN KFASFIDKVR FLEQQNKMLE TKWSSLQQQK TARSNMDNMF ESYINNLRRQ
LETLGQEKLK LEAELGNMQG LVEDFKNKYE DEINKRTEME NEFVLIKKDV DEAYMNVKVEL
ESRLEGLTDE INFLRQLYEE EIRELQSQIS DTSVVLSMDN SRSLDMSII AEVKAQYEDI
ANRSRAEAE MYQIKYEELQ SLAGKHGDDL RRTKTEISEM NRNISRQLAE IEGLKGQRAS
LEAAIADAEQ RGELAIKDAN AKLSELEAAL QRAKQDMARQ LREYQELMNV KLALDIEIAT
YRK

[ANTIBODY SPECIFICITY]

The antibody is a rabbit polyclonal antibody raised against KRT8. It has been selected for its ability to recognize KRT8 in immunohistochemical staining and western blotting.

[APPLICATIONS]

Western blotting: 1:100-400

Immunocytochemistry in formalin fixed cells: 1:100-500

Immunohistochemistry in formalin fixed frozen section: 1:100-500

Immunohistochemistry in paraffin section: 1:50-200

Enzyme-linked Immunosorbent Assay: 1:100-200

Optimal working dilutions must be determined by end user.

[CONTENTS]

Form & Buffer: Supplied as solution form in PBS, pH7.4, containing 0.02% NaN₃, 50% glycerol.

[STORAGE]

Store at 4°C for frequent use. Stored at -20°C to -80°C in a manual defrost freezer for one year without detectable loss of activity. Avoid repeated freeze-thaw cycles.

Note: *As fluorescence can photobleach when exposed to light, so the antibody must be protected from light.*