

PAB329Mu81

FITC-Linked Antibody to Microtubule Associated Protein 2 (MAP2)

Organism: Mus musculus (Mouse)

Instruction manual

FOR IN VITRO USE AND RESEARCH USE ONLY
NOT FOR USE IN CLINICAL DIAGNOSTIC PROCEDURES

9th Edition (Revised in Jul, 2013)

[**PRODUCT INFORMATION**]

Immunogen: MAP2, Mouse

Clonality: Polyclonal

Conjugation: FITC

Host: Rabbit

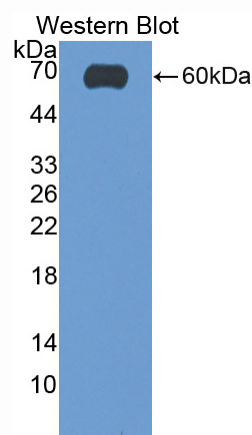
Immunoglobulin Type: IgG

Purification: Affinity Chromatography.

Applications: WB, ICC, IHC-P, IHC-F, ELISA

Concentration: 200µg/mL

UOM: 100µg



Sample: Recombinant MAP2, Mouse

[**IMMUNOGEN INFORMATION**]

Immunogen: Recombinant MAP2 (Thr1457~Ser1728) expressed in *E.coli*.

Accession No.: RPB329Mu01

Sequence: The target protein is fused with two N-terminal Tags, His-tag and GST-tag and its sequence is listed below.

MSPILGYWKI KGLVQPTRLL LEYLEEKYEE HLYERDEGDK WRNKKFELGL EFPNLPYYID
GDVKLTQSMA IIRYIADKHN MLGGCPKERA EISMLEGAVL DIRYGVSRIA YSKDFETLKV
DFLSKLP EML KMFEDRLCHK TYLNGDHVTH PDFMLYDALD VVLYMDPMCL DAFPKLVCFK
KRIEAIQID KYLKSSKYIA WPLQGQWQATF GGGDHPPKSD GSTSGSGHHH HHHSAGLVPR
GSTAIGMKET AAKAFERQHM DSPDLGTLEV LFQGPLGSEF-TVSR DEVRRKKAVY
KKAELAKKSE VQAHSPSRKL ILKPAIKYTR PTHLSCVKRK TTAASGD LAQ APGAFKQAKD

KVTDGISKSP EKRSSLPRPS SILPPRRGVS GDREENSFSL NSSISSARRT TRSEPIRRAG
KSGTSTPTTP GSTAITPGTP PSYSSRTPGT PGTPSYPRTP GTPKSGILVP SEKKVAIIRT
PPKSPATPKQ LRLINQPLPD LKNVSKIGS TDNIKYQPKG GQVQIVTKKI DLSHVTSKCG
SLKNIRHRPG GGRVKIES

[ANTIBODY SPECIFICITY]

The antibody is a rabbit polyclonal antibody raised against MAP2. It has been selected for its ability to recognize MAP2 in immunohistochemical staining and western blotting.

[APPLICATIONS]

Western blotting: 1:100-400

Immunocytochemistry in formalin fixed cells: 1:100-500

Immunohistochemistry in formalin fixed frozen section: 1:100-500

Immunohistochemistry in paraffin section: 1:50-200

Enzyme-linked Immunosorbent Assay: 1:100-200

Optimal working dilutions must be determined by end user.

[CONTENTS]

Form & Buffer: Supplied as solution form in PBS, pH7.4, containing 0.02% NaN₃, 50% glycerol.

[STORAGE]

Store at 4°C for frequent use. Stored at -20°C to -80°C in a manual defrost freezer for one year without detectable loss of activity. Avoid repeated freeze-thaw cycles.