

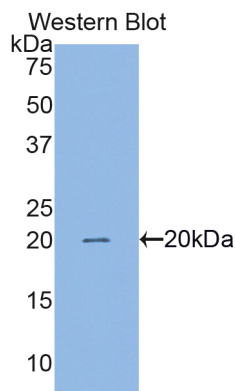
pA92045Hu81
FITC-Linked Antibody to Survivin (Surv)
Organism: Homo sapiens (Human)
Instruction manual

FOR IN VITRO USE AND RESEARCH USE ONLY
NOT FOR USE IN CLINICAL DIAGNOSTIC PROCEDURES

7th Edition (Revised in May, 2013)

[PRODUCT INFORMATION]

Immunogen: Surv, Human
Conjugation: FITC
Clonality: Polyclonal
Host: Rabbit
Immunoglobulin Type: IgG
Purification: Affinity Chromatography.
Applications: WB, ICC, IHC-P, IHC-F, ELISA
Concentration: 30µg/mL
UOM: 50µg



Sample: Recombinant Surv, Human

[IMMUNOGEN INFORMATION]

Immunogen: Recombinant Surv (Met1~Asp142) expressed in *E.coli*.
USCN Accession No.: rP92045Hu01
Sequence: The target protein is fused with N-terminal His-Tag and its sequence is listed below.
MGHHHHHHS~~G~~SEF-MGAPTLPPAW QPFLKDHRIS TFKNWPFL~~E~~G CACTPERMAE
AGFIHCPTEN EPDLAQCF~~F~~C FKELEGWEPD DDPIEEHKKH SSGCAFLSVK KQFEELTLGE
FLKLD~~R~~ERAK NKIAKETNNK KKEFEETAKK VRR~~A~~IEQLAA MD

Unique product Superb quality Client favorite Nicest service  ISO9001:2008;  ISO13485:2003; 

[ANTIBODY SPECIFICITY]

The antibody is a rabbit polyclonal antibody raised against Surv. It has been selected for its ability to recognize Surv in immunohistochemical staining and western blotting.

[APPLICATIONS]

Western blotting: 1:100-400

Immunocytochemistry in formalin fixed cells: 1:100-500

Immunohistochemistry in formalin fixed frozen section: 1:100-500

Immunohistochemistry in paraffin section: 1:50-200

Enzyme-linked Immunosorbent Assay: 1:100-200

Optimal working dilutions must be determined by end user.

[CONTENTS]

Form & Buffer: Supplied as solution form in PBS, pH7.4, containing 0.02% NaN₃, 50% glycerol.

[STORAGE]

Store at 4°C for frequent use. Stored at -20°C to -80°C in a manual defrost freezer for one year without detectable loss of activity. Avoid repeated freeze-thaw cycles.

[NOTE]

As the antibody has an extremely low concentration, the amounts of usage should be controlled in 50 to 100 times.