

SAA544Rb58

FITC-Linked Guinea pig Anti-Rabbit IgG Antibody
Organism Species: Oryctolagus cuniculus (Rabbit)

Instruction manual

FOR IN VITRO USE AND RESEARCH USE ONLY
NOT FOR USE IN CLINICAL DIAGNOSTIC PROCEDURES

11th Edition (Revised in May, 2016)

[PROPERTIES]

Source: Antibody labeling

Host: Cavia

Purification: Antigen-specific Affinity Chromatography.

Label: FITC

Traits: Liquid

Concentration: 200µg/mL

UOM: 100µg

Applications: WB; IP; IHC-P; IHC-F; ELISA.

[IMMUNOGEN]

Immunogen: IgG, Rabbit

[APPLICATIONS]

Western blotting: 1:2000-10000

Immunoprecipitation: 1:2000-10000

Immunohistochemistry in formalin fixed frozen section: 1:200-1000

Immunohistochemistry in paraffin section: 1:200-1000

Enzyme-linked Immunosorbent Assay: 1:4000-15000

Optimal working dilutions must be determined by end user.

[FORMULATION]

Form & Buffer: Supplied as solution form in PBS, pH7.4, containing 0.02% NaN₃, 50% glycerol.

[STORAGE AND STABILITY]

Storage: Avoid repeated freeze/thaw cycles.

Store at 4°C for frequent use.

Aliquot and store at -20°C for 12 months.

Stability Test: The thermal stability is described by the loss rate. The loss rate was determined by accelerated thermal degradation test, that is, incubate the protein at 37°C for 48h, and no obvious degradation and precipitation were observed. The loss rate is less than 5% within the expiration date under appropriate storage condition.

[IDENTIFICATION]

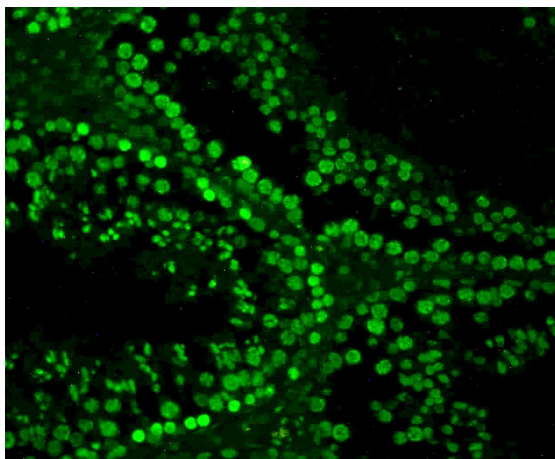


Figure 1: FITC staining on IHC-P, Sample: Rat Testis Tissue

Primary Ab: 3µg/mL Rabbit Anti-Rat H3 Ab (Catalog: PAA285Mi01)

Second Ab: 1:500 Dilution of FITC-Linked Guinea pig Anti-Rabbit IgG Ab (Catalog: SAA544Rb58)