



SAA544Gu08

FITC-Linked Rabbit Anti-Cavia IgG Polyclonal Antibody

Organism Species: Cavia (Guinea pig)

Instruction manual

FOR RESEARCH USE ONLY

NOT FOR USE IN CLINICAL DIAGNOSTIC PROCEDURES

13th Edition (Revised in Aug, 2023)

[PROPERTIES]

Source: Antibody labeling

Host: Rabbit

Purification: Antigen-specific Affinity Chromatography.

Label: FITC

Traits: Liquid

Concentration: 0.6mg/mL

UOM: 1mL

Applications: WB; IHC; ICC; IF.

[IMMUNOGEN]

Immunogen: IgG, Cavia

[APPLICATIONS]

Western blotting: 1:5000-20000

Immunohistochemistry: 1:500-2000

Immunocytochemistry: 1:500-2000

Optimal working dilutions must be determined by end user.

[FORMULATION]

Form & Buffer: Supplied as solution form in PBS , pH 8, 1% BSA , 0.05% Proclin-300.

[STORAGE AND STABILITY]

Storage: Avoid repeated freeze/thaw cycles.

Keep in dark place

Store at 4°C for 12 months.

Stability Test: The thermal stability is described by the loss rate. The loss rate was determined by accelerated thermal degradation test, that is, incubate the protein at 37°C for 48h, and no obvious degradation and precipitation were observed. The loss rate is less than 5% within the expiration date under appropriate storage condition.

Note: As fluorescence can photobleach when exposed to light, so the antibody must be protected from light.

[IDENTIFICATION]

Overlay Spectrum Graph Report

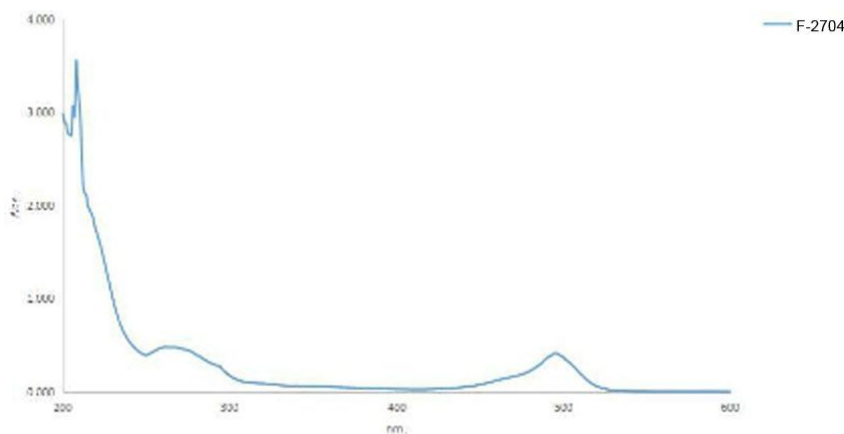


Figure 1: Used in UV-spectrum

Sample: FITC-Linked Rabbit Anti-Guinea IgG Ab (Catalog: SAA544Gu08)

FITC has a spectral characteristic at 495nm, which illustrate the success of FITC conjugation of antibody.

[Important Note]

The kit is designed for in vitro and research use only, we will not be responsible for any issue if the kit was used in clinical diagnostic or any other procedures.



Cloud-Clone Corp.