

**SAA544Mu08**

**FITC-Linked Rabbit Anti-Mouse IgG Antibody**

**Organism Species: Mus musculus (Mouse)**

***Instruction manual***

FOR IN VITRO USE AND RESEARCH USE ONLY

NOT FOR USE IN CLINICAL DIAGNOSTIC PROCEDURES

---

---

11th Edition (Revised in May, 2016)

## **[ PROPERTIES ]**

**Source:** Antibody labeling

**Host:** Rabbit

**Purification:** Antigen-specific Affinity Chromatography.

**Label:** FITC

**Traits:** Liquid

**Concentration:** 200µg/mL

**UOM:** 100µg

**Applications:** WB; IP; IHC-P; IHC-F; ELISA.

## **[ IMMUNOGEN ]**

**Immunogen:** IgG, Mouse

## **[ APPLICATIONS ]**

Western blotting: 1:2000-10000

Immunoprecipitation: 1:2000-10000

Immunohistochemistry in formalin fixed frozen section: 1:200-1000

Immunohistochemistry in paraffin section: 1:200-1000

Enzyme-linked Immunosorbent Assay: 1:4000-15000

Optimal working dilutions must be determined by end user.

## **[ FORMULATION ]**

**Form & Buffer:** Supplied as solution form in PBS, pH7.4, containing 0.02% NaN<sub>3</sub>, 50% glycerol.

## [ STORAGE AND STABILITY ]

**Storage:** Avoid repeated freeze/thaw cycles.

Store at 4°C for frequent use.

Aliquot and store at -20°C for 12 months.

**Stability Test:** The thermal stability is described by the loss rate. The loss rate was determined by accelerated thermal degradation test, that is, incubate the protein at 37°C for 48h, and no obvious degradation and precipitation were observed. The loss rate is less than 5% within the expiration date under appropriate storage condition.

## [ IDENTIFICATION ]

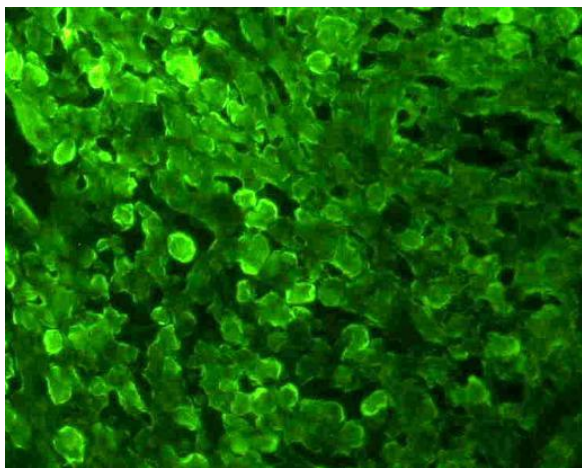


Figure 1: FITC staining on IHC-P, Sample: Human Prostate Gland Tissue

Primary Ab: 3µg/mL Mouse Anti-Human NSE Ab (Catalog: MAA537Hu22)

Second Ab: 1:500 Dilution of FITC-Linked Rabbit Anti-Mouse IgG Ab (Catalog: SAA544Mu08)