

RPB910Ra01 50µg

Recombinant Kallikrein 7 (KLK7)

Organism Species: *Rattus norvegicus* (Rat)

Instruction manual

FOR IN VITRO USE AND RESEARCH USE ONLY

NOT FOR USE IN CLINICAL DIAGNOSTIC PROCEDURES

9th Edition (Revised in Jul, 2013)

[PROPERTIES]

Residues: Arg24~Glu255 (Accession # P36373), with two N-terminal Tags, His-tag and GST-tag.

Host: *E. coli*

Purity: >95%

Endotoxin Level: <1.0EU per 1µg

(determined by the LAL method).

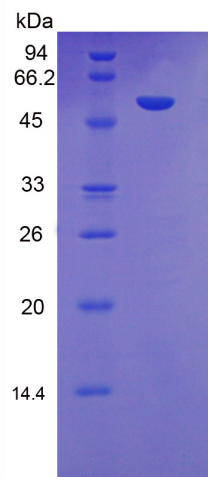
Formulation: Supplied as lyophilized form in PBS, pH7.4, containing 5% sucrose, 0.05% sarcosyl.

Predicted isoelectric point: 6.1

Predicted Molecular Mass: 57.5kDa

Applications: SDS-PAGE; WB; ELISA; IP.

(May be suitable for use in other assays to be determined by the end user.)



15% SDS-PAGE

[USAGE]

Reconstitute in sterile PBS, pH7.2-pH7.4.

[STORAGE AND STABILITY]

Storage: Avoid repeated freeze/thaw cycles.

Store at 2-8°C for one month.

Aliquot and store at -80°C for 12 months.

Stability Test: The thermal stability is described by the loss rate of the target protein. The loss rate was determined by accelerated thermal degradation test, that is, incubate the protein at 37°C for 48h, and no obvious degradation and precipitation were observed. (Referring from China Biological Products Standard, which was calculated by the Arrhenius equation.) The loss of this protein is less than 5% within the expiration date under appropriate storage condition.

[SEQUENCES]

The target protein is fused with two N-terminal Tags, His-tag and GST-tag, its sequence is listed below.

MSPILGYWKI KGLVQPTRL L LEYLEEKYEE HLYERDEGDK WRNKKFELGL EFPNLPPYYID
GDVKLTQSMA IIRYIADKHN MLGGCPKERA EISMLEGAVL DIRYGVSR IA YSKDFETLKV
DFLSKLPEML KMFEDRLCHK TYLNGDHVTH PDFMLYDALD VVLYMDPMCL DAFPKLVCFK
KRIEAIQID KYLKSSKYIA WPLQGWQATF GGGDHPPKSD GSTSGSGHHH HHHSAGLVPR
GSTAIGMKET AAKFERQHM DSPDLGTLEV LFQGPLGS-RVIGGYK CEKNSQPWQV
ALYSFTKYLC GGVLIDPSWV ITAAHCSSNN YQVWLGRNNL LEDEPFAQHR LVSQSFPHPD
YKPFLMRNHT RKP GDDHSNDLMLLHLSQPA DITDGVKVID LPTEEPKVG S TCLASGWGST
KPLIWEFPDD LQCVNIHLLS NEKCIKAYKE KVTDLMLCAG ELEGGKDTCT GDSGGPLLCD
GVLQGITSWG SVPCA KTNMP AIYTKLIKFT SWIKE

[REFERENCES]

1. Chen Y.-P., *et al.* (1988) *Biochemistry* 27:7189-7196.
2. Kato H., *et al.* (1987) *J. Biochem.* 102:1389-1404.
3. Elmoujahed A., *et al.* (1990) *FEBS Lett.* 265:137-140.
4. Brady J.M., MacDonald R.J. (1990) *Arch. Biochem. Biophys.* 278:342-349.