

RPD712Hu01 100µg

Recombinant Killer Cell Immunoglobulin Like Receptor 2DS2 (KIR2DS2)

Organism Species: Homo sapiens (Human)

Instruction manual

FOR IN VITRO USE AND RESEARCH USE ONLY

NOT FOR USE IN CLINICAL DIAGNOSTIC PROCEDURES

9th Edition (Revised in Jul, 2013)

[PROPERTIES]

Residues: His22~Ala304 (Accession # P43631),
with two N-terminal Tags, His-tag and GST-tag.

Host: *E. coli*

Subcellular Location: Cell membrane; Single-pass
type I membrane protein.

Purity: >95%

Endotoxin Level: <1.0EU per 1µg
(determined by the LAL method).

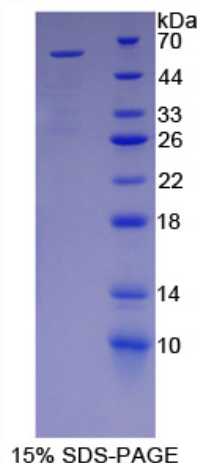
Formulation: Supplied as lyophilized form in PBS,
pH7.4, containing 5% sucrose, 0.01% sarcosyl.

Predicted isoelectric point: 6.2

Predicted Molecular Mass: 62.9kDa

Applications: SDS-PAGE; WB; ELISA; IP.

(May be suitable for use in other assays to be determined by the end user.)



15% SDS-PAGE

[USAGE]

Reconstitute in sterile PBS, pH7.2-pH7.4.

[STORAGE AND STABILITY]

Storage: Avoid repeated freeze/thaw cycles.

Store at 2-8°C for one month.

Aliquot and store at -80°C for 12 months.

Stability Test: The thermal stability is described by the loss rate of the target protein. The loss rate was determined by accelerated thermal degradation test, that is, incubate the protein at 37°C for 48h, and no obvious degradation and precipitation were observed. (Referring from China Biological Products Standard, which was calculated by the Arrhenius equation.) The loss of this protein is less than 5% within the expiration date under appropriate storage condition.

[SEQUENCES]

The target protein is fused with two N-terminal Tags, His-tag and GST-tag, its sequence is listed below.

MSPILGYWKI KGLVQPTRL LLEYLEEKYEE HLYERDEGDK WRNKKFELGL EFPNLPYYID
GDVKLTQSMA IIRYIADKHN MLGGCPKERA EISMLEGAVL DIRYGVSR IA YSKDFETLKV
DFLSKLPEML KMFEDRLCHK TYLNGDHVTH PDFMLYDALD VVLYMDPMCL DAFPKLVCFK
KRIEAIQID KYLKSSKYIA WPLQGWQATF GGGDHPPKSD GSTSGSGHHH HHSAGLVPR
GSTAIGMKET AAAKFERQHM DSPDLGTLEV LFQGPLGS-HEGVHRKPS LLAHPGPLVK
SEETVILQCW SDVRFEHFL HREGKYKDTL HLIGEHHDGV SKANFSIGPM MQDLAGTYRC
YGSVTHSPYQ LSAPSDPLDI VITGLYEKPS LSAQPGPTVL AGESVTLSCS SRSSYDMYHL
SREGEAHERR FSAGPKVNGT FQADFP LGPA THGGTYRCFG SFRDSPYEWS
NSSDLLVSV TGNPSNSWPS PTEPSSKTGNPRHLHVLIGT SVVKIPFTIL LFFLLHRWCS
NKKNAAVMDQ EPAGNRTVNS EDSDEQDHQEVSYA

[REFERENCES]

1. Saulquin X., *et al.* (2003) J. Exp. Med. 197:933-938.
2. Wagtmann N., *et al.* (1995) Immunity 2:439-449.
3. Artavanis-Tsakonas K., *et al.* (2003) J. Immunol. 171:5396-5405.
4. Biassoni R., *et al.* (1996) J. Exp. Med. 183:645-650.