

RPH757Mu01 50ug

Recombinant Klotho (KL)

Organism Species: Mus musculus (Mouse)

Instruction manual

FOR IN VITRO USE AND RESEARCH USE ONLY

NOT FOR USE IN CLINICAL DIAGNOSTIC PROCEDURES

10th Edition (Revised in Jan, 2014)

[PROPERTIES]

Residues: Pro516~Phe955

Tags: N-terminal His-Tag

Accession: O35082

Host: *E. coli*

Subcellular Location: Cell membrane; Secreted.

Single-pass type I membrane protein.

Purity: >95%

Endotoxin Level: <1.0EU per 1µg

(determined by the LAL method).

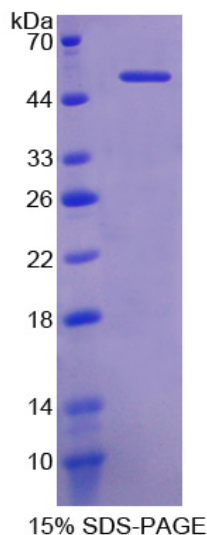
Formulation: Supplied as lyophilized form in 20mM Tris, 150mM NaCl, pH8.0, containing 1mM EDTA, 1mM DTT, 0.01% sarcosyl, 5% trehalose, and preservative.

Predicted isoelectric point: 8.3

Predicted Molecular Mass: 52.7kDa

Applications: SDS-PAGE; WB; ELISA; IP.

(May be suitable for use in other assays to be determined by the end user.)



[USAGE]

Reconstitute in sterile ddH₂O.

[STORAGE AND STABILITY]

Storage: Avoid repeated freeze/thaw cycles.

Store at 2-8°C for one month.

Aliquot and store at -80°C for 12 months.

Stability Test: The thermal stability is described by the loss rate of the target protein. The loss rate was determined by accelerated thermal degradation test, that is, incubate the protein at 37°C for 48h, and no obvious degradation and precipitation were observed. (Referring from China Biological Products Standard, which was calculated by the Arrhenius equation.) The loss of this protein is less than 5% within the expiration date under appropriate storage condition.

[SEQUENCES]

The sequence of the target protein is listed below.

PLEGT FPCDFAWGVV DNYVQVDTTL SQFTDPNVYL WDVHHSKRLI KVDGVVAKKR
KPYCVDFSAI RPQITLLREM RVTHFRFSLD WALILPLGNQ TQVNHTVLHF YRCMISELVH
ANITPVVALW QPAAPHQGLP HALAKHGAW E NPHTALAFAD YANLCFKELG HWVNLWITMN
EPNTRNMTYR AGHLLRAHA LAWHLYDDKF RAAQKGKISI ALQADWIEPA CPFSQNDKEV
AERVLEFDIG WLAEPFGSG DYPRVMRDWL NQKNFLLPY FTEDEKKLVR GSFDLAVSH
YTTILVDWEK EDPMKYNDYL EVQEMTDITW LNSPSQVAVV PWGLRKVLNW LRFKYGDLPM
YVTANGIDDD PHAEQDSLRI YYIKNYVNEA LKAYVLDDIN LCGYFAYSLS DRSAPKSGFY
RYAANQFEPK PSMKHYRKII DSNFG

[REFERENCES]

1. Putaala H., *et al.* (2000) J. Am. Soc. Nephrol. 11:991-1001.
2. Kawachi H., *et al.* (2000) Kidney Int. 57:1949-1961.
3. Ahola H., *et al.* (1999) Am. J. Pathol. 155:907-913.
4. Luimula P., *et al.* (2000) Kidney Int. 58:1461-1468.