

**RPB406Hu01 50µg**

**Recombinant Lipopolysaccharide Binding Protein (LBP)**

**Organism Species: Homo sapiens (Human)**

***Instruction manual***

FOR IN VITRO USE AND RESEARCH USE ONLY

NOT FOR USE IN CLINICAL DIAGNOSTIC PROCEDURES

10th Edition (Revised in Jan, 2014)

## **[ PROPERTIES ]**

**Residues:** Asn27~Val481

**Tags:** N-terminal His-Tag

**Accession:** P18428

**Host:** *E. coli*

**Subcellular Location:** Secreted.

**Purity:** >95%

**Endotoxin Level:** <1.0EU per 1µg

(determined by the LAL method).

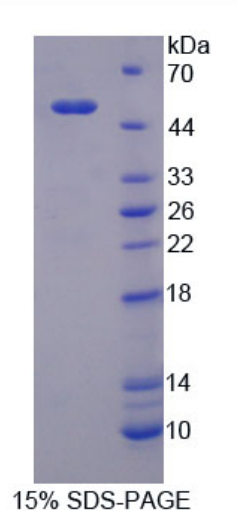
**Formulation:** Supplied as lyophilized form in 10mM PBS, pH7.4, containing 1mM DTT, 5% trehalose, 0.01% sarcosyl and preservative.

**Predicted isoelectric point:** 6.4

**Predicted Molecular Mass:** 52.4kDa

**Applications:** SDS-PAGE; WB; ELISA; IP.

(May be suitable for use in other assays to be determined by the end user.)



## **[ USAGE ]**

Reconstitute in sterile ddH<sub>2</sub>O.

## **[ STORAGE AND STABILITY ]**

**Storage: Avoid repeated freeze/thaw cycles.**

Store at 2-8°C for one month.

Aliquot and store at -80°C for 12 months.

**Stability Test:** The thermal stability is described by the loss rate of the target protein. The loss rate was determined by accelerated thermal degradation test, that is, incubate the protein at 37°C for 48h, and no obvious degradation and precipitation were observed. (Referring from China Biological Products Standard, which was calculated by the Arrhenius equation.) The loss of this protein is less than 5% within the expiration date under appropriate storage condition.

## **[ SEQUENCES ]**

The sequence of the target protein is listed below.

NPGL VARITDKGLQ YAAQEGLLAL QSELLRITLP DFTGDLRIPH VGRGRYEFHS  
LNIHSCCELLH SALRPVPGQG LSLISDSSI RVQGRWKVRK SFFKLQGSFD VSVKGISISV  
NLLLGSESSG RPTVTASSCS SDIADVEVDM SGDLGWLLNL FHNQIESKFQ KVLESRICEM  
IQKSVSSDLQ PYLQTLPVTT EIDSFADIDY SLVEAPRATA QMLEVMFKGE IFHRNHRSPV  
TLAAVMSLP EEHNKVMYFA ISDYVFNTAS LUYHEEGYLN FSITDDMIPP DSNIRLTTKS  
FRPFVRLAR LYPNMNLELQ GSVPSAPLLN FSPGNLSVDP YMEIDAFVLL PSSSKEPVFR  
LSVATNVSAT LTFNTSKITG FLKPGKVKVE LKESKVGLFN AELLEALLNY YILNTFYPKF  
NDKLAEGFPL PLLKRVQLYD LGLQIHKDFL FLGANVQYMR V

## **[ REFERENCES ]**

1. Schumann R.R., *et al.* (1990) Science 249:1429-1431.
2. Wilde C.G., *et al.* (1994) J. Biol. Chem. 269:17411-17416.
3. Hubacek J.A., *et al.* (1997) Biochem. Biophys. Res. Commun. 236:427-430.
4. Kirschning C.J., *et al.* (1997) Genomics 46:416-425.