

MAG369Hu22

Monoclonal Antibody to ATPase, Na⁺/K⁺ Transporting Alpha 1 Polypeptide (ATP1a1)

Organism Species: *Homo sapiens* (Human)

Instruction manual

FOR RESEARCH USE ONLY

NOT FOR USE IN CLINICAL DIAGNOSTIC PROCEDURES

13th Edition (Revised in Aug, 2023)

[PROPERTIES]

Source: Monoclonal antibody preparation

Host: Mouse

Antibody isotype: IgG2b Kappa

Purification: Protein A + Protein G affinity chromatography

Clone number: C209

Traits: Liquid

Concentration: 1mg/mL

UOM: 100µL

Cross Reactivity: Mouse;Rat;Rabbit;Canine;Porcine;Bovine;Caprine;Ovine;Equine

Applications: WB; IHC; ICC; IP.

[IMMUNOGEN]

Immunogen: Recombinant ATP1a1 (His493~Ala660) expressed in *E.coli*

Accession No.: RPG369Hu01

[APPLICATIONS]

Western blotting: 0.01-2µg/mL;

Immunohistochemistry: 3-20µg/mL;

Immunocytochemistry: 5-20µg/mL;

Optimal working dilutions must be determined by end user.

[FORMULATION]

Form & Buffer: Supplied as solution form in PBS, pH7.4, containing 0.02% NaN₃, 50% glycerol.

[STORAGE AND STABILITY]

Storage: Avoid repeated freeze/thaw cycles.

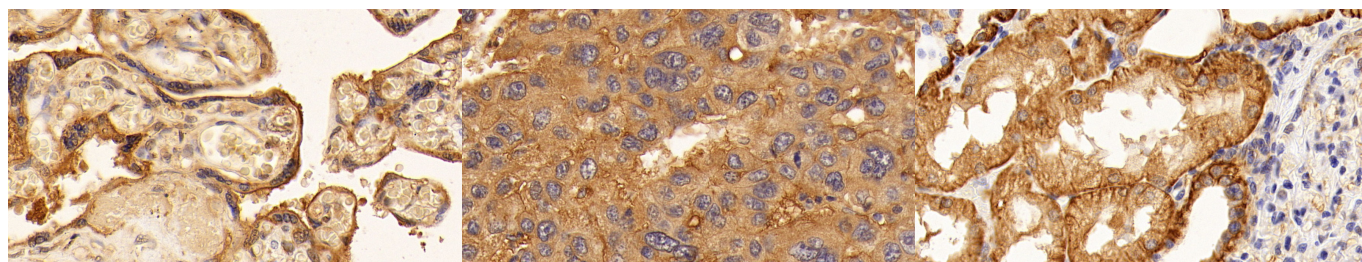
Store at 4°C for frequent use.

Aliquot and store at -20°C for 24 months.

Stability Test: The thermal stability is described by the loss rate. The loss rate was determined

by accelerated thermal degradation test, that is, incubate the protein at 37°C for 48h, and no obvious degradation and precipitation were observed. The loss rate is less than 5% within the expiration date under appropriate storage condition.

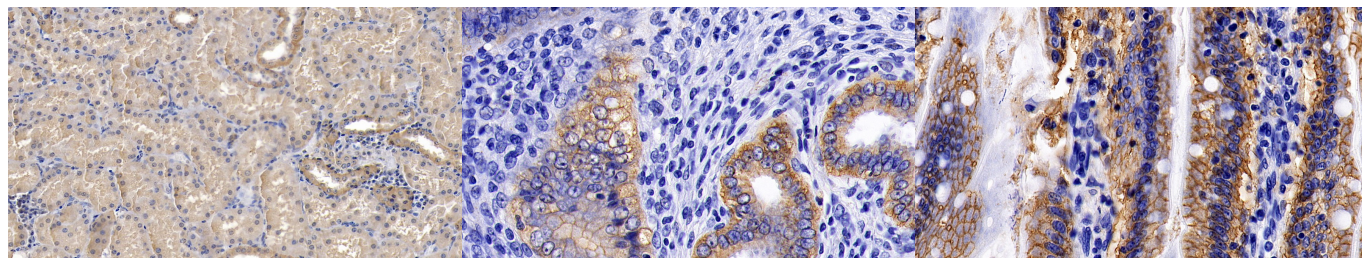
[IDENTIFICATION]



DAB staining on IHC-P; Sample:
Human Placenta Tissue; Primary Ab:
10ug/ml Mouse Anti-Human ATP1a1
Antibody Second Ab: 2µg/mL HRP-
Linked Caprine Anti-Mouse IgG
Polyclonal Antibody (Catalog:
SAA544Mu19)

DAB staining on IHC-P;
Sample: Human Liver cancer Tissue;
Primary Ab: 10ug/ml Mouse Anti-
Human ATP1a1 Antibody
Second Ab: 2µg/mL HRP-Linked
Caprine Anti-Mouse IgG Polyclonal
Antibody
(Catalog: SAA544Mu19)

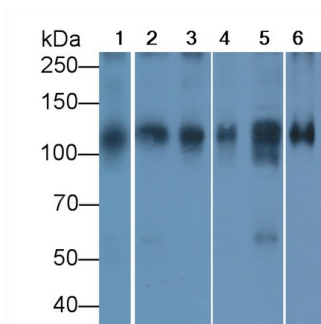
DAB staining on IHC-P;
Sample: Human Kidney Tissue;
Primary Ab: 10ug/ml Mouse Anti-
Human ATP1a1 Antibody
Second Ab: 2µg/mL HRP-Linked
Caprine Anti-Mouse IgG Polyclonal
Antibody
(Catalog: SAA544Mu19)



DAB staining on IHC-P;
Sample: Porcine Kidney Tissue;
Primary Ab: 20µg/ml Mouse Anti-
Human ATP1a1 Antibody
Second Ab: 2µg/mL HRP-Linked
Caprine Anti-Mouse IgG Polyclonal
Antibody
(Catalog: SAA544Mu19)

DAB staining on IHC-P;
Sample: Rat Uterus Tissue;
Primary Ab: 3ug/ml Mouse Anti-Human
ATP1a1 Antibody
Second Ab: 2µg/mL HRP-Linked
Caprine Anti-Mouse IgG Polyclonal
Antibody
(Catalog: SAA544Mu19)

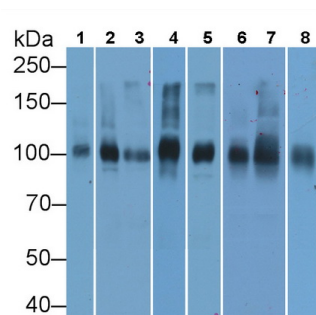
DAB staining on IHC-P;
Sample: Rat Small intestine Tissue;
Primary Ab: 3ug/ml Mouse Anti-Human
ATP1a1 Antibody
Second Ab: 2µg/mL HRP-Linked
Caprine Anti-Mouse IgG Polyclonal
Antibody
(Catalog: SAA544Mu19)



Western Blot; Sample: Lane1: Mouse Heart lysate; Lane2: Porcine Heart lysate; Lane3: Rat Heart lysate; Lane4: Bovine Heart lysate; Lane5: Rabbit Heart lysate; Lane6: Porcine Cerebrum lysate

Primary Ab: 2 μ g/ml Mouse Anti-Human ATP1a1 Antibody

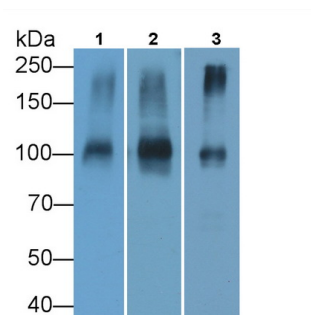
Second Ab: 0.2 μ g/mL HRP-Linked Caprine Anti-Mouse IgG Polyclonal Antibody (Catalog: SAA544Mu19)



Western Blot; Sample: Lane1: Caprine Liver lysate; Lane2: Caprine Small intestine lysate; Lane3: Caprine Colon lysate; Lane4: Caprine Salivary gland lysate; Lane5: Caprine Thyroid lysate; Lane6: Bovine Kidney lysate; Lane7: Bovine Cerebrum lysate; Lane8: Bovine Heart lysate

Primary Ab: 2 μ g/ml Mouse Anti-Human ATP1a1 Antibody

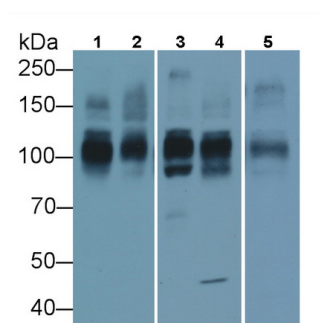
Second Ab: 0.2 μ g/mL HRP-Linked Caprine Anti-Mouse IgG Polyclonal Antibody (Catalog: SAA544Mu19)



Western Blot; Sample: Lane1: Canine Liver lysate; Lane2: Equine Liver lysate; Lane3: Equine Skeletal muscle lysate

Primary Ab: 2 μ g/ml Mouse Anti-Human ATP1a1 Antibody

Second Ab: 0.2 μ g/mL HRP-Linked Caprine Anti-Mouse IgG Polyclonal Antibody (Catalog: SAA544Mu19)



Western Blot; Sample: Lane1: Porcine Adrenal gland lysate; Lane2: Porcine Liver lysate; Lane3: Porcine Heart lysate; Lane4: Porcine Trachea lysate; Lane5: Porcine Small intestine lysate

Primary Ab: 1 μ g/ml Mouse Anti-Human ATP1a1 Antibody

Second Ab: 0.2µg/mL HRP-Linked

Caprine Anti-Mouse IgG Polyclonal

Antibody

(Catalog: SAA544Mu19)

[IMPORTANT NOTE]

The kit is designed for research use only, we will not be responsible for any issue if the kit was used in clinical diagnostic or any other procedures.