

MAA605Hu23

Monoclonal Antibody to Adiponectin (ADPN)

Organism Species: *Homo sapiens (Human)*

Instruction manual

FOR RESEARCH USE ONLY

NOT FOR USE IN CLINICAL DIAGNOSTIC PROCEDURES

13th Edition (Revised in Aug, 2023)

[PROPERTIES]

Source: Monoclonal antibody preparation

Host: Mouse

Antibody isotype: IgG2b Kappa

Purification: Protein A + Protein G affinity chromatography

Clone number: H2

Traits: Liquid

Concentration: 0.92mg/mL

UOM: 100µL

Cross Reactivity: Porcine

Applications: WB; IHC; ICC; IP.

[IMMUNOGEN]

Immunogen: Recombinant ADPN (Ala108~Asn244) expressed in *E.coli*

Accession No.: RPA605Hu01

[APPLICATIONS]

Western blotting: 0.01-2µg/mL;

Immunohistochemistry: 5-30µg/mL;

Optimal working dilutions must be determined by end user.

[FORMULATION]

Form & Buffer: Supplied as solution form in 0.01M PBS, pH7.4, containing 0.05% Proclin-300, 50% glycerol.

[STORAGE AND STABILITY]

Storage: Avoid repeated freeze/thaw cycles.

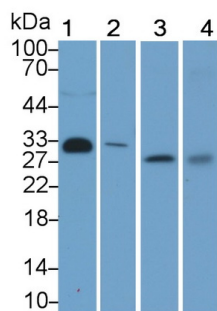
Store at 4°C for frequent use.

Aliquot and store at -20°C for 24 months.

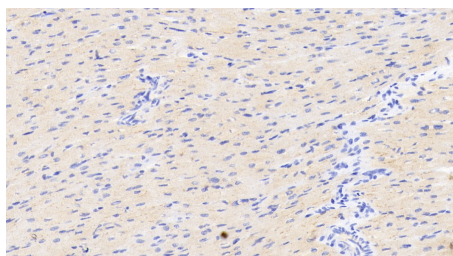
Stability Test: The thermal stability is described by the loss rate. The loss rate was determined by accelerated thermal degradation test, that is, incubate the protein at 37°C for 48h, and no

obvious degradation and precipitation were observed. The loss rate is less than 5% within the expiration date under appropriate storage condition.

[IDENTIFICATION]

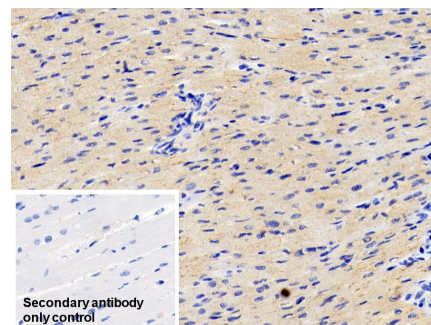


Western Blot; Sample: Lane1: Human Serum; Lane2: Porcine Skeletal muscle lysate; Lane3: Hela cell lysate; Lane4: HepG2 cell lysate Primary Ab: 2µg/ml Mouse Anti-Human ADP Antibody Second Ab: 0.2µg/mL HRP-Linked Caprine Anti-Mouse IgG Polyclonal Antibody (Catalog: SAA544Mu19)



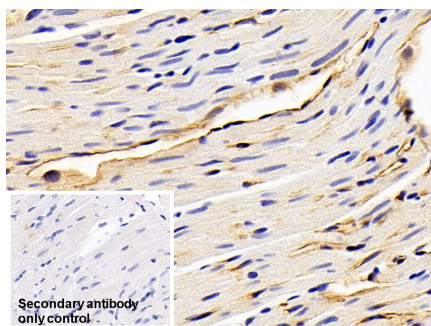
DAB staining on IHC-P; Sample:

Human Cardiac Muscle Tissue; Primary Ab: 20µg/ml Mouse Anti-Human ADP Antibody Second Ab: 2µg/mL HRP-Linked Caprine Anti-Mouse IgG Polyclonal Antibody (Catalog: SAA544Mu19)



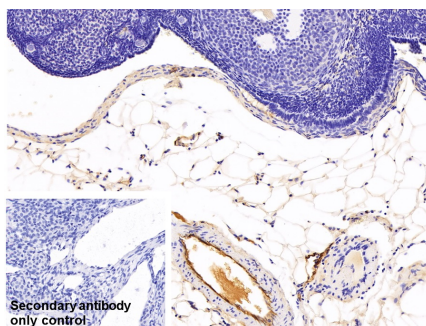
DAB staining on IHC-P;

Sample: Human Cardiac Muscle Tissue Primary Ab: 20µg/ml Mouse Anti-Human ADPN Antibody Control: Used PBS instead of primary antibody Second Ab: 2µg/ml HRP-Linked Caprine Anti-Mouse IgG Polyclonal Antibody (Catalog: SAA544Mu19)



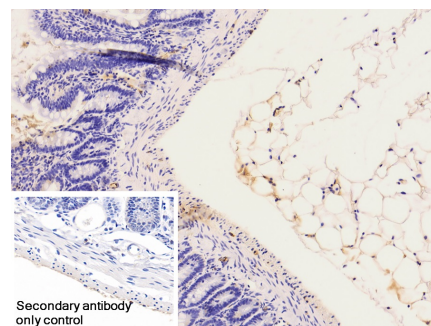
DAB staining on IHC-P;

Sample: Rat Cardiac Muscle Tissue Primary Ab: 30µg/ml Mouse Anti-Human ADPN Antibody Control: Used PBS instead of primary antibody Second Ab: 2µg/ml HRP-Linked



DAB staining on IHC-P;

Sample: Rat Ovary Tissue Primary Ab: 30µg/ml Mouse Anti-Human ADPN Antibody Control: Used PBS instead of primary antibody Second Ab: 2µg/ml HRP-Linked



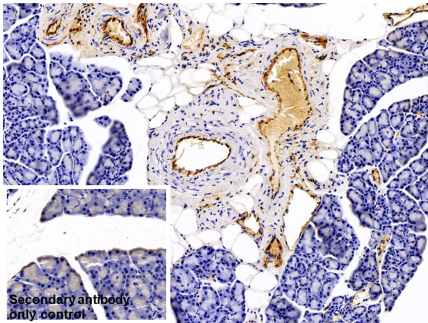
DAB staining on IHC-P;

Sample: Rat Colon Tissue Primary Ab: 30µg/ml Mouse Anti-Human ADPN Antibody Control: Used PBS instead of primary antibody Second Ab: 2µg/ml HRP-Linked

Caprine Anti-Mouse IgG Polyclonal
Antibody
(Catalog: SAA544Mu19)

Caprine Anti-Mouse IgG Polyclonal
Antibody
(Catalog: SAA544Mu19)

Caprine Anti-Mouse IgG Polyclonal
Antibody
(Catalog: SAA544Mu19)



DAB staining on IHC-P;

Sample: Rat Pancreas Tissue

Primary Ab: 30µg/ml Mouse Anti-

Human ADPN Antibody

Control: Used PBS instead of primary
antibody

Second Ab: 2?g/ml HRP-Linked

Caprine Anti-Mouse IgG Polyclonal

Antibody

(Catalog: SAA544Mu19)

[IMPORTANT NOTE]

The kit is designed for research use only, we will not be responsible for any issue if the kit was used in clinical diagnostic or any other procedures.