

MAB340Hu21

Monoclonal Antibody to Beta Actin (ACTB)

Organism Species: *Homo sapiens (Human)*

Instruction manual

FOR RESEARCH USE ONLY

NOT FOR USE IN CLINICAL DIAGNOSTIC PROCEDURES

13th Edition (Revised in Aug, 2023)

[PROPERTIES]

Source: Monoclonal antibody preparation

Host: Mouse

Antibody isotype: IgG2b Kappa

Purification: Protein A + Protein G affinity chromatography

Clone number: C2

Traits: Liquid

Concentration: 1mg/ml

UOM: 100µl

Cross Reactivity: N/A

Applications: WB; IHC; ICC; IP.

[IMMUNOGEN]

Immunogen: Recombinant ACTB (Met1~Phe375) expressed in *E.coli*

Accession No.: RPB340Hu01

[APPLICATIONS]

Western blotting: 0.01-3µg/mL;

Immunohistochemistry: 5-20µg/mL;

Immunocytochemistry: 5-30µg/mL;

Optimal working dilutions must be determined by end user.

[FORMULATION]

Form & Buffer: Supplied as solution form in PBS, pH7.4, containing 0.02% NaN₃, 50% glycerol.

[STORAGE AND STABILITY]

Storage: Avoid repeated freeze/thaw cycles.

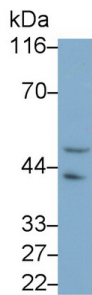
Store at 4°C for frequent use.

Aliquot and store at -20°C for 24 months.

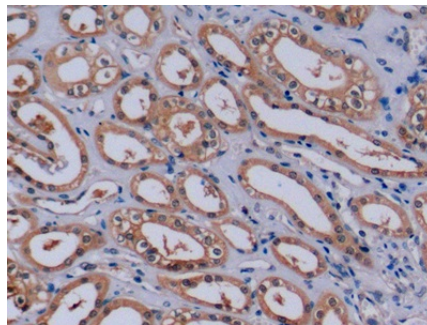
Stability Test: The thermal stability is described by the loss rate. The loss rate was determined

by accelerated thermal degradation test, that is, incubate the protein at 37°C for 48h, and no obvious degradation and precipitation were observed. The loss rate is less than 5% within the expiration date under appropriate storage condition.

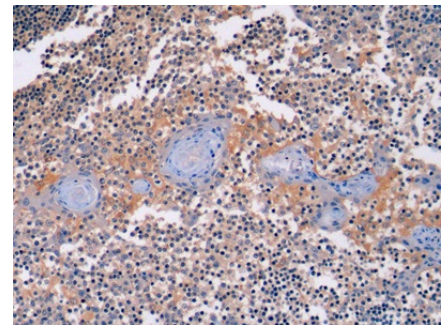
[IDENTIFICATION]



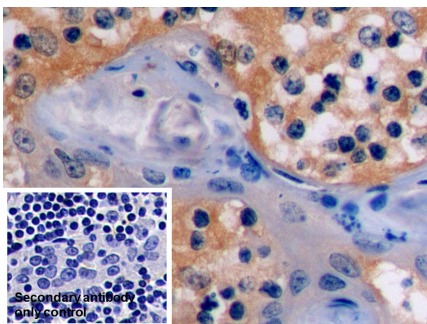
Western Blot; Sample: Hela cell lysate
 Primary Ab: 0.1µg/ml Mouse Anti-Human IGF1 Antibody
 Second Ab: 0.2µg/mL HRP-Linked Caprine Anti-Mouse IgG Polyclonal Antibody
 (Catalog: SAA544Mu19)



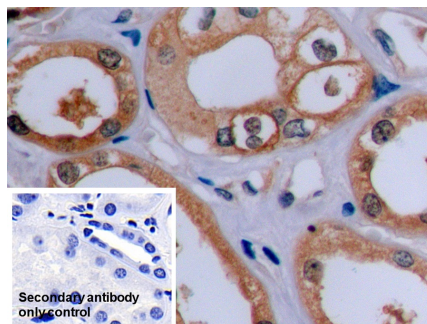
DAB staining on IHC-P; Sample: Human Kidney Tissue; Primary Ab: 10µg/ml Mouse Anti-Human ACTb Antibody Second Ab: 2µg/mL HRP-Linked Caprine Anti-Mouse IgG Polyclonal Antibody (Catalog: SAA544Mu19)



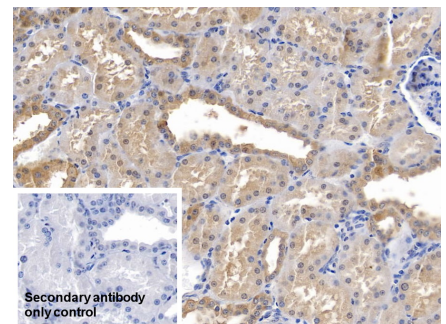
DAB staining on IHC-P; Sample: Human Tonsil Tissue; Primary Ab: 10µg/ml Mouse Anti-Human ACTb Antibody Second Ab: 2µg/mL HRP-Linked Caprine Anti-Mouse IgG Polyclonal Antibody (Catalog: SAA544Mu19)



DAB staining on IHC-P; Sample: Human Tonsil Tissue Primary Ab: 10µg/ml Mouse Anti-Human ACTB Antibody Control: Used PBS instead of primary antibody Second Ab: 2µg/ml HRP-Linked Caprine Anti-Mouse IgG Polyclonal



DAB staining on IHC-P; Sample: Human Kidney Tissue Primary Ab: 10µg/ml Mouse Anti-Human ACTB Antibody Control: Used PBS instead of primary antibody Second Ab: 2µg/ml HRP-Linked Caprine Anti-Mouse IgG Polyclonal

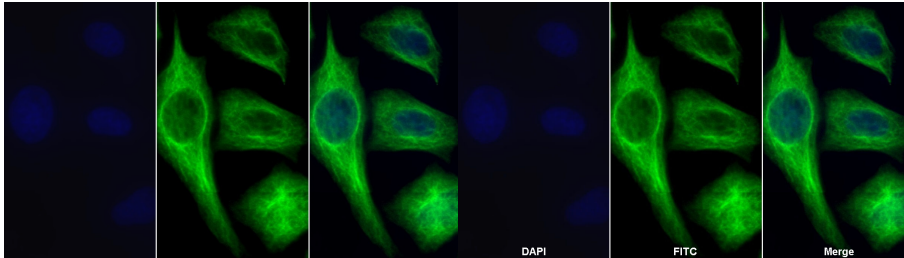


DAB staining on IHC-P; Sample: Porcine Kidney Tissue Primary Ab: 20µg/ml Mouse Anti-Human ACTB Antibody Control: Used PBS instead of primary antibody Second Ab: 2µg/ml HRP-Linked Caprine Anti-Mouse IgG Polyclonal

Antibody
(Catalog: SAA544Mu19)

Antibody
(Catalog: SAA544Mu19)

Antibody
(Catalog: SAA544Mu19)



FITC staining on IF;

FITC staining on IF;

Sample: Human Hela cell;

Sample: Hela cell

Primary Ab: 30ug/ml Mouse Anti-
Human ACTB Antibody

Primary Ab: 30µg/ml Mouse Anti-
Human ACTB Antibody

Second Ab: 2µg/ml FITC-Linked

Second Ab: 2µg/ml FITC-Linked

Caprine Anti-Mouse IgG Polyclonal
Antibody

Caprine Anti-Mouse IgG Polyclonal
Antibody

(Catalog: SAA544Mu18)

(Catalog: SAA544Mu11)

[IMPORTANT NOTE]

The kit is designed for research use only, we will not be responsible for any issue if the kit was used in clinical diagnostic or any other procedures.