

MAB340Mi22

Monoclonal Antibody to Beta Actin (ACTB)

Organism Species: *Homo sapiens* (Human), *Mus musculus* (Mouse), *Rattus norvegicus* (Rat), *Canis familiaris*; Canine (Dog), *Sus scrofa*; Porcine (Pig), *Bos taurus*; Bovine (Cattle)

Instruction manual

FOR RESEARCH USE ONLY

NOT FOR USE IN CLINICAL DIAGNOSTIC PROCEDURES

13th Edition (Revised in Aug, 2023)

[PROPERTIES]

Source: Monoclonal antibody preparation

Host: Mouse

Antibody isotype: IgG2b Kappa

Purification: Protein A + Protein G affinity chromatography

Clone number: C5

Traits: Liquid

Concentration: 1mg/mL

UOM: 20µL

Cross Reactivity: Rabbit

Applications: WB; IHC; ICC; IP.

[IMMUNOGEN]

Immunogen: Recombinant ACTB (Met1~Phe375) expressed in *E.coli*

Accession No.: RPB340Mi01

[APPLICATIONS]

Western blotting: 0.01-3µg/mL;

Immunohistochemistry: 5-20µg/mL;

Immunocytochemistry: 5-20µg/mL;

Optimal working dilutions must be determined by end user.

[FORMULATION]

Form & Buffer: Supplied as solution form in 0.01M PBS, pH7.4, containing 0.05% Proclin-300, 50% glycerol.

[STORAGE AND STABILITY]

Storage: Avoid repeated freeze/thaw cycles.

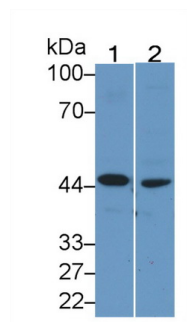
Store at 4°C for frequent use.

Aliquot and store at -20°C for 24 months.

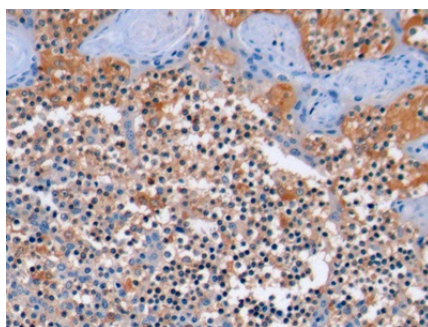
Stability Test: The thermal stability is described by the loss rate. The loss rate was determined

by accelerated thermal degradation test, that is, incubate the protein at 37°C for 48h, and no obvious degradation and precipitation were observed. The loss rate is less than 5% within the expiration date under appropriate storage condition.

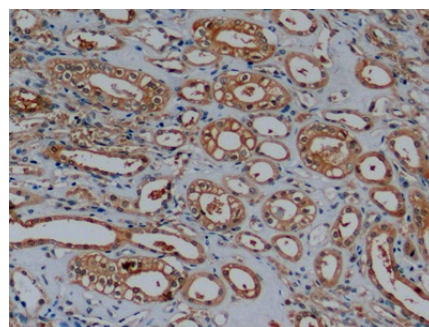
[IDENTIFICATION]



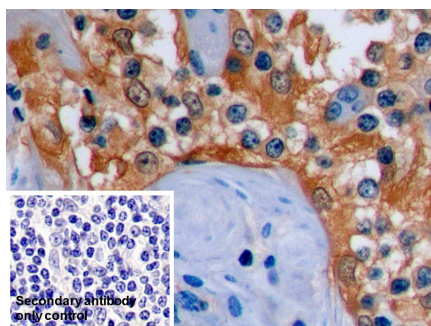
Western Blot; Sample: Lane1: Human Lung lysate; Lane2: HeLa cell lysate
Primary Ab: 3µg/ml Mouse Anti-Multi-species ACTb Antibody Second Ab: 0.2µg/mL HRP-Linked Caprine Anti-Mouse IgG Polyclonal Antibody
(Catalog: SAA544Mu19)



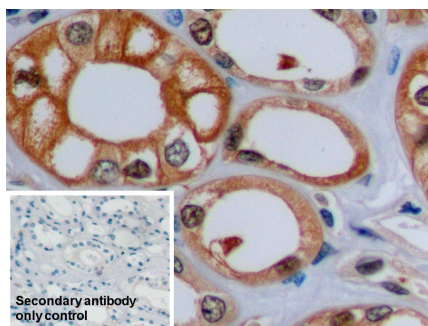
DAB staining on IHC-P; Sample: Human Tonsil Tissue; Primary Ab: 10µg/ml Mouse Anti-Multi-species ACTb Antibody Second Ab: 2µg/mL HRP-Linked Caprine Anti-Mouse IgG Polyclonal Antibody
(Catalog: SAA544Mu19)



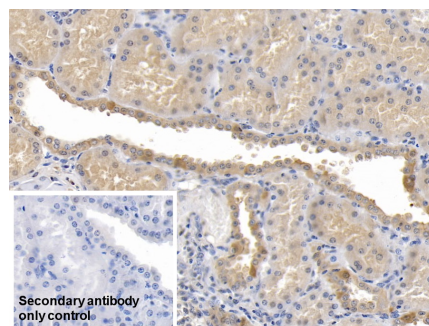
DAB staining on IHC-P; Sample: Human Kidney Tissue; Primary Ab: 20µg/ml Mouse Anti-Multi-species ACTb Antibody Second Ab: 2µg/mL HRP-Linked Caprine Anti-Mouse IgG Polyclonal Antibody
(Catalog: SAA544Mu19)



DAB staining on IHC-P; Sample: Human Tonsil Tissue
Primary Ab: 10µg/ml Mouse Anti-Multi-species ACTB Antibody
Control: Used PBS instead of primary antibody
Second Ab: 2µg/ml HRP-Linked Caprine Anti-Mouse IgG Polyclonal



DAB staining on IHC-P; Sample: Human Kidney Tissue
Primary Ab: 10µg/ml Mouse Anti-Multi-species ACTB Antibody
Control: Used PBS instead of primary antibody
Second Ab: 2µg/ml HRP-Linked Caprine Anti-Mouse IgG Polyclonal

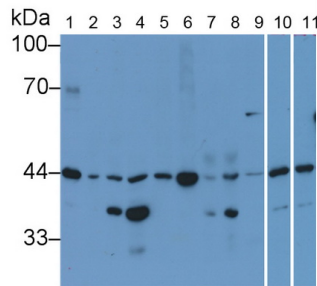


DAB staining on IHC-P; Sample: Porcine Kidney Tissue
Primary Ab: 20µg/ml Mouse Anti-Multi-species ACTB Antibody
Control: Used PBS instead of primary antibody
Second Ab: 2µg/ml HRP-Linked Caprine Anti-Mouse IgG Polyclonal

Antibody
(Catalog: SAA544Mu19)

Antibody
(Catalog: SAA544Mu19)

Antibody
(Catalog: SAA544Mu19)



Western Blot; Sample: Lane1: Human Lung lysate; Lane2: 293T cell lysate; Lane3: Rat Liver lysate; Lane4: Rat Kidney lysate; Lane5: Porcine Liver lysate; Lane6: Porcine Kidney lysate; Lane7: Mouse Liver lysate; Lane8: Mouse Kidney lysate; Lane9: Rabbit Liver lysate; Lane10: Bovine Kidney lysate; Lane11: Canine Kidney lysate
Primary Ab: 1µg/ml Mouse Anti-Multi-species ACTb Antibody
Second Ab: 0.2µg/mL HRP-Linked Caprine Anti-Mouse IgG Polyclonal Antibody
(Catalog: SAA544Mu19)

[**IMPORTANT NOTE**]

The kit is designed for research use only, we will not be responsible for any issue if the kit was used in clinical diagnostic or any other procedures.