

MAC977Hu22

**Monoclonal Antibody to Carcinoembryonic Antigen Related Cell Adhesion Molecule 1
(CEACAM1)**

Organism Species: *Homo sapiens (Human)*

Instruction manual

FOR RESEARCH USE ONLY

NOT FOR USE IN CLINICAL DIAGNOSTIC PROCEDURES

13th Edition (Revised in Aug, 2023)

[PROPERTIES]

Source: Monoclonal antibody preparation

Host: Mouse

Antibody isotype: IgG1 Kappa

Purification: Protein A + Protein G affinity chromatography

Clone number: C4

Traits: Liquid

Concentration: 1mg/mL

UOM: 100µL

Cross Reactivity: Rat;Cavia;Porcine;Ovine;Equine

Applications: WB; IHC

[IMMUNOGEN]

Immunogen: Recombinant CEACAM1 (Gln35~Leu321) expressed in *E.coli*

Accession No.: RPC977Hu01

[APPLICATIONS]

Western blotting: 0.01-2µg/mL;

Immunohistochemistry: 5-20µg/mL;

Optimal working dilutions must be determined by end user.

[FORMULATION]

Form & Buffer: Supplied as solution form in 0.01M PBS, pH7.4, containing 0.05% Proclin-300, 50% glycerol.

[STORAGE AND STABILITY]

Storage: Avoid repeated freeze/thaw cycles.

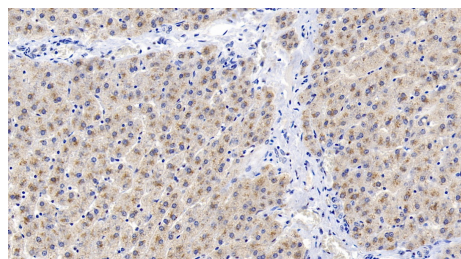
Store at 4°C for frequent use.

Aliquot and store at -20°C for 24 months.

Stability Test: The thermal stability is described by the loss rate. The loss rate was determined by accelerated thermal degradation test, that is, incubate the protein at 37°C for 48h, and no

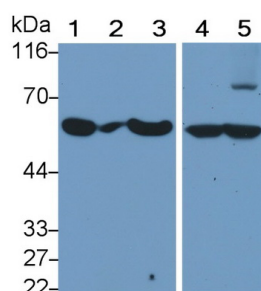
obvious degradation and precipitation were observed. The loss rate is less than 5% within the expiration date under appropriate storage condition.

[IDENTIFICATION]

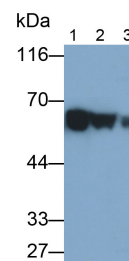


DAB staining on IHC-P; Sample:

Human Liver Tissue; Primary Ab:
20µg/ml Mouse Anti-Human CEACAM1
Antibody Second Ab: 2µg/mL HRP-
Linked Caprine Anti-Mouse IgG
Polyclonal Antibody (Catalog:
SAA544Mu19)



Western Blot; Sample: Lane1: Porcine
Liver lysate; Lane2: Rat Liver lysate;
Lane3: Equine Liver lysate; Lane4:
Caprine Liver lysate; Lane5: Cavia
Liver lysate
Primary Ab: 1ug/ml Mouse Anti-Human
CEACAM1 Antibody
Second Ab: 0.2µg/mL HRP-Linked
Caprine Anti-Mouse IgG Polyclonal
Antibody
(Catalog: SAA544Mu19)



Western Blot; Samples: Lane1: Equine
Liver lysate; Lane2: Cavia Liver lysate;
Lane3: Ovine Liver lysate;
Primary Ab: 0.6µg/ml Mouse Anti-
Human CEACAM1 Antibody
Second Ab: 0.2µg/ml HRP-Linked
Caprine Anti-Mouse IgG Polyclonal
Antibody
(Catalog: SAA544Mu19)

[IMPORTANT NOTE]

The kit is designed for research use only, we will not be responsible for any issue if the kit was used in clinical diagnostic or any other procedures.