

MAA626Ra21

Monoclonal Antibody to Caspase 3 (CASP3)

Organism Species: Rattus norvegicus (Rat)

Instruction manual

FOR IN VITRO USE AND RESEARCH USE ONLY
NOT FOR USE IN CLINICAL DIAGNOSTIC PROCEDURES

9th Edition (Revised in Jul, 2013)

[PRODUCT INFORMATION]

Immunogen: CASP3, Rat

Clonality: Monoclonal

Clone number: G2

Host: Mouse

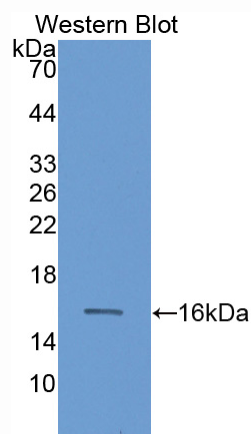
Immunoglobulin Type: IgG

Purification: Affinity Chromatography.

Applications: WB, ICC, IHC-P, IHC-F, ELISA

Concentration: 500µg/mL

UOM: 200µg



Sample: Recombinant CASP3, Rat

[IMMUNOGEN INFORMATION]

Immunogen: Recombinant CASP3 (Ser29~Asp175) expressed in *E.coli*.

Accession No.: RPA626Ra01

Sequence: The target protein is fused with two N-terminal Tags, His-tag and T7-tag and its sequence is listed below.

MGSSHHHHHH SSGLVPRGSH MASMTGGQQM GRGSEF- SG IYLDSSYKMD YPEMGLCIII
NNKNFHKSTGMSARNGTDVD AANLRETFMA LKYEVNRKND LTREEIMELM DSVSKEDHSK
RSSFVCVILS HGDEGVIFGT NGPVDLKKLT SFFRGDYCRS LTGKPKLFII QACRGTELDC
GIETD

[ANTIBODY SPECIFICITY]

The antibody is a mouse monoclonal antibody raised against CASP3. It has been selected for its ability to recognize CASP3 in immunohistochemical staining and western blotting.

[APPLICATIONS]

Western blotting: 1:100-400

Immunocytochemistry in formalin fixed cells: 1:100-500

Immunohistochemistry in formalin fixed frozen section: 1:100-500

Immunohistochemistry in paraffin section: 1:50-200

Enzyme-linked Immunosorbent Assay: 1:100-200

Optimal working dilutions must be determined by end user.

[CONTENTS]

Form & Buffer: Supplied as solution form in PBS, pH7.4, containing 0.02% NaN₃, 50% glycerol.

[STORAGE]

Store at 4°C for frequent use. Stored at -20°C to -80°C in a manual defrost freezer for one year without detectable loss of activity. Avoid repeated freeze-thaw cycles.