

**MAC340Bo22**

**Monoclonal Antibody to Caspase 6 (CASP6)**

**Organism Species: *Bos taurus*; Bovine (Cattle)**

***Instruction manual***

FOR RESEARCH USE ONLY

NOT FOR USE IN CLINICAL DIAGNOSTIC PROCEDURES

---

13th Edition (Revised in Aug, 2023)

## **[ PROPERTIES ]**

**Source:** Monoclonal antibody preparation

**Host:** Mouse

**Antibody isotype:** IgG1 Kappa

**Purification:** Protein A + Protein G affinity chromatography

**Clone number:** C1

**Traits:** Liquid

**Concentration:** 1mg/mL

**UOM:** 100µL

**Cross Reactivity:** N/A

**Applications:** WB; IHC

## **[ IMMUNOGEN ]**

**Immunogen:** Recombinant CASP6 (Ala194~Lys293) expressed in *E.coli*

**Accession No.:** RPC340Bo02

## **[ APPLICATIONS ]**

Western blotting: 0.01-3µg/mL;

Immunohistochemistry: 5-30µg/mL;

Optimal working dilutions must be determined by end user.

## **[ FORMULATION ]**

**Form & Buffer:** Supplied as solution form in 0.01M PBS, pH7.4, containing 0.05% Proclin-300, 50% glycerol.

## **[ STORAGE AND STABILITY ]**

**Storage:** Avoid repeated freeze/thaw cycles.

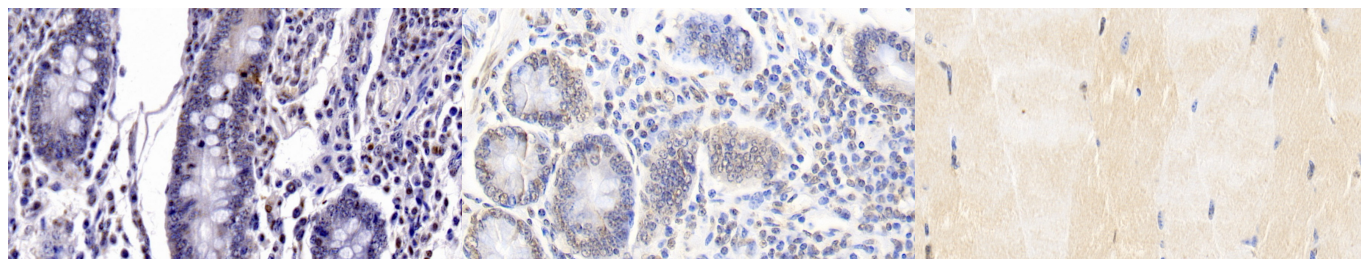
Store at 4°C for frequent use.

Aliquot and store at -20°C for 24 months.

**Stability Test:** The thermal stability is described by the loss rate. The loss rate was determined by accelerated thermal degradation test, that is, incubate the protein at 37°C for 48h, and no

obvious degradation and precipitation were observed. The loss rate is less than 5% within the expiration date under appropriate storage condition.

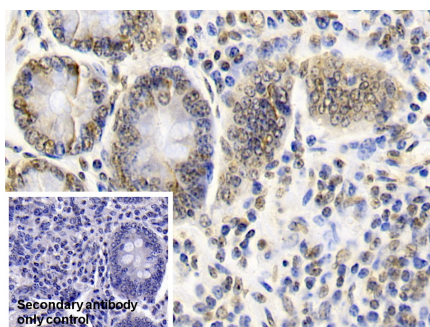
## [ IDENTIFICATION ]



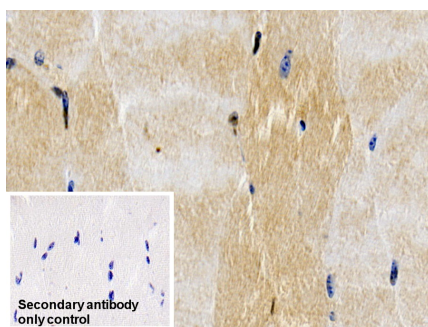
DAB staining on IHC-P; Samples:  
Bovine Small intestine Tissue; Primary  
Ab: 30ug/ml Mouse Anti-Bovine CASP6  
Antibody Second Ab: 2µg/mL HRP-  
Linked Caprine Anti-Mouse IgG  
Polyclonal Antibody (Catalog:  
SAA544Mu19)

DAB staining on IHC-P;  
Sample: Bovine Colon Tissue;  
Primary Ab: 20µg/ml Mouse Anti-  
Bovine CASP6 Antibody  
Second Ab: 2µg/mL HRP-Linked  
Caprine Anti-Mouse IgG Polyclonal  
Antibody  
(Catalog: SAA544Mu19)

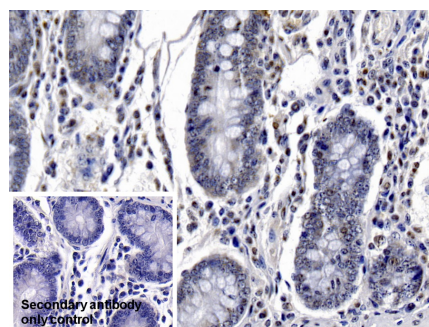
DAB staining on IHC-P;  
Sample: Bovine Skeletal muscle  
Tissue;  
Primary Ab: 20µg/ml Mouse Anti-  
Bovine CASP6 Antibody  
Second Ab: 2µg/mL HRP-Linked  
Caprine Anti-Mouse IgG Polyclonal  
Antibody  
(Catalog: SAA544Mu19)



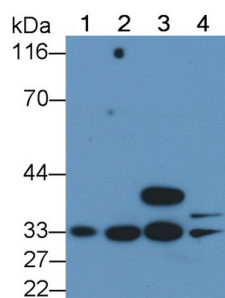
DAB staining on IHC-P;  
Sample: Bovine Colon Tissue  
Primary Ab: 20µg/ml Mouse Anti-  
Bovine CASP6 Antibody  
Control: Used PBS instead of primary  
antibody  
Second Ab: 2µg/ml HRP-Linked  
Caprine Anti-Mouse IgG Polyclonal  
Antibody  
(Catalog: SAA544Mu19)



DAB staining on IHC-P;  
Sample: Bovine Skeletal muscle Tissue  
Primary Ab: 20µg/ml Mouse Anti-  
Bovine CASP6 Antibody  
Control: Used PBS instead of primary  
antibody  
Second Ab: 2µg/ml HRP-Linked  
Caprine Anti-Mouse IgG Polyclonal  
Antibody  
(Catalog: SAA544Mu19)



DAB staining on IHC-P;  
Sample: Bovine Small intestine Tissue  
Primary Ab: 20µg/ml Mouse Anti-  
Bovine CASP6 Antibody  
Control: Used PBS instead of primary  
antibody  
Second Ab: 2µg/ml HRP-Linked  
Caprine Anti-Mouse IgG Polyclonal  
Antibody  
(Catalog: SAA544Mu19)



Western Blot; Sample: Lane1: Bovine  
Kidney lysate; Lane2: Bovine Cerebrum  
lysate; Lane3: Bovine Colon lysate;  
Lane4: Bovine Testis lysate  
Primary Ab: 1µg/ml Mouse Anti-Bovine  
CASP6 Antibody  
Second Ab: 0.2µg/mL HRP-Linked  
Caprine Anti-Mouse IgG Polyclonal  
Antibody  
(Catalog: SAA544Mu19)

### **[ IMPORTANT NOTE ]**

The kit is designed for research use only, we will not be responsible for any issue if the kit was used in clinical diagnostic or any other procedures.