

mA92419Hu22

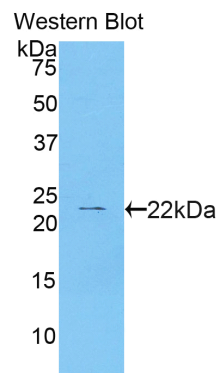
Monoclonal Antibody to Cathelicidin Antimicrobial Peptide (CAMP)
Organism: Homo sapiens (Human)
Instruction manual

FOR IN VITRO USE AND RESEARCH USE ONLY
 NOT FOR USE IN CLINICAL DIAGNOSTIC PROCEDURES

7th Edition (Revised in May, 2013)

[**PRODUCT INFORMATION**]

Immunogen: CAMP, Human
Clonality: Monoclonal
Host: Mouse
Immunoglobulin Type: IgG
Purification: Affinity Chromatography.
Applications: WB, ICC, IHC-P, IHC-F, ELISA
Concentration: 500µg/mL
UOM: 200µg



Sample: Recombinant CAMP, Human

[**IMMUNOGEN INFORMATION**]

Immunogen: Recombinant CAMP (Gln31~Ser170) expressed in *E.coli*.
USCN Accession No.: rP92419Hu01
Sequence: The target protein is fused with two N-terminal Tags, His-tag and S-tag and its sequence is listed below.
 MHHHHHHSSG LVPRGSGMKE TAAAKFERQH MDSPDLGTDD DDKAMADIGS EF-
 QVLSYKEAVL RAIDGINQRS SDANLYRLLD LDPRTMDGD PDTPKPVST VKETVCPRTT
 QQSPEDCDFK KDGLVKRCMG TVTLNQARGS FDISCDKDNK RFALLGDFFR KSKEKIGKEF
 KRIVQRIKDF LRNLVPRTES

Unique product Superb quality Client favorite Nicest service  ISO9001:2008;  ISO13485:2003; 

11271 Richmond Avenue, H104, Houston, TX 77082, USA | Toll free: 001-888-960-7402 | Fax: 001-832-538-0088 | Email: mail@uscnk.us | Http://www.uscnk.us
 Export Processing Zone, Wuhan 430056, P.R.China | Toll free: 0086-800-880-0687 | Fax: 0086-27-8425-9551 | Email: mail@uscnk.com | Http://www.uscnk.com

[ANTIBODY SPECIFICITY]

The antibody is a mouse monoclonal antibody raised against CAMP. It has been selected for its ability to recognize CAMP in immunohistochemical staining and western blotting.

[APPLICATIONS]

Western blotting: 1:100-400

Immunocytochemistry in formalin fixed cells: 1:100-500

Immunohistochemistry in formalin fixed frozen section: 1:100-500

Immunohistochemistry in paraffin section: 1:50-200

Enzyme-linked Immunosorbent Assay: 1:100-200

Optimal working dilutions must be determined by end user.

[CONTENTS]

Form & Buffer: Supplied as solution form in PBS, pH7.4, containing 0.02% NaN₃, 50% glycerol.

[STORAGE]

Store at 4°C for frequent use. Stored at -20°C to -80°C in a manual defrost freezer for one year without detectable loss of activity. Avoid repeated freeze-thaw cycles.