

**MAA802Hu22**

**Monoclonal Antibody to Cholecystokinin (CCK)**

**Organism Species: Homo sapiens (Human)**

***Instruction manual***

FOR IN VITRO USE AND RESEARCH USE ONLY

NOT FOR USE IN CLINICAL DIAGNOSTIC PROCEDURES

9th Edition (Revised in Jul, 2013)

## **[ PRODUCT INFORMATION ]**

**Immunogen:** CCK, Human

**Clonality:** Monoclonal

**Clone number:** A7

**Host:** Mouse

**Immunoglobulin Type:** IgG

**Purification:** Affinity Chromatography.

**Applications:** WB, ICC, IHC-P, IHC-F, ELISA

**Concentration:** 500µg/mL

**UOM:** 200µg

## **[ IMMUNOGEN INFORMATION ]**

**Immunogen:** Recombinant CCK (Met1~Ser115) expressed in *E.coli*.

**Accession No.:** RPA802Hu01

**Sequence:** The target protein is fused with two N-terminal Tags, His-tag and GST-tag and its sequence is listed below.

MSPILGYWKI KGLVQPTRL L LEYLEEKYEE HLYERDEGDK WRNKKFELGL EFPNLPYYID  
GDVKLTQSMA IIRYIADKHN MLGGCPKERA EISMLEGAVL DIRYGVSR IA YSKDFETLKV  
DFLSKLP EML KMFEDRLCHK TYLNGDHVTH PDFMLYDALD VVLYMDPMCL DAFPKLVCFK  
KRIEAI PQID KYLKSSKYIA WPLQG WQATF GGGDHPPKSD GSTSGSGHHH HHHSAGLVPR  
GSTAIGMKET AA AKFERQHM DSPDLGTLEV LFQGPLGSEF- MNSGVCLCVL  
MAVLAAGALT QPVPPADPAG SGLQRAEEAP RRQLRV SQRT DGESRAHLGALLARYIQQAR  
KAPSGRMSIV KNLQNLDP SH RISDRDYM GW MDFGRRSAEE YEYPS

## **[ ANTIBODY SPECIFICITY ]**

The antibody is a mouse monoclonal antibody raised against CCK. It has been selected for its ability to recognize CCK in immunohistochemical staining and western blotting.

## [ APPLICATIONS ]

Western blotting: 1:100-400

Immunocytochemistry in formalin fixed cells: 1:100-500

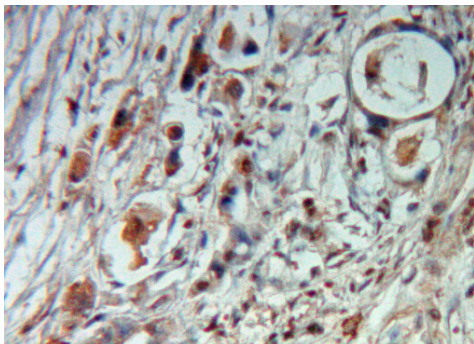
Immunohistochemistry in formalin fixed frozen section: 1:100-500

Immunohistochemistry in paraffin section: 1:50-200

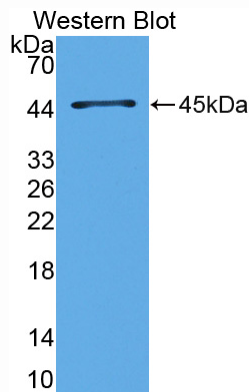
Enzyme-linked Immunosorbent Assay: 1:100-200

Optimal working dilutions must be determined by end user.

## [ IMAGES ]



Used in DAB staining on formalin fixed  
paraffin- embedded Pancreas tissue



Used in Western Blot, Sample:  
Recombinant CCK, Human

## [ CONTENTS ]

**Form & Buffer:** Supplied as solution form in PBS, pH7.4, containing 0.02% NaN<sub>3</sub>, 50% glycerol.

## [ STORAGE ]

Store at 4°C for frequent use. Stored at -20°C to -80°C in a manual defrost freezer for one year without detectable loss of activity. Avoid repeated freeze-thaw cycles.