

**MAC146Hu22**

**Monoclonal Antibody to Collagen Type VIII Alpha 1 (COL8a1)**

**Organism Species: *Homo sapiens (Human)***

***Instruction manual***

**FOR RESEARCH USE ONLY**

**NOT FOR USE IN CLINICAL DIAGNOSTIC PROCEDURES**

---

13th Edition (Revised in Aug, 2023)

## **[ PROPERTIES ]**

**Source:** Monoclonal antibody preparation

**Host:** Mouse

**Antibody isotype:** IgG2a Kappa

**Purification:** Protein A + Protein G affinity chromatography

**Clone number:** C3

**Traits:** Liquid

**Concentration:** 1mg/mL

**UOM:** 100 $\mu$ L

**Cross Reactivity:** Mouse.

**Applications:** WB

## **[ IMMUNOGEN ]**

**Immunogen:** Recombinant COL8a1 (Pro575~Pro743) expressed in *E.coli*

**Accession No.:** RPC146Hu01

## **[ APPLICATIONS ]**

Western blotting: 0.01-2 $\mu$ g/mL;

Optimal working dilutions must be determined by end user.

## **[ FORMULATION ]**

**Form & Buffer:** Supplied as solution form in 0.01M PBS, pH7.4, containing 0.05% Proclin-300, 50% glycerol.

## **[ STORAGE AND STABILITY ]**

**Storage:** Avoid repeated freeze/thaw cycles.

Store at 4°C for frequent use.

Aliquot and store at -20°C for 24 months.

**Stability Test:** The thermal stability is described by the loss rate. The loss rate was determined by accelerated thermal degradation test, that is, incubate the protein at 37°C for 48h, and no obvious degradation and precipitation were observed. The loss rate is less than 5% within the

expiration date under appropriate storage condition.

### [ IDENTIFICATION ]

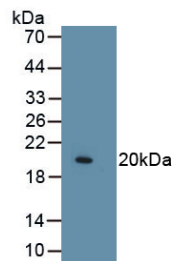
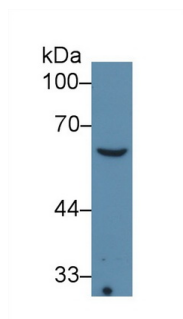


Figure. Western Blot; Sample:  
Recombinant COL8a1, Human.



Western Blot; Sample: Sp2/0 cell lysate  
Primary Ab: 2µg/ml Mouse Anti-Human  
COL8a1 Antibody  
Second Ab: 0.2µg/mL HRP-Linked  
Rabbit Anti-Mouse IgG Polyclonal  
Antibody  
(Catalog: SAA544Mu19)

### [ IMPORTANT NOTE ]

The kit is designed for research use only, we will not be responsible for any issue if the kit was used in clinical diagnostic or any other procedures.