

MAA635Hu22

Monoclonal Antibody to Complement Factor H (CFH)

Organism Species: Homo sapiens (Human)

Instruction manual

FOR IN VITRO USE AND RESEARCH USE ONLY

NOT FOR USE IN CLINICAL DIAGNOSTIC PROCEDURES

9th Edition (Revised in Jul, 2013)

[PRODUCT INFORMATION]

Immunogen: CFH, Human

Clonality: Monoclonal

Clone number: G4

Host: Mouse

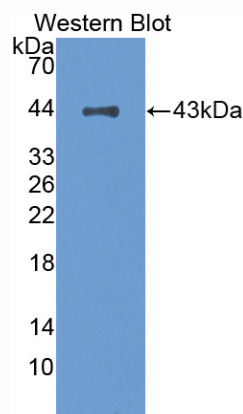
Immunoglobulin Type: IgG

Purification: Affinity Chromatography.

Applications: WB, ICC, IHC-P, IHC-F, ELISA

Concentration: 500µg/mL

UOM: 200µg



Sample: Recombinant CFH, Human

[IMMUNOGEN INFORMATION]

Immunogen: Recombinant CFH (Ser860~Arg1231) expressed in *E.coli*.

Accession No.: RPA635Hu01

Sequence: The target protein is fused with N-terminal His-Tag and its sequence is listed below.

MGHHHHHSGSEF-S IPLCVEKIPC SQPPQIEHGT INSSRSSQES YAHGTKLSYT
CEGGFRISEE NETTCYMGKW SSPPQCEGLP CKSPPEISHG VVAHMSDSYQ
YGEEVTYKCF EFGIDGPAI AKCLGEKWSH PPSCIKTDCI SLPSFENAIP MGEKKDVYKA
GEQVTYTCAT YYKMDGASNV TCINSRWTGR PTCRDTSCVN PPTVQNAYIV
SRQMSKYPSPG ERVRYQCRSP YEMFGDEEVM CLNGNWTEPP QCKDSTGKCG
PPPIDNGDI TSFPLSVYAP ASSVEYQCQONLYQLEGNKRI TCRNGQWSEP PKCLHPCVIS
REIMENYNIA LRWTAKQKLY SRTGESVEFV CKRGYRLSSR SHTLR TTCWD GKLEYPTCAK
R

[ANTIBODY SPECIFICITY]

The antibody is a mouse monoclonal antibody raised against CFH. It has been selected for its ability to recognize CFH in immunohistochemical staining and western blotting.

[APPLICATIONS]

Western blotting: 1:100-400

Immunocytochemistry in formalin fixed cells: 1:100-500

Immunohistochemistry in formalin fixed frozen section: 1:100-500

Immunohistochemistry in paraffin section: 1:50-200

Enzyme-linked Immunosorbent Assay: 1:100-200

Optimal working dilutions must be determined by end user.

[CONTENTS]

Form & Buffer: Supplied as solution form in PBS, pH7.4, containing 0.02% NaN₃, 50% glycerol.

[STORAGE]

Store at 4°C for frequent use. Stored at -20°C to -80°C in a manual defrost freezer for one year without detectable loss of activity. Avoid repeated freeze-thaw cycles.