

MAC030Ra22

Monoclonal Antibody to Creatine Kinase B (CK-BB)

Organism Species: *Rattus norvegicus* (Rat)

Instruction manual

FOR RESEARCH USE ONLY

NOT FOR USE IN CLINICAL DIAGNOSTIC PROCEDURES

13th Edition (Revised in Aug, 2023)

[PROPERTIES]

Source: Monoclonal antibody preparation

Host: Mouse

Antibody isotype: IgG1 Lambda

Purification: Protein A + Protein G affinity chromatography

Clone number: C4

Traits: Liquid

Concentration: 1mg/mL

UOM: 100µL

Cross Reactivity: Human;Porcine

Applications: WB; IHC

[IMMUNOGEN]

Immunogen: Recombinant CK-BB (Lys11~Leu367) expressed in *E.coli*

Accession No.: RPC030Ra01

[APPLICATIONS]

Western blotting: 0.01-2µg/mL;

Immunohistochemistry: 5-30µg/mL;

Optimal working dilutions must be determined by end user.

[FORMULATION]

Form & Buffer: Supplied as solution form in 0.01M PBS, pH7.4, containing 0.05% Proclin-300, 50% glycerol.

[STORAGE AND STABILITY]

Storage: Avoid repeated freeze/thaw cycles.

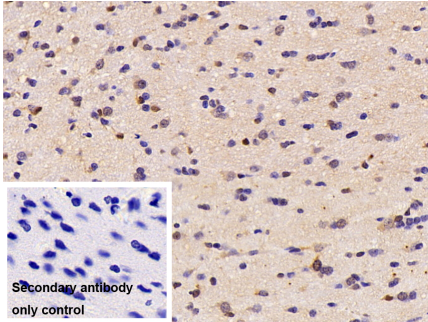
Store at 4°C for frequent use.

Aliquot and store at -20°C for 24 months.

Stability Test: The thermal stability is described by the loss rate. The loss rate was determined by accelerated thermal degradation test, that is, incubate the protein at 37°C for 48h, and no

obvious degradation and precipitation were observed. The loss rate is less than 5% within the expiration date under appropriate storage condition.

[IDENTIFICATION]



DAB staining on IHC-P;

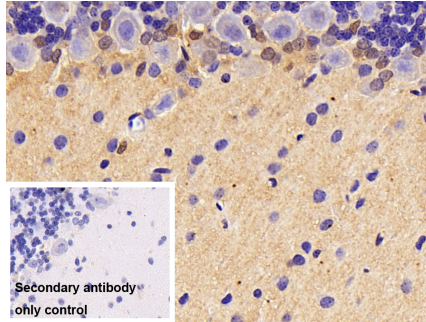
Sample: Rat Cerebrum Tissue

Primary Ab: 30µg/ml Mouse Anti-Rat
CK-BB Antibody

Control: Used PBS instead of primary
antibody

Second Ab: 2?g/ml HRP-Linked
Caprine Anti-Mouse IgG Polyclonal
Antibody

(Catalog: SAA544Mu19)



DAB staining on IHC-P;

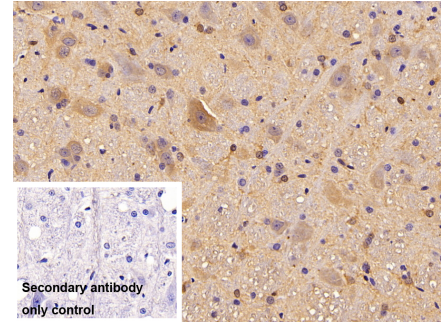
Sample: Rat Cerebellum Tissue

Primary Ab: 30µg/ml Mouse Anti-Rat
CK-BB Antibody

Control: Used PBS instead of primary
antibody

Second Ab: 2?g/ml HRP-Linked
Caprine Anti-Mouse IgG Polyclonal
Antibody

(Catalog: SAA544Mu19)



DAB staining on IHC-P;

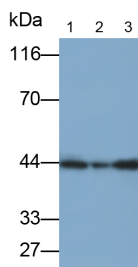
Sample: Rat Spinal cord Tissue

Primary Ab: 30µg/ml Mouse Anti-Rat
CK-BB Antibody

Control: Used PBS instead of primary
antibody

Second Ab: 2?g/ml HRP-Linked
Caprine Anti-Mouse IgG Polyclonal
Antibody

(Catalog: SAA544Mu19)



Western Blot; Samples: Lane1: 293T

cell lysate; Lane2: Hela cell lysate;

Lane3: Porcine Cerebrum lysate;

Primary Ab: 0.02µg/ml Mouse Anti-Rat
CK-BB Antibody

Second Ab: 0.2?g/ml HRP-Linked
Caprine Anti-Mouse IgG Polyclonal

Antibody

(Catalog: SAA544Mu19)

[IMPORTANT NOTE]

The kit is designed for research use only, we will not be responsible for any issue if the kit was used in clinical diagnostic or any other procedures.