

MAA665Mi21

Monoclonal Antibody to Cross Linked C-Telopeptide Of Type I Collagen (CTXI)

Organism Species: *Homo sapiens (Human)*

Instruction manual

FOR RESEARCH USE ONLY

NOT FOR USE IN CLINICAL DIAGNOSTIC PROCEDURES

13th Edition (Revised in Aug, 2023)

[PROPERTIES]

Source: Monoclonal antibody preparation

Host: Mouse

Antibody isotype: IgG2b Kappa

Purification: Protein A + Protein G affinity chromatography

Clone number: C2

Traits: Liquid

Concentration: 1mg/mL

UOM: 100µL

Cross Reactivity: Human

Applications: WB; IHC; ICC; IP.

[IMMUNOGEN]

Immunogen: Synthetic Peptide, CTXI conjugated to KLH. Target peptide sequence: EKAHDGGRYYRA.

Accession No.: CPA665Mi31

[APPLICATIONS]

Western blotting: 0.01-2µg/mL;

Immunohistochemistry: 5-20µg/mL;

Immunocytochemistry: 5-20µg/mL;

Optimal working dilutions must be determined by end user.

[FORMULATION]

Form & Buffer: Supplied as solution form in 0.01M PBS, pH7.4, containing 0.05% Proclin-300, 50% glycerol.

[STORAGE AND STABILITY]

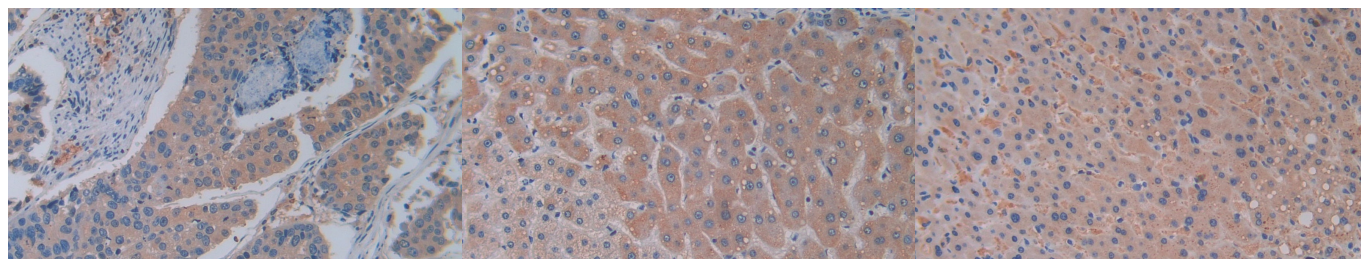
Storage: Avoid repeated freeze/thaw cycles.

Store at 4°C for frequent use.

Aliquot and store at -20°C for 24 months.

Stability Test: The thermal stability is described by the loss rate. The loss rate was determined by accelerated thermal degradation test, that is, incubate the protein at 37°C for 48h, and no obvious degradation and precipitation were observed. The loss rate is less than 5% within the expiration date under appropriate storage condition.

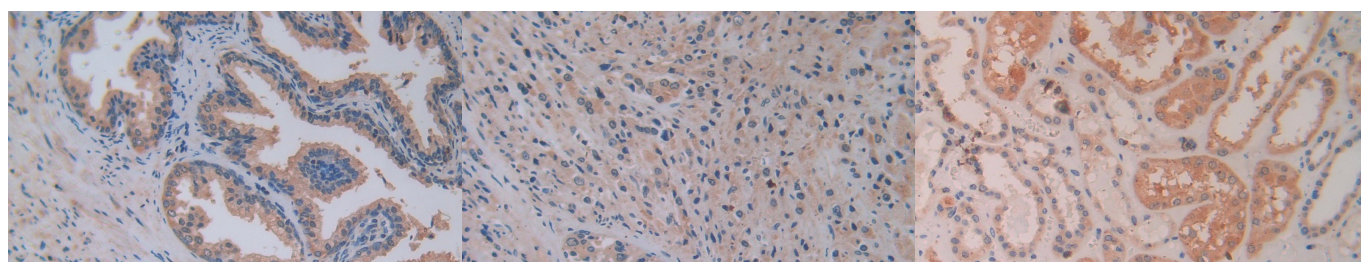
[IDENTIFICATION]



DAB staining on IHC-P; Samples:
Human Lung cancer Tissue; Primary
Ab: 20µg/ml Mouse Anti-Multi-species
CTXI Antibody Second Ab:
2µg/mL HRP-Linked Caprine Anti-
Mouse IgG Polyclonal Antibody
(Catalog: SAA544Mu19)

DAB staining on IHC-P;
Samples: Human Liver Tissue;
Primary Ab: 20µg/ml Mouse Anti-Multi-
species CTXI Antibody
Second Ab: 2µg/mL HRP-Linked
Caprine Anti-Mouse IgG Polyclonal
Antibody
(Catalog: SAA544Mu19)

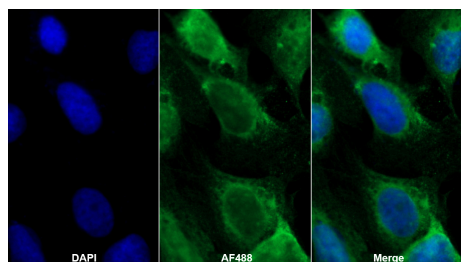
DAB staining on IHC-P;
Samples: Human Liver cancer Tissue;
Primary Ab: 20µg/ml Mouse Anti-Multi-
species CTXI Antibody
Second Ab: 2µg/mL HRP-Linked
Caprine Anti-Mouse IgG Polyclonal
Antibody
(Catalog: SAA544Mu19)



DAB staining on IHC-P;
Samples: Human Prostate Tissue;
Primary Ab: 20µg/ml Mouse Anti-Multi-
species CTXI Antibody
Second Ab: 2µg/mL HRP-Linked
Caprine Anti-Mouse IgG Polyclonal
Antibody
(Catalog: SAA544Mu19)

DAB staining on IHC-P;
Samples: Human Prostate cancer
Tissue;
Primary Ab: 20µg/ml Mouse Anti-Multi-
species CTXI Antibody
Second Ab: 2µg/mL HRP-Linked
Caprine Anti-Mouse IgG Polyclonal
Antibody
(Catalog: SAA544Mu19)

DAB staining on IHC-P;
Samples: Human Kidney Tissue;
Primary Ab: 20µg/ml Mouse Anti-Multi-
species CTXI Antibody
Second Ab: 2µg/mL HRP-Linked
Caprine Anti-Mouse IgG Polyclonal
Antibody
(Catalog: SAA544Mu19)



AF488 staining on IF;

Sample: U2OS cell

Primary Ab: 20µg/ml Mouse Anti-Multi-species CTXI Antibody

Second Ab: 2?g/ml AF488-Linked

Caprine Anti-Mouse IgG Polyclonal Antibody

(Catalog: SAA544Mu11)

[IMPORTANT NOTE]

The kit is designed for research use only, we will not be responsible for any issue if the kit was used in clinical diagnostic or any other procedures.