

**MAB932Hu21**

**Monoclonal Antibody to Glyceraldehyde-3-Phosphate Dehydrogenase (GAPDH)**

**Organism Species: *Homo sapiens (Human)***

***Instruction manual***

FOR RESEARCH USE ONLY

NOT FOR USE IN CLINICAL DIAGNOSTIC PROCEDURES

---

13th Edition (Revised in Aug, 2023)

## **[ PROPERTIES ]**

**Source:** Monoclonal antibody preparation

**Host:** Mouse

**Antibody isotype:** IgG1 Kappa

**Purification:** Protein A + Protein G affinity chromatography

**Clone number:** E4

**Traits:** Liquid

**Concentration:** 1mg/mL

**UOM:** 100μL

**Cross Reactivity:** Mouse; Rat; Cavia; Rabbit; Porcine; Caprine; Ovine; Gallu

**Applications:** WB; IHC; ICC; IP.

## **[ IMMUNOGEN ]**

**Immunogen:** Recombinant GAPDH (Gly2~Ser148) expressed in *E.coli*

**Accession No.:** RPB932Hu01

## **[ APPLICATIONS ]**

Western blotting: 0.01-3μg/mL;

Immunohistochemistry: 5-20μg/mL;

Immunocytochemistry: 5-20μg/mL;

Optimal working dilutions must be determined by end user.

## **[ FORMULATION ]**

**Form & Buffer:** Supplied as solution form in 0.01M PBS, pH7.4, containing 0.05% Proclin-300, 50% glycerol.

## **[ STORAGE AND STABILITY ]**

**Storage:** Avoid repeated freeze/thaw cycles.

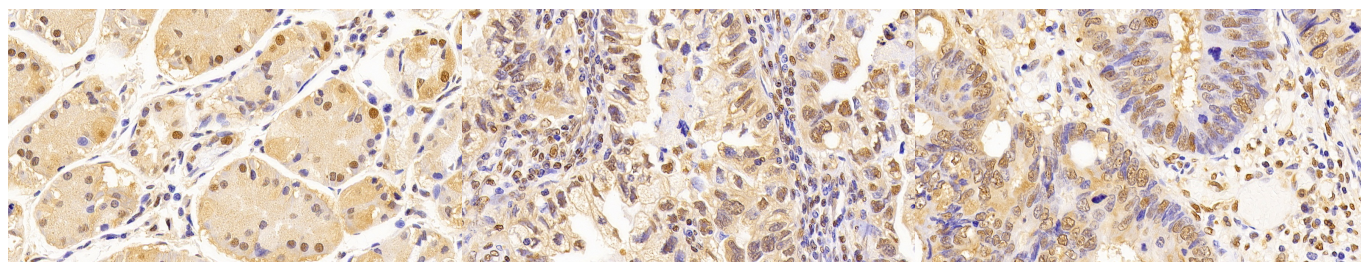
Store at 4°C for frequent use.

Aliquot and store at -20°C for 24 months.

**Stability Test:** The thermal stability is described by the loss rate. The loss rate was determined

by accelerated thermal degradation test, that is, incubate the protein at 37°C for 48h, and no obvious degradation and precipitation were observed. The loss rate is less than 5% within the expiration date under appropriate storage condition.

## [ IDENTIFICATION ]



DAB staining on IHC-P;

Sample: Human Stomach Tissue;

Primary Ab: 10µg/ml Mouse Anti-Human GAPDH Antibody

Second Ab: 2µg/mL HRP-Linked Caprine Anti-Mouse IgG Polyclonal Antibody

(Catalog: SAA544Mu19)

DAB staining on IHC-P;

Sample: Human Endometrial cancer Tissue;

Primary Ab: 10µg/ml Mouse Anti-Human GAPDH Antibody

Second Ab: 2µg/mL HRP-Linked Caprine Anti-Mouse IgG Polyclonal Antibody

(Catalog: SAA544Mu19)

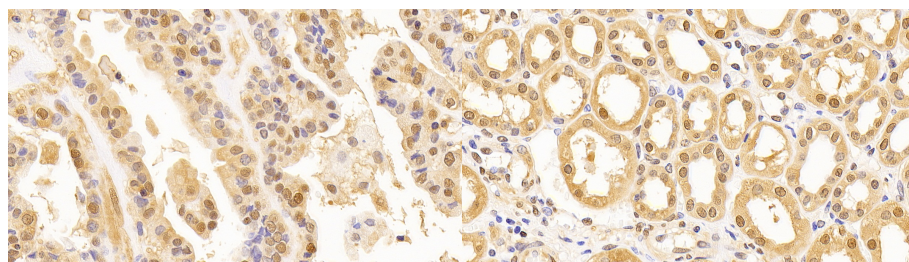
DAB staining on IHC-P;

Sample: Human Colorectal cancer Tissue;

Primary Ab: 10µg/ml Mouse Anti-Human GAPDH Antibody

Second Ab: 2µg/mL HRP-Linked Caprine Anti-Mouse IgG Polyclonal Antibody

(Catalog: SAA544Mu19)



DAB staining on IHC-P;

Sample: Human Thyroid cancer Tissue;

Primary Ab: 10µg/ml Mouse Anti-Human GAPDH Antibody

Second Ab: 2µg/mL HRP-Linked Caprine Anti-Mouse IgG Polyclonal Antibody

(Catalog: SAA544Mu19)

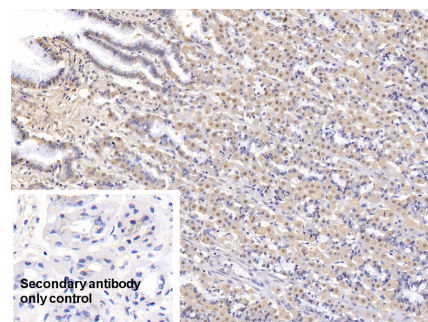
DAB staining on IHC-P;

Sample: Human Kidney Tissue;

Primary Ab: 10µg/ml Mouse Anti-Human GAPDH Antibody

Second Ab: 2µg/mL HRP-Linked Caprine Anti-Mouse IgG Polyclonal Antibody

(Catalog: SAA544Mu19)



DAB staining on IHC-P;

Sample: Porcine Stomach Tissue

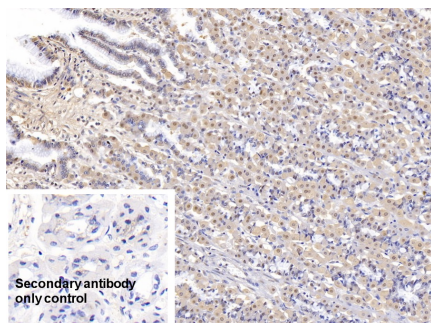
Primary Ab: 10µg/ml Mouse Anti-Human GAPDH Antibody

Control: Used PBS instead of primary antibody

Second Ab: 2µg/ml HRP-Linked Caprine Anti-Mouse IgG Polyclonal

Antibody

(Catalog: SAA544Mu19)



DAB staining on IHC-P;

Sample: Porcine Stomach Tissue

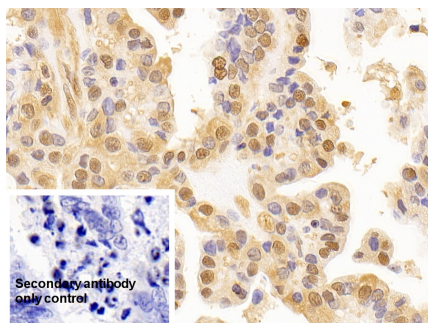
Primary Ab: 10µg/ml Mouse Anti-Human GAPDH Antibody

Control: Used PBS instead of primary antibody

Second Ab: 2µg/ml HRP-Linked

Caprine Anti-Mouse IgG Polyclonal Antibody

(Catalog: SAA544Mu19)



DAB staining on IHC-P;

Sample: Human Thyroid cancer Tissue

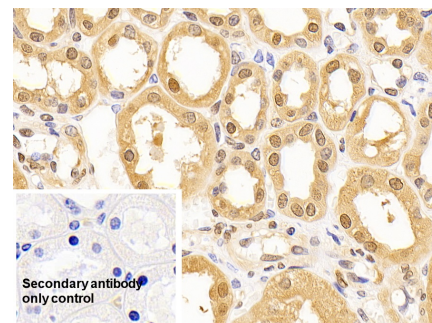
Primary Ab: 10µg/ml Mouse Anti-Human GAPDH Antibody

Control: Used PBS instead of primary antibody

Second Ab: 2µg/ml HRP-Linked

Caprine Anti-Mouse IgG Polyclonal Antibody

(Catalog: SAA544Mu19)



DAB staining on IHC-P;

Sample: Human Kidney Tissue

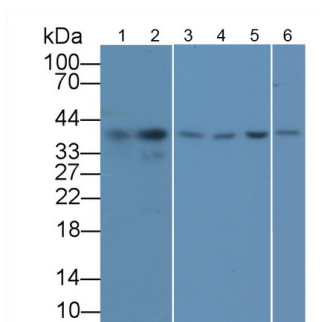
Primary Ab: 10µg/ml Mouse Anti-Human GAPDH Antibody

Control: Used PBS instead of primary antibody

Second Ab: 2µg/ml HRP-Linked

Caprine Anti-Mouse IgG Polyclonal Antibody

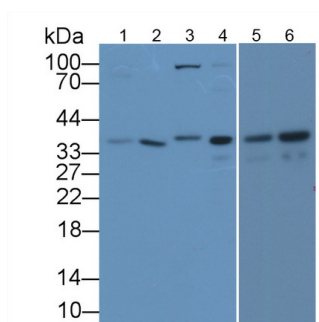
(Catalog: SAA544Mu19)



Western Blot; Sample: Lane1: Human Lung lysate; Lane2: 293T cell lysate; Lane3: Cavia Kidney lysate; Lane4: Porcine Liver lysate; Lane5: Porcine Kidney lysate; Lane6: Gallus Kidney lysate

Primary Ab: 0.5µg/ml Mouse Anti-Human GAPDH Antibody

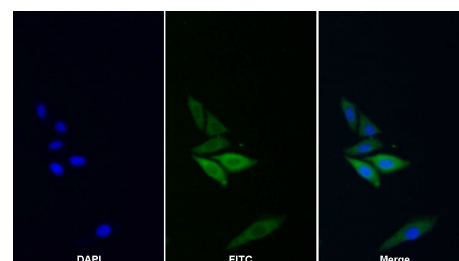
Second Ab: 0.2µg/mL HRP-Linked



Western Blot; Sample: Lane1: Rabbit Liver lysate; Lane2: Rabbit Kidney lysate; Lane3: Caprine Liver lysate; Lane4: Mouse Liver lysate; Lane5: Rat Liver lysate; Lane6: Rat Kidney lysate

Primary Ab: 0.5µg/ml Mouse Anti-Human GAPDH Antibody

Second Ab: 0.2µg/mL HRP-Linked Caprine Anti-Mouse IgG Polyclonal



FITC staining on IF;

Sample: HepG2 cell

Primary Ab: 20µg/ml Mouse Anti-Human GAPDH Antibody

Second Ab: 2µg/ml FITC-Linked Caprine Anti-Mouse IgG Polyclonal Antibody

(Catalog: SAA544Mu11)



Caprine Anti-Mouse IgG Polyclonal

Antibody

Antibody

(Catalog: SAA544Mu19)

(Catalog: SAA544Mu19)

**[ IMPORTANT NOTE ]**

The kit is designed for research use only, we will not be responsible for any issue if the kit was used in clinical diagnostic or any other procedures.