

**MAB081Hu22**

**Monoclonal Antibody to Heat Shock 70kDa Protein 1A (HSPA1A)**

**Organism Species: *Homo sapiens (Human)***

***Instruction manual***

FOR RESEARCH USE ONLY

NOT FOR USE IN CLINICAL DIAGNOSTIC PROCEDURES

---

13th Edition (Revised in Aug, 2023)

**[ PROPERTIES ]**

**Source:** Monoclonal antibody preparation

**Host:** Mouse

**Antibody isotype:** IgG2b Kappa

**Purification:** Protein A + Protein G affinity chromatography

**Clone number:** C9

**Traits:** Liquid

**Concentration:** 1mg/ml

**UOM:** 100µl

**Cross Reactivity:** Rat;Porcine;Mouse;Rabbit;Cavia;Bovine;Gallus

**Applications:** WB

**[ IMMUNOGEN ]**

**Immunogen:** Recombinant HSPA1A (Asp285~Asp641 (Accession # P08107)) expressed in *E.coli*

**Accession No.:** RPB081Hu02

**[ APPLICATIONS ]**

Western blotting: 0.01-3µg/mL

Optimal working dilutions must be determined by end user.

**[ FORMULATION ]**

**Form & Buffer:** Supplied as solution form in 0.01M PBS, pH7.4, containing 0.05% Proclin-300, 50% glycerol.

**[ STORAGE AND STABILITY ]**

**Storage:** Avoid repeated freeze/thaw cycles.

Store at 4°C for frequent use.

Aliquot and store at -20°C for 24 months.

**Stability Test:** The thermal stability is described by the loss rate. The loss rate was determined by accelerated thermal degradation test, that is, incubate the protein at 37°C for 48h, and no

obvious degradation and precipitation were observed. The loss rate is less than 5% within the expiration date under appropriate storage condition.

**[ IDENTIFICATION ]**

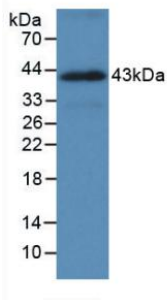
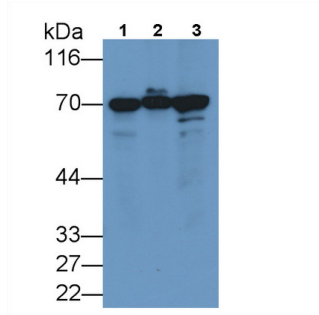
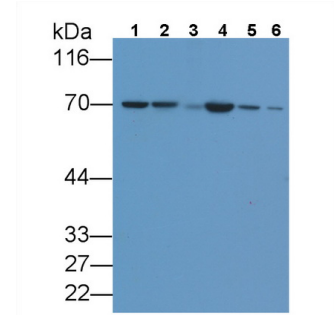


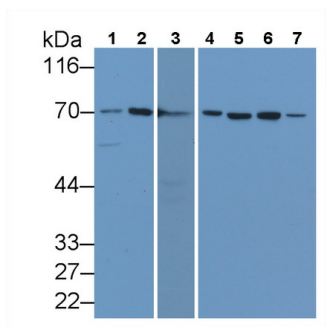
Figure. Western Blot; Sample: Recombinant HSPA1A, Human.



Western Blot; Sample: Lane1: Porcine Liver lysate; Lane2: Porcine Cerebrum lysate; Lane3: Jurkat cell lysate  
 Primary Ab: 3µg/ml Mouse Anti-Human HSPA1A Antibody  
 Second Ab: 0.2µg/mL HRP-Linked Caprine Anti-Mouse IgG Polyclonal Antibody  
 (Catalog: SAA544Mu19) Selected



Western Blot; Sample: Lane1: Mouse Liver lysate; Lane2: Mouse Cerebrum lysate; Lane3: Cavia Liver lysate; Lane4: Cavia Cerebrum lysate; Lane5: Rat Liver lysate; Lane6: Rat Cerebrum lysate  
 Primary Ab: 1?g/ml Mouse Anti-Human HSPA1A Antibody  
 Second Ab: 0.2µg/mL HRP-Linked Caprine Anti-Mouse IgG Polyclonal Antibody  
 (Catalog: SAA544Mu19) Selected



Western Blot; Sample: Lane1: Canine Liver lysate; Lane2: Canine Cerebrum lysate; Lane3: Gallus Liver lysate; Lane4: Gallus Cerebrum lysate; Lane5: Bovine Liver lysate; Lane6: Bovine Cerebrum lysate; Lane7: Bovine Liver lysate

Cerebrum lysate; Lane7: Rabbit Liver

lysate

Primary Ab: 1?g/ml Mouse Anti-Human

HSPA1A Antibody

Second Ab: 0.2µg/mL HRP-Linked

Caprine Anti-Mouse IgG Polyclonal

Antibody

(Catalog: SAA544Mu19) Selected

### **[ IMPORTANT NOTE ]**

The kit is designed for research use only, we will not be responsible for any issue if the kit was used in clinical diagnostic or any other procedures.