

MAB081Hu25

Monoclonal Antibody to Heat Shock 70kDa Protein 1A (HSPA1A)

Organism Species: *Homo sapiens* (Human)

Instruction manual

FOR RESEARCH USE ONLY

NOT FOR USE IN CLINICAL DIAGNOSTIC PROCEDURES

12th Edition (Revised in Aug, 2016)

[PROPERTIES]

Source: Monoclonal antibody preparation

Host: Mouse

Antibody isotype: IgG2b Kappa

Purification: Protein A + Protein G affinity chromatography

Clone number: C7

Traits: Liquid

Concentration: 1mg/ml

UOM: 100µl

Cross Reactivity: Mouse; Rat; Cavia; Canine; Porcine; Bovine.

Applications: WB

[IMMUNOGEN]

Immunogen: Recombinant HSPA1A (Asp285~Asp641 (Accession # P08107)) expressed in *E.coli*

Accession No.: RPB081Hu02

[APPLICATIONS]

Western blotting: 0.5-3µg/mL;

Optimal working dilutions must be determined by end user.

[FORMULATION]

Form & Buffer: Supplied as solution form in 0.01M PBS, pH7.4, containing 0.05% Proclin-300, 50% glycerol.

[STORAGE AND STABILITY]

Storage: Avoid repeated freeze/thaw cycles.

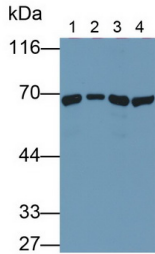
Store at 4°C for frequent use.

Aliquot and store at -20°C for 24 months.

Stability Test: The thermal stability is described by the loss rate. The loss rate was determined by accelerated thermal degradation test, that is, incubate the protein at 37°C for 48h, and no

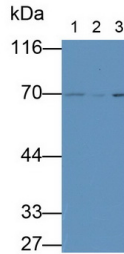
obvious degradation and precipitation were observed. The loss rate is less than 5% within the expiration date under appropriate storage condition.

[IDENTIFICATION]



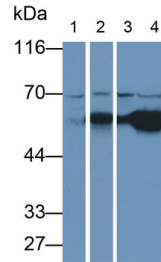
Western Blot; Sample: Lane1: Porcine Liver lysate; Lane2: Porcine Cerebrum lysate; Lane3: Hela cell lysate; Lane4: Jurkat cell lysate

Primary Ab: 3ug/ml Mouse Anti-Human HSPA1A Antibody
 Second Ab: 0.2µg/mL HRP-Linked Caprine Anti-Mouse IgG Polyclonal Antibody
 (Catalog: SAA544Mu19)



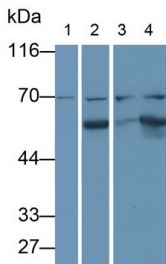
Western Blot; Sample: Lane1: Rat Cerebrum lysate; Lane2: Rat Cerebellum lysate; Lane3: Mouse Cerebrum lysate

Primary Ab: 3ug/ml Mouse Anti-Human HSPA1A Antibody
 Second Ab: 0.2µg/mL HRP-Linked Caprine Anti-Mouse IgG Polyclonal Antibody
 (Catalog: SAA544Mu19)



Western Blot; Sample: Lane1: Mouse Liver lysate; Lane2: Mouse Cerebrum lysate; Lane3: Cavia Liver lysate; Lane4: Cavia Cerebrum lysate

Primary Ab: 1ug/ml Mouse Anti-Human HSPA1A Antibody
 Second Ab: 0.2µg/mL HRP-Linked Caprine Anti-Mouse IgG Polyclonal Antibody
 (Catalog: SAA544Mu19)



Western Blot; Sample: Lane1: Canine Liver lysate; Lane2: Canine Cerebrum lysate; Lane3: Bovine Liver lysate; Lane4: Bovine Cerebrum lysate

Primary Ab: 1ug/ml Mouse Anti-Human HSPA1A Antibody
 Second Ab: 0.2µg/mL HRP-Linked

Caprine Anti-Mouse IgG Polyclonal

Antibody

(Catalog: SAA544Mu19)

[IMPORTANT NOTE]

The kit is designed for research use only, we will not be responsible for any issue if the kit was used in clinical diagnostic or any other procedures.