

**MAX656Ge21****Monoclonal Antibody to Hexa Histidine-Tag (H6)****Organism: General*****Instruction manual***

FOR IN VITRO USE AND RESEARCH USE ONLY

NOT FOR USE IN CLINICAL DIAGNOSTIC PROCEDURES

10th Edition (Revised in Jan, 2014)

**[ PRODUCT INFORMATION ]****Immunogen:** 6x Histidine**Clonality:** Monoclonal**Host:** Mouse**Immunoglobulin Type:** IgM kappa**Purification:** Affinity Chromatography.**Applications:** WB, ICC, IHC-P, IHC-F, ELISA**Concentration:** 500µg/mL**UOM:** 200µg**[ IMMUNOGEN INFORMATION ]****Immunogen:** Synthetic Peptide of 6x Histidine.**Accession No.:** CPX656Ge01**Relevance:** A His tag is a tag of 6 histidines added to the end of the protein. His tags are commonly used as a tool to help purify some recombinant proteins.**[ ANTIBODY SPECIFICITY ]**

The antibody is a mouse monoclonal antibody raised against 6x Histidine. It has been selected for its ability to recognize 6x Histidine in immunohistochemical staining and western blotting.

**[ APPLICATIONS ]**

Western blotting: 1:50-400

Immunocytochemistry in formalin fixed cells: 1:50-500

Immunohistochemistry in formalin fixed frozen section: 1:50-500

Immunohistochemistry in paraffin section: 1:10-100

Enzyme-linked Immunosorbent Assay: 1:100-200

Optimal working dilutions must be determined by end user.

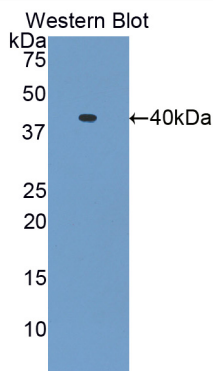
## [ CONTENTS ]

**Form & Buffer:** Supplied as solution form in PBS, pH7.4, containing 0.02%  $\text{NaN}_3$ , 50% glycerol.

## [ STORAGE ]

Store at 4°C for frequent use. Stored at -20°C to -80°C in a manual defrost freezer for one year without detectable loss of activity. Avoid repeated freeze-thaw cycles.

## [ IMAGES ]



**Used in Western Blot, Sample: 40KD**  
**Recombinant Protein With His-tag**