

MAA222Po21**Monoclonal Antibody to Interferon Beta (IFNb)****Organism Species: *Sus scrofa*; Porcine (Pig)*****Instruction manual***

FOR IN VITRO USE AND RESEARCH USE ONLY

NOT FOR USE IN CLINICAL DIAGNOSTIC PROCEDURES

10th Edition (Revised in Jan, 2014)

[PRODUCT INFORMATION]**Immunogen:** IFNb, Porcine**Clonality:** Monoclonal**Clone number:** C5**Host:** Mouse**Immunoglobulin Type:** IgG2b Kappa**Purification:** Affinity Chromatography.**Applications:** WB, ICC, IHC-P, IHC-F, ELISA**Concentration:** 500µg/mL**UOM:** 200µg**[IMMUNOGEN INFORMATION]****Immunogen:** Recombinant IFNb (Met22~Asn186) with two N-terminal Tags, His-tag and GST-tag expressed in *E.coli*.**Accession No.:** RPA222Po01**[ANTIBODY SPECIFICITY]**

The antibody is a mouse monoclonal antibody raised against IFNb. It has been selected for its ability to recognize IFNb in immunohistochemical staining and western blotting.

[APPLICATIONS]

Western blotting: 1:100-400

Immunocytochemistry in formalin fixed cells: 1:100-500

Immunohistochemistry in formalin fixed frozen section: 1:100-500

Immunohistochemistry in paraffin section: 1:50-200

Enzyme-linked Immunosorbent Assay: 1:100-200

Optimal working dilutions must be determined by end user.

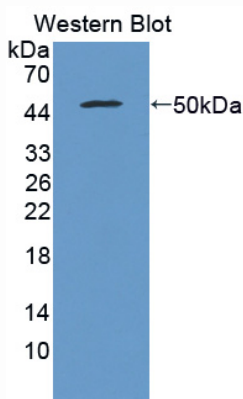
[CONTENTS]

Form & Buffer: Supplied as solution form in PBS, pH7.4, containing 0.02% NaN₃, 50% glycerol.

[STORAGE]

Store at 4°C for frequent use. Stored at -20°C to -80°C in a manual defrost freezer for one year without detectable loss of activity. Avoid repeated freeze-thaw cycles.

[IMAGES]



Used in Western Blot, Sample:
Recombinant IFNb, Porcine