

**MAC579Hu21**

**Monoclonal Antibody to Luteinizing Hormone Beta Polypeptide (LHb)**

**Organism Species: *Homo sapiens (Human)***

***Instruction manual***

FOR RESEARCH USE ONLY

NOT FOR USE IN CLINICAL DIAGNOSTIC PROCEDURES

---

13th Edition (Revised in Aug, 2023)

## **[ PROPERTIES ]**

**Source:** Monoclonal antibody preparation

**Host:** Mouse

**Antibody isotype:** IgG1 Kappa

**Purification:** Protein A + Protein G affinity chromatography

**Clone number:** H4

**Traits:** Liquid

**Concentration:** 1mg/mL

**UOM:** 10µL

**Cross Reactivity:** Porcine

**Applications:** WB; IHC; ICC; IP.

## **[ IMMUNOGEN ]**

**Immunogen:** Recombinant LHb (Glu23~Leu141) expressed in *E.coli*

**Accession No.:** RPC579Hu01

## **[ APPLICATIONS ]**

Western blotting: 0.01-2µg/mL

Immunohistochemistry: 5-20µg/mL

Immunocytochemistry: 5-20µg/mL

Optimal working dilutions must be determined by end user.

## **[ FORMULATION ]**

**Form & Buffer:** Supplied as solution form in PBS, pH7.4, containing 0.02% NaN<sub>3</sub>, 50% glycerol.

## **[ STORAGE AND STABILITY ]**

**Storage:** Avoid repeated freeze/thaw cycles.

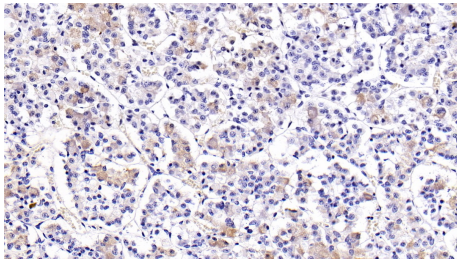
Store at 4°C for frequent use.

Aliquot and store at -20°C for 24 months.

**Stability Test:** The thermal stability is described by the loss rate. The loss rate was determined

by accelerated thermal degradation test, that is, incubate the protein at 37°C for 48h, and no obvious degradation and precipitation were observed. The loss rate is less than 5% within the expiration date under appropriate storage condition.

#### **[ IDENTIFICATION ]**



DAB staining on IHC-P; Sample:

Porcine Pituitary Tissue; Primary Ab:

20ug/ml Mouse Anti-Human LHb

Antibody Second Ab: 2µg/mL HRP-

Linked Caprine Anti-Mouse IgG

Polyclonal Antibody (Catalog:

SAA544Mu19)

#### **[ IMPORTANT NOTE ]**

The kit is designed for research use only, we will not be responsible for any issue if the kit was used in clinical diagnostic or any other procedures.