

MAA165Hu26

Monoclonal Antibody to Pepsinogen A (PGA)

Organism Species: *Homo sapiens (Human)*

Instruction manual

FOR RESEARCH USE ONLY

NOT FOR USE IN CLINICAL DIAGNOSTIC PROCEDURES

13th Edition (Revised in Aug, 2023)

[PROPERTIES]

Source: Monoclonal antibody preparation

Host: Mouse

Antibody isotype: IgG1 Kappa

Purification: Protein A + Protein G affinity chromatography

Clone number: C11

Traits: Liquid

Concentration: 1mg/mL

UOM: 100µL

Cross Reactivity: Rat;Canine;Porcine

Applications: WB; IHC; ICC/IF; FCM

[IMMUNOGEN]

Immunogen: Recombinant PGA (Val63~Phe163+Gly206~Ser295) expressed in *E.coli*

Accession No.: RPA165Hu01

[APPLICATIONS]

Western blotting: 0.01-2µg/mL;

Immunohistochemistry: 5-20µg/mL;

Immunofluorescence:5-20µg/mL;

Flow cytometry: 10µg/mL;

Optimal working dilutions must be determined by end user.

[FORMULATION]

Form & Buffer: Supplied as solution form in PBS, pH7.4, containing 0.02% NaN₃, 50% glycerol.

[STORAGE AND STABILITY]

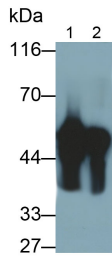
Storage: Avoid repeated freeze/thaw cycles.

Store at 4°C for frequent use.

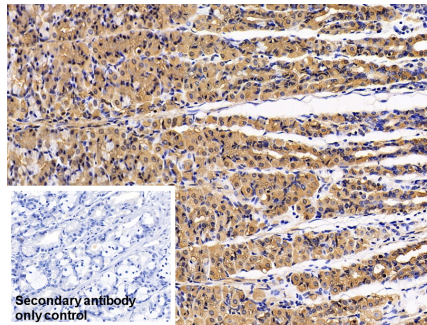
Aliquot and store at -20°C for 24 months.

Stability Test: The thermal stability is described by the loss rate. The loss rate was determined by accelerated thermal degradation test, that is, incubate the protein at 37°C for 48h, and no obvious degradation and precipitation were observed. The loss rate is less than 5% within the expiration date under appropriate storage condition.

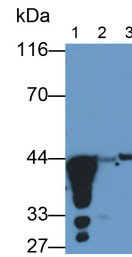
[IDENTIFICATION]



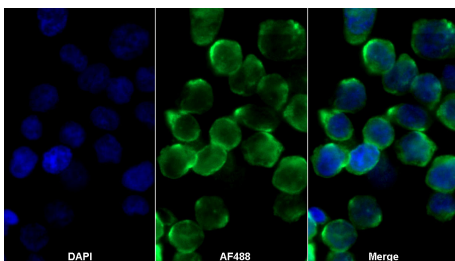
Western Blot; Samples: Lane1: Human Urine; Lane2: Porcine Stomach lysate;
 Primary Ab: 0.2µg/ml Mouse Anti-Human PGA Antibody Second Ab: 0.2?g/ml HRP-Linked Caprine Anti-Mouse IgG Polyclonal Antibody
 (Catalog: SAA544Mu19)



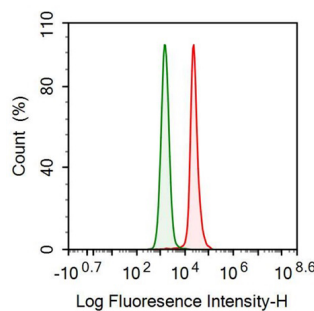
DAB staining on IHC-P;
 Sample: Porcine Stomach Tissue
 Primary Ab: 30µg/ml Mouse Anti-Human PGA Antibody
 Control: Used PBS instead of primary antibody
 Second Ab: 2?g/ml HRP-Linked Caprine Anti-Mouse IgG Polyclonal Antibody
 (Catalog: SAA544Mu19)



Western Blot; Samples: Lane1: Porcine Stomach lysate; Lane2: Rat Stomach lysate; Lane3: Canine Stomach lysate;
 Primary Ab: 0.1µg/ml Mouse Anti-Human PGA Antibody
 Second Ab: 0.2?g/ml HRP-Linked Caprine Anti-Mouse IgG Polyclonal Antibody
 (Catalog: SAA544Mu19)



AF488 staining on IF;
 Sample: HEL92.1.7 cell
 Primary Ab: 20µg/ml Mouse Anti-Human PGA Antibody
 Second Ab: 2?g/ml AF488-Linked Caprine Anti-Mouse IgG Polyclonal



Human THP1 cell line was fixed with 2% paraformaldehyde (10 min) , permeabilised with 0.1% BSA-Triton X-100,then stained with 10µg/ml mouse Anti-human PGA Monoclonal Antibody



Antibody
(Catalog: SAA544Mu11)

(Catalog MAA165Hu26, red histogram)
or Isotype control antibody (Catalog
IS067-Mu01, green histogram),
followed by 1µg/ml FITC-conjugated
Anti-mouse IgG Secondary Antibody
(Catalog SAA544Mu18).

[IMPORTANT NOTE]

The kit is designed for research use only, we will not be responsible for any issue if the kit was used in clinical diagnostic or any other procedures.