

**MAA846Hu29**

**Monoclonal Antibody to Prolactin (PRL)**

**Organism Species: *Homo sapiens (Human)***

***Instruction manual***

FOR RESEARCH USE ONLY

NOT FOR USE IN CLINICAL DIAGNOSTIC PROCEDURES

---

13th Edition (Revised in Aug, 2023)

**[ PROPERTIES ]**

**Source:** Monoclonal antibody preparation

**Host:** Mouse

**Antibody isotype:** IgG1Kappa

**Purification:** Protein A + Protein G affinity chromatography

**Clone number:** F1

**Traits:** Liquid

**Concentration:** 1mg/mL

**UOM:** 100 $\mu$ L

**Cross Reactivity:** Porcine

**Applications:** IHC; ICC/IF

**[ IMMUNOGEN ]**

**Immunogen:** Recombinant PRL (Leu29~Cys227) expressed in *E.coli*

**Accession No.:** RPA846Hu01

**[ APPLICATIONS ]**

Immunohistochemistry: 5-20 $\mu$ g/mL;

Immunofluorescence: 5-30 $\mu$ g/mL;

Optimal working dilutions must be determined by end user.

**[ FORMULATION ]**

**Form & Buffer:** Supplied as solution form in 0.01M PBS, pH7.4, containing 0.05% Proclin-300, 50% glycerol.

**[ STORAGE AND STABILITY ]**

**Storage:** Avoid repeated freeze/thaw cycles.

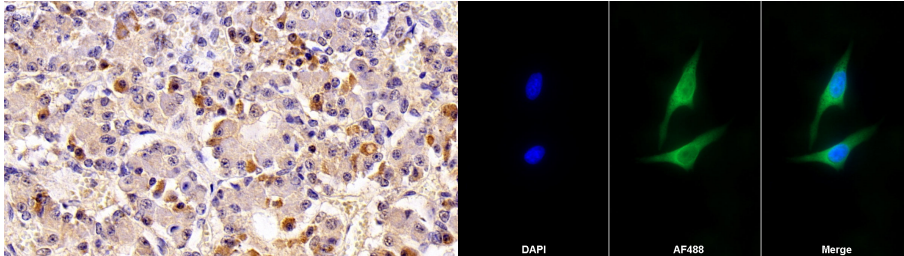
Store at 4°C for frequent use.

Aliquot and store at -20°C for 24 months.

**Stability Test:** The thermal stability is described by the loss rate. The loss rate was determined by accelerated thermal degradation test, that is, incubate the protein at 37°C for 48h, and no

obvious degradation and precipitation were observed. The loss rate is less than 5% within the expiration date under appropriate storage condition.

**[ IDENTIFICATION ]**



DAB staining on IHC-P; Sample:  
Porcine Pituitary Tissue; Primary Ab:  
20µg/ml Mouse Anti-Human PRL  
Antibody Second Ab: 2µg/mL HRP-  
Linked Caprine Anti-Mouse IgG  
Polyclonal Antibody (Catalog:  
SAA544Mu19)

AF488 staining on IF;  
Sample: HeLa cell  
Primary Ab: 30µg/ml Mouse Anti-  
Human PRL Antibody  
Second Ab: 2µg/ml AF488-Linked  
Caprine Anti-Mouse IgG Polyclonal  
Antibody  
(Catalog: SAA544Mu11)

**[ IMPORTANT NOTE ]**

The kit is designed for research use only, we will not be responsible for any issue if the kit was used in clinical diagnostic or any other procedures.